

SPECIFICATIONS

CONTACT RATING: AC 125V 6A, AC 250V 3A ,DC 28V 3A

MECHANICAL LIFE: 100,000 make-and-break cycles
DC 10V & 0.1mA.

CONTACT RESISTANCE: 10 mΩ max.

INSULATION RESISTANCE: 500V 500 MΩ min.

DIELECTRIC STRENGTH: 1,000 Vrms min. @sea level.

OPERATING TEMPERATURE: -40°C to 85°C.

MATERIALS

CASE: Diallyl phthalate (DAP) (UL94v-0).

ACTUATOR: Brass,chrome plated.

BUSHING: Brass,nickel plated.

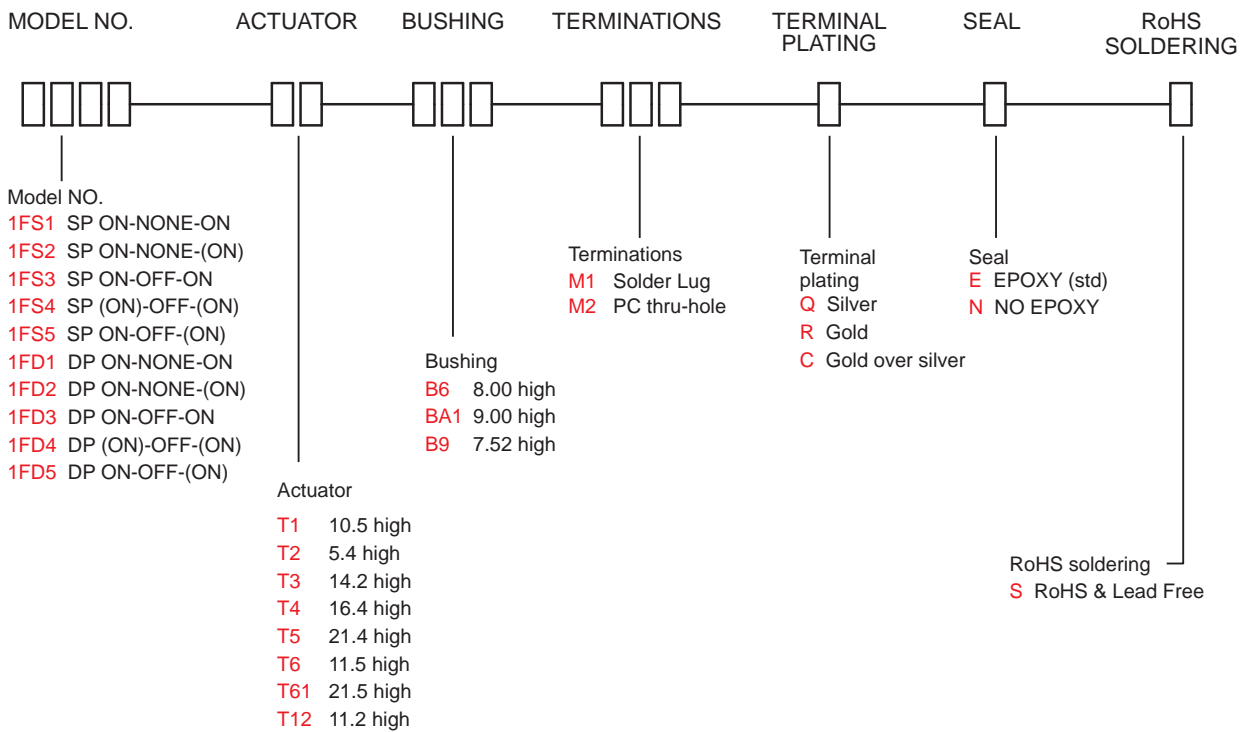
HOUSING: Stainless Steel.

SWITCH SUPPORT: Brass,tin plated.

TERMINAL/CONTACT: Brass,with silver or gold plated.(See Page 23)



HOW TO ORDER



1F Series

Miniature Toggle Switches

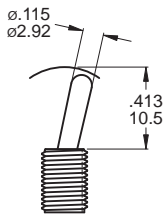
SWITCH FUNCTION

NO. POLES	MODEL NO.	SWITCH FUNCTION			CONNECTED TERMINALS / SCHEMATIC				
		POS.1	POS.2	POS.3	POS.1	POS.2	POS.3		
SP	1FS1	ON	NONE	ON	2-3	N/A	2-1		
	1FS2	ON	NONE	(ON)					
	1FS3	ON	OFF	ON					
	1FS4	(ON)	OFF	(ON)					
	1FS5	ON	OFF	(ON)					
DP	1FD1	ON	NONE	ON	2-3,5-6	N/A	2-1,5-4		
	1FD2	ON	NONE	(ON)					
	1FD3	ON	OFF	ON					
	1FD4	(ON)	OFF	(ON)					
	1FD5	ON	OFF	(ON)					

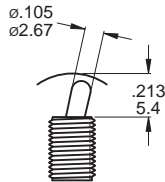
() = MOMENTARY

ACTUATOR OPTIONS

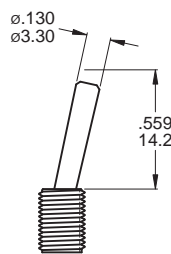
T1 STD



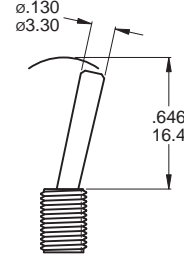
T2



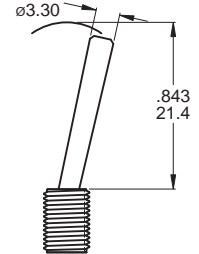
T3



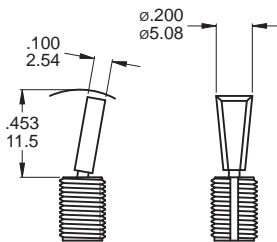
T4



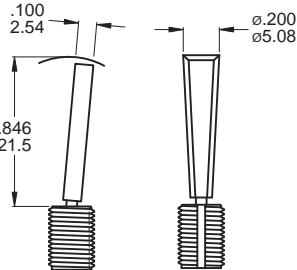
T5



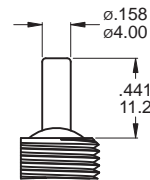
T6 FLATTED WITH ANTIROTATION



T6-1



T12

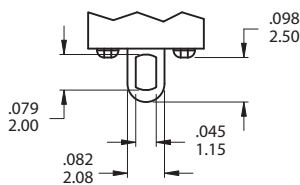


T12 use with BA1 bushing only
*T12 actuator mechanical life 200,000 cycles

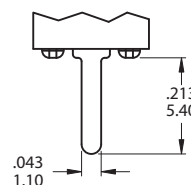
T6, T6-1 use with B6 bushing only

TERMINATION OPTIONS

M1 Solder lug

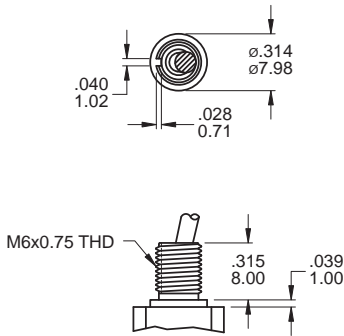


M2 PC Thru - hole

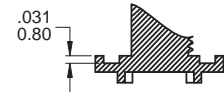
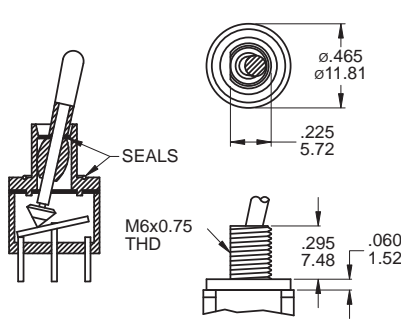


BUSHING OPTIONS

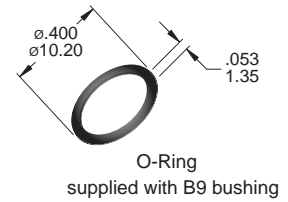
B6 HIGH TORQUE



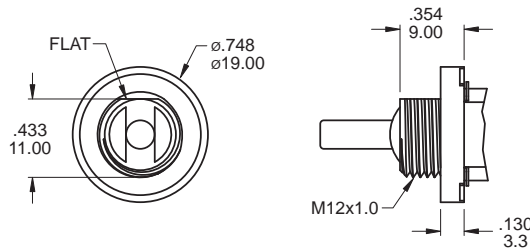
B9 SPLASH PROOF



CP-1TEB



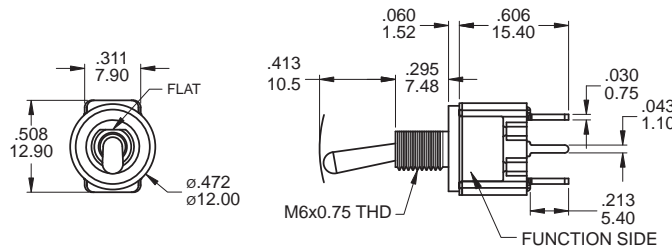
BA1 SPLASH PROOF



Use with T12 actuators only
BA1 Bear Strength from top of actuator
up to 10kg aside up to 15kg

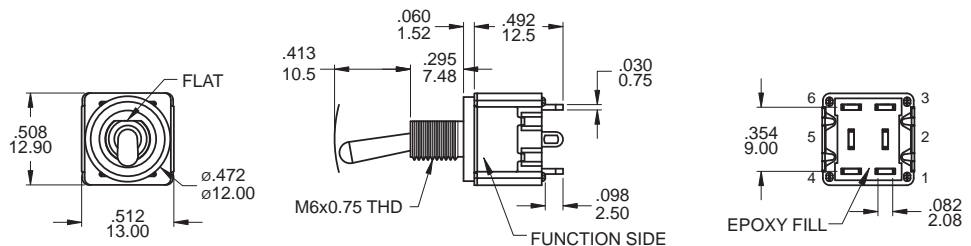
POLE OPTIONS

SPDT



Part No. Shown : 1FS1T1B9M2RES

DPDT



Part No. Shown : 1FD1T1B9M1QES

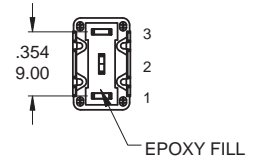
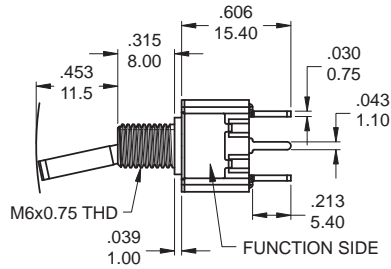
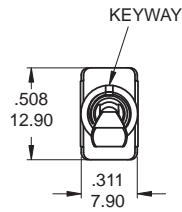


1F Series

Miniature Toggle Switches

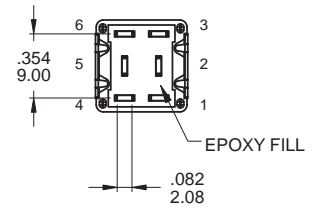
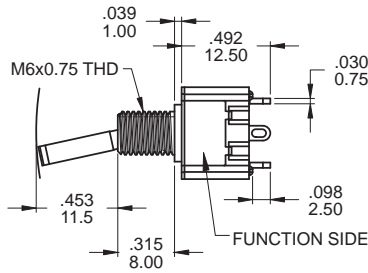
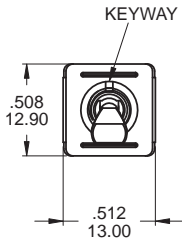
1F
Toggle Switches

SPDT



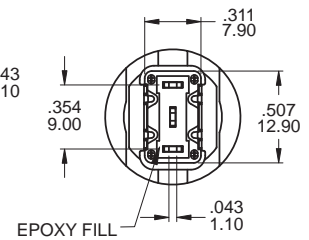
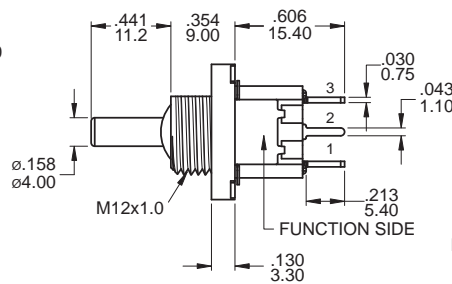
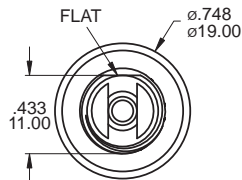
Part No. Shown : 1FS3T6B6M2QES

DPDT



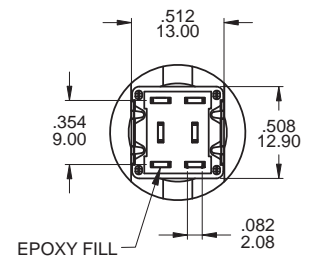
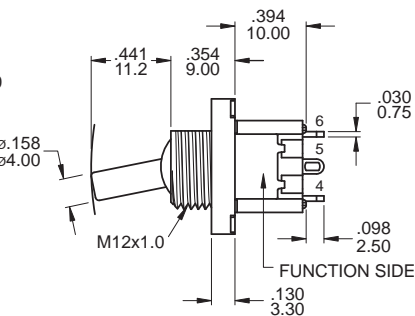
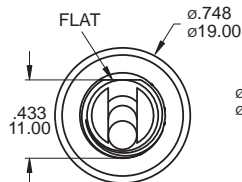
Part No. Shown : 1FD1T6B6M1QES

SPDT



Part No. Shown : 1FS3T12BA1M2QES

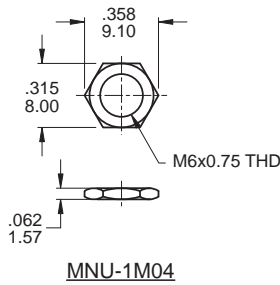
SPDT



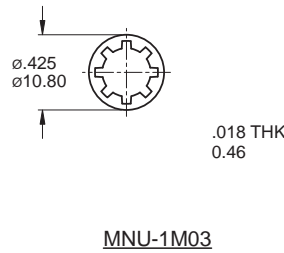
Part No. Shown : 1FD1T12BA1M1QES

HARDWARE

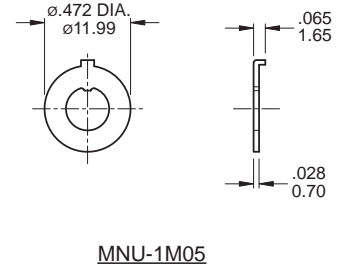
M6x0.75 NUT



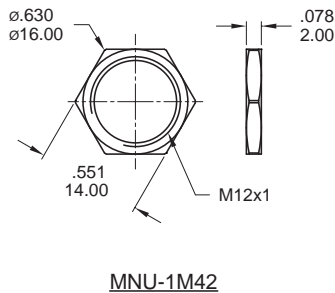
LOCKWASHER



LOCKING RING

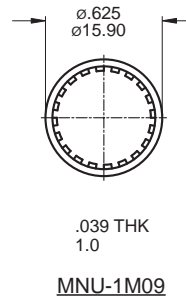


M12x1 NUT



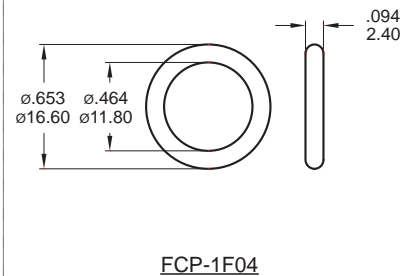
Supplied standard with BA1 bushing

LOCKWASHER



Supplied standard with BA1 bushing

O-RING



Supplied standard with BA1 bushing

CONTACT MATERIAL OPTIONS

	CONTACT PLATING	TERMINAL PLATING	RATINGS
Q	Silver	Silver	6 Amps with resistant load @ 125VAC
C	Gold over Silver	Gold over silver	3 Amps with resistant load @ 250VAC or 28VDC
R	Gold	Gold	0.4 Volt - Amps (VA) max. @ 20V max. (AC or DC)

SOLDERING PROCESSES

MANUAL SOLDERING : Use soldering iron of 30 watts, controlled at 350°C approximately 5 seconds while applying solder.

WAVE SOLDERING: Recommended Soldering Temperature: 270 ± 5°C

Duration of Solder Immersion: Max 5 sec. (PCB is 1.6mm in thickness)

1F
Toggle Switches