

SPECIFICATIONS

CONTACT RATING: Dependent upon contact material
see page 107.

MECHANICAL LIFE: 50,000 make-and-break cycles.

CONTACT RESISTANCE: 20mΩ max. initial @ 2-4VDC

100mA for both silver and gold plated contacts.

INSULATION RESISTANCE: 1,000MΩ min.

DIELECTRIC STRENGTH: 1,000 Vrms min. @sea level.

OPERATING TEMPERATURE: -30°C to 85°C.

MATERIALS

CASE: Diallyl phthalate(DAP) (UL94V-0).

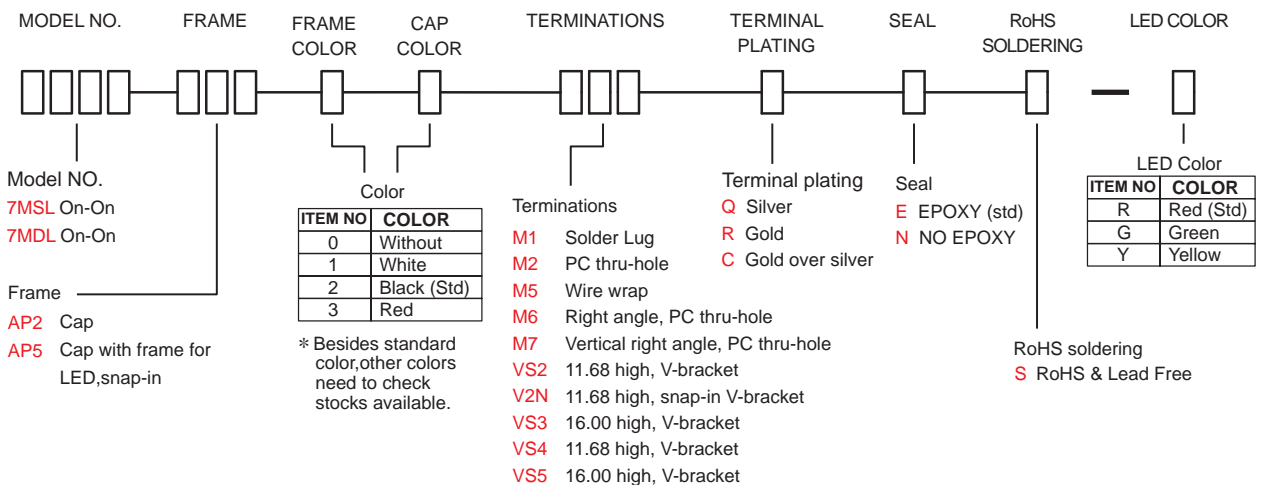
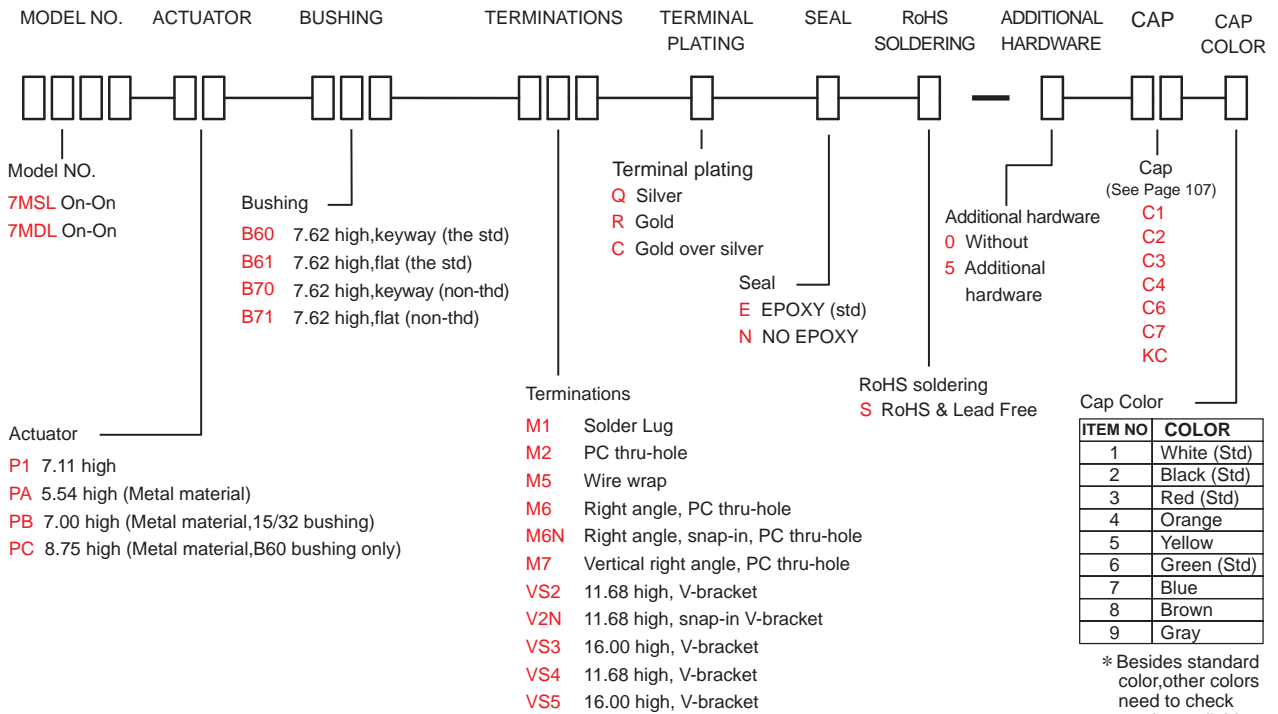
PLUNGER: Glass filled Nylon or Glass filled polyester.(PBT)

BUSHING: Brass,nickel plated.

HOUSING: Stainless Steel.

CONTACT: Copper alloy, gold over silver for plating
(See Page 107)

HOW TO ORDER



7M(LOCK) Pushbutton Switches

7M(LOCK) Series

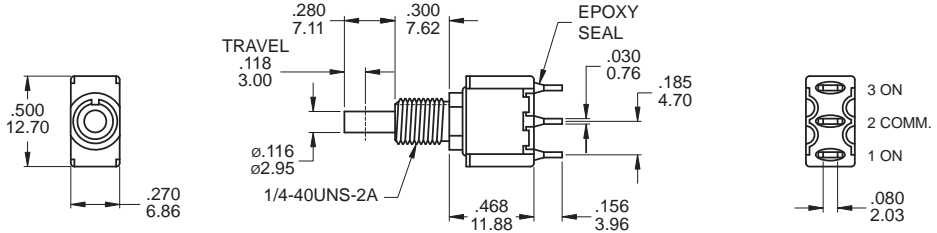
Snap-Acting Pushbutton Switches

SWITCH FUNCTION

NO. POLES	UL/CSA MODEL NO.	MODEL NO.	SWITCH FUNCTION		CONNECTED TERMINALS / SCHEMATIC	
			POS.1	POS.2	POS.1	POS.2
SP	Q27	7MSL	ON	ON	1-2 	2-3
DP	Q27	7MDL	ON	ON	1-2,4-5 	2-3,5-6

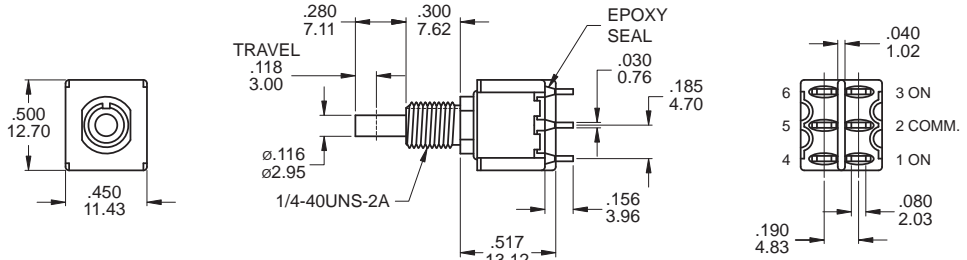
MOM=MOMENTARY

POLE OPTIONS



SPDT

Part No. Shown : 7MSLP1B60M1QE



DPDT

Part No. Shown : 7MDLP1B60M1QE

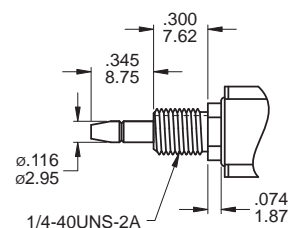
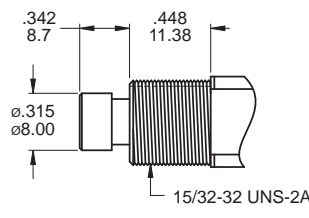
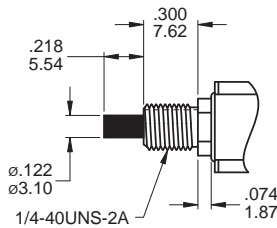
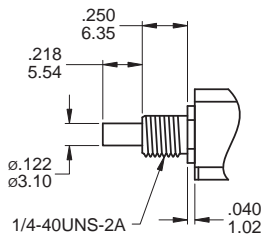
ACTUATOR OPTIONS

P1

PAB60 handle, metal material

PBB13 handle, metal material

PCB60 handle, metal material



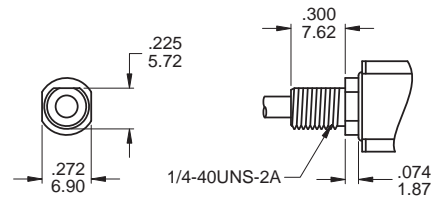
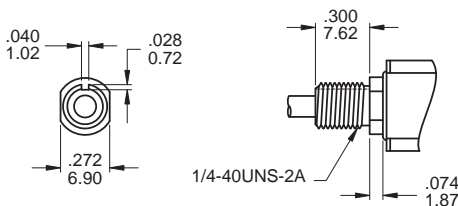
Use with B13 bushing only

Use with B60 bushing std
* PC Actuator only for KC Cap

BUSHING OPTIONS

B60 THD STD
B70 NON-THD

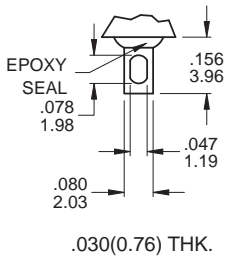
B61 THD STD
B71 NON-THD



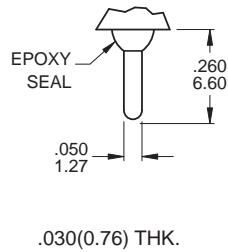
7M(LOCK) Pushbutton Switches

TERMINATION OPTIONS

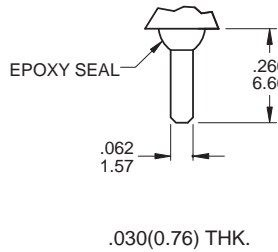
M1 Solder lug



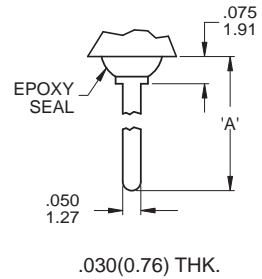
M2 PC Thru-hole



M3 Quick connect



M5 Wire Wrap



OTHER TERMINATION OPTIONS

M6 Right angle P.C. Mount

M7 Right angle P.C. Mount

VS2 Vertical bracket P.C. Mount

VS3 Vertical bracket P.C. Mount

M6N Right angle P.C. Mount

Snap-in bracket

V2N Vertical bracket P.C. Mount

Snap-in bracket

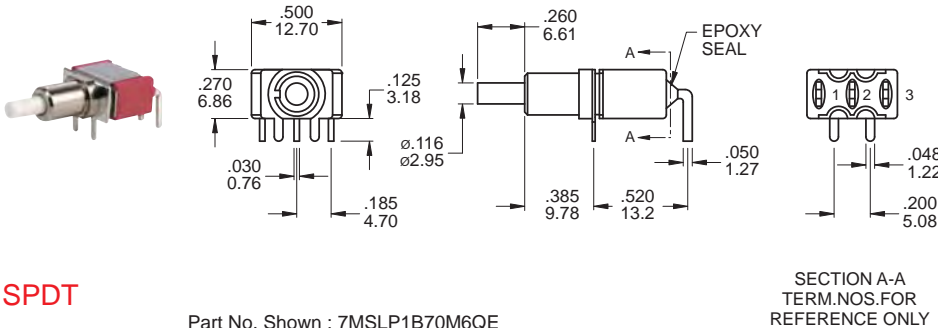
OPTION CODE	DIM. 'A'
M51	.750 (19.50)
M52	.964 (24.48)
M53	.426 (10.80)
M54	.650 (16.50)



7M(LOCK) Pushbutton Switches

TERMINATION OPTIONS

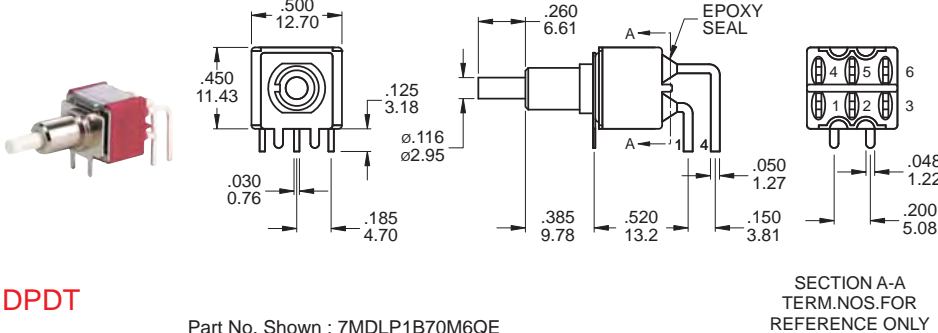
M6



Part No. Shown : 7MSLP1B70M6QE

SPDT

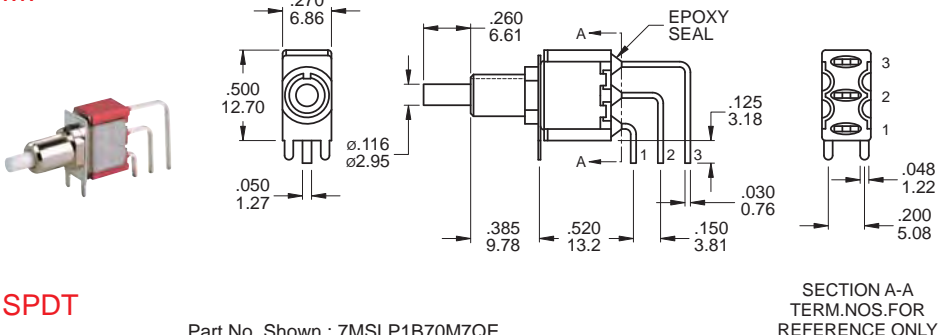
M6



Part No. Shown : 7MDLP1B70M6QE

DPDT

M7



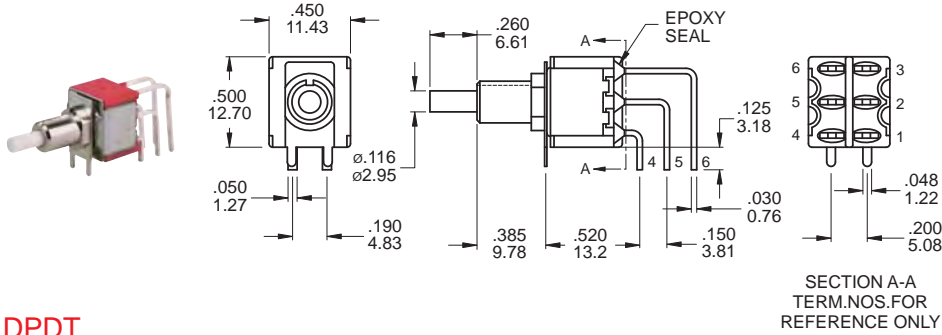
Part No. Shown : 7MSLP1B70M7QE

SPDT

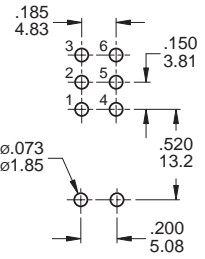
7M(LOCK) Series

Snap-Acting Pushbutton Switches

M7



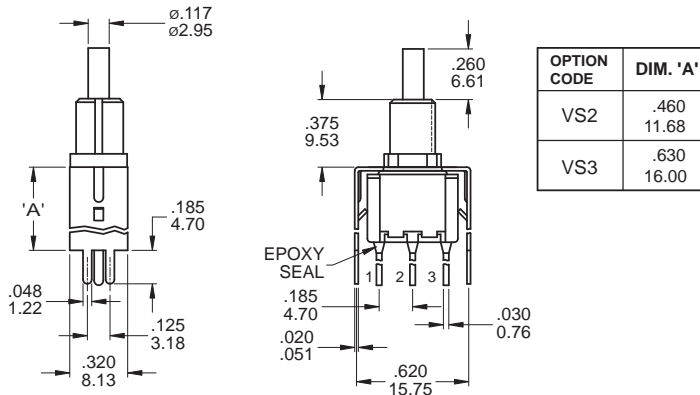
P.C. MOUNTING



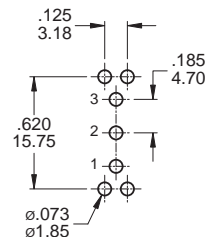
DPDT

Part No. Shown : 7MDLP1B70M7QE

VS2 - VS3



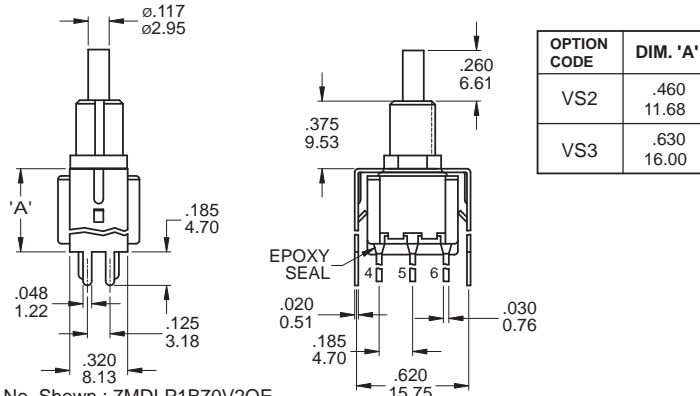
P.C. MOUNTING



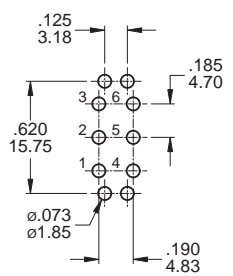
SPDT

Part No. Shown : 7MSLP1B70V2QE

VS2 - VS3



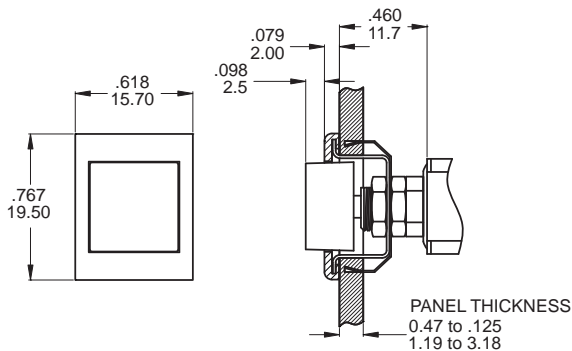
P.C. MOUNTING



DPDT

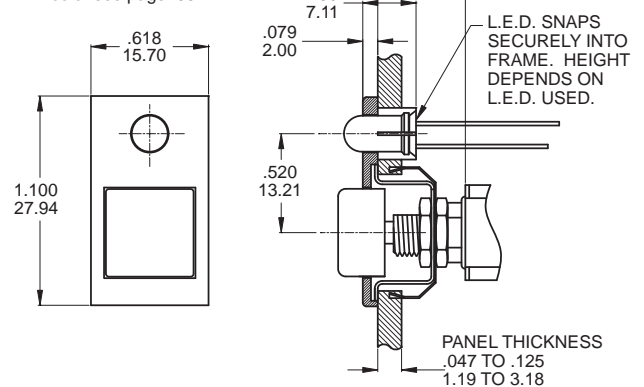
Part No. Shown : 7MDLP1B70V2QE

AP2 CAP & FRAME



AP5 CAP & FRAME

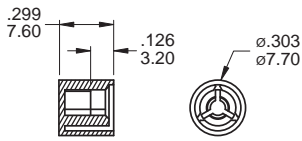
LED color see page 103



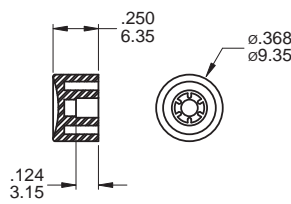
CAP OPTIONS

For 7M,7A Series Only, Cap Standard Clors: White, Black, Green, Red

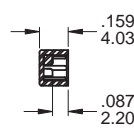
C1



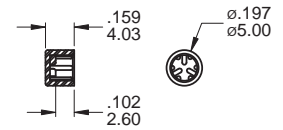
C2



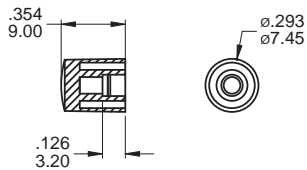
C3



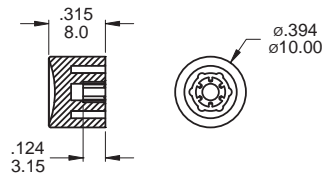
C4



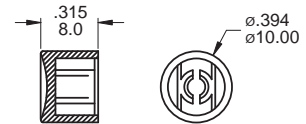
C6



C7

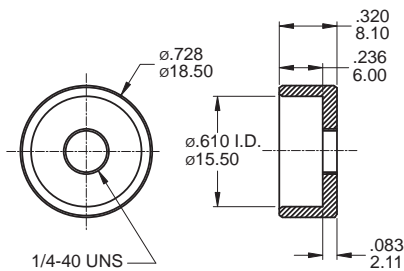


KC for PC actuator only



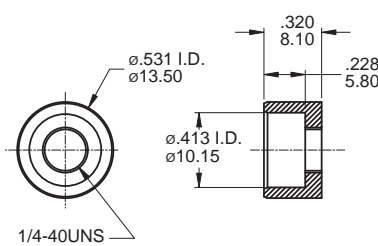
DRESS NUTS

HDW21



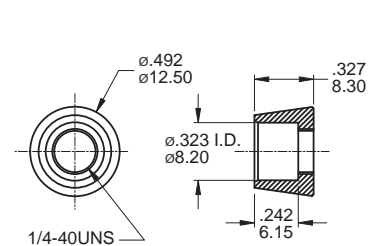
MNU-1M19

HDW22 for C2 Cap



MNU-1M20

HDW23 for C1 Cap



MNU-1M21

CONTACT MATERIAL OPTIONS

	CONTACT PLATING	TERMINAL PLATING	RATINGS
Q	Silver * 7MSL/7MDL with gold over silver for plating	Q = Silver	3 Amps with resistant load @ 120VAC or 28VDC 1 Amps with resistant load @ 250VAC
C	Gold over Silver	C = Gold over silver	
R	Gold	R = Gold	0.4 Volt - Amps (VA) max. @ 20V max. (AC or DC)

SOLDERING PROCESSES

MANUAL SOLDERING: Use soldering iron of 30 watts, controlled at 350°C approximately 5 seconds while applying solder.

WAVE SOLDERING: Recommended Soldering Temperature: 270 ± 5°C

Duration of Solder Immersion: Max 5 sec. (PCB is 1.6mm in thickness)



7M(LOCK)
Pushbutton Switches