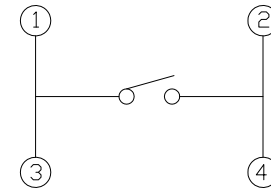
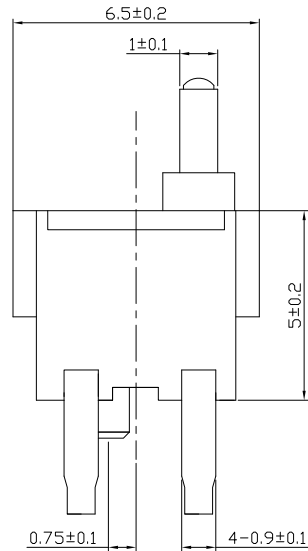
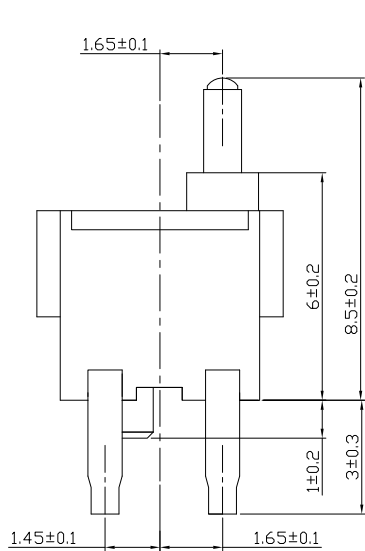
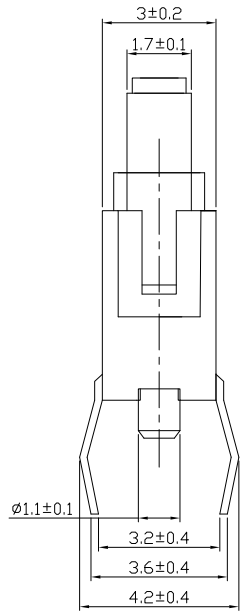




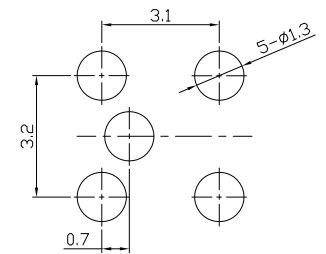
RoHS Compliant  
2002/95/EC

REV.	ECN. NO.	APPD.

DIMENSIONS



CIRCUIT DIAGRAM



P.C.B. LAYOUT

ELECTRO-MECHANICAL CHARACTERISTICS

Refer to additional specifications

Rating	DC 12V 50mA
Circuit	1C-1P
Contact Resistance	150mΩ Max.
Travel	2.4±0.2mm
Operating Force	45±15gf
Operating Life(cycles)	50,000

NO.	PARTS	MATERIAL	Q'TY	FINISHING
7				
6				
5	CONTACT SPING	PBS WIRE	1	Ag PLATED
4	TERMINAL	BRASS	4	Ag PLATED
3	CASE	PPA	1	BLACK
2	COVER	PPA	1	BLACK
1	KNOB	PPA	1	BLACK

GENERAL TOLERANCE	UNITS mm
WITHIN 1.5mm±0.1mm	MAT'L
OVER 1.5mm±0.2mm	SEE NOTE
	FINISH
	SEE NOTE
	Q'TY

SEE NOTE
SEE NOTE
SEE NOTE

雅安科技有限公司 ACCURATE INNOTECH INC.			
TITLE:	PART NO.:		
DETECTOR SWITCH	AD-1120		
DR: Ricky 2020/05/08	DWG NO.:		
CHKD: Ricky 2020/05/08	AZJ-1120		
APPD:	SCALE	SHEET	REV.
	6:1	1/1	A
			CUSTOMER DRAWING

THESE DRAWINGS AND SPECIFICATIONS ARE THE PROPERTY OF ACCURATE INNOTECH INC AND SHALL NOT BE REPRODUCED, COPIED OR USED IN ANY MANNER WITHOUT THE PRIOR WRITTEN CONSENT OF ACCURATE INNOTECH INC.