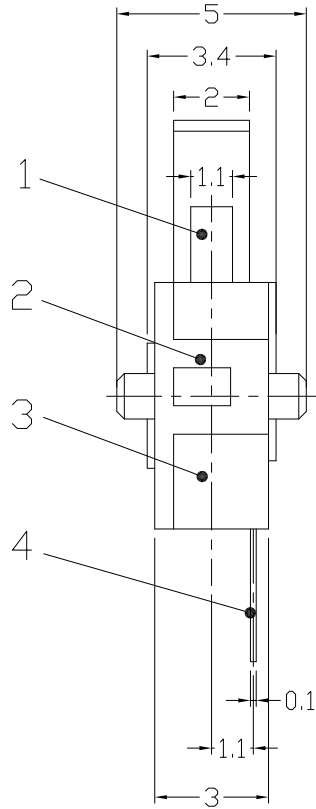
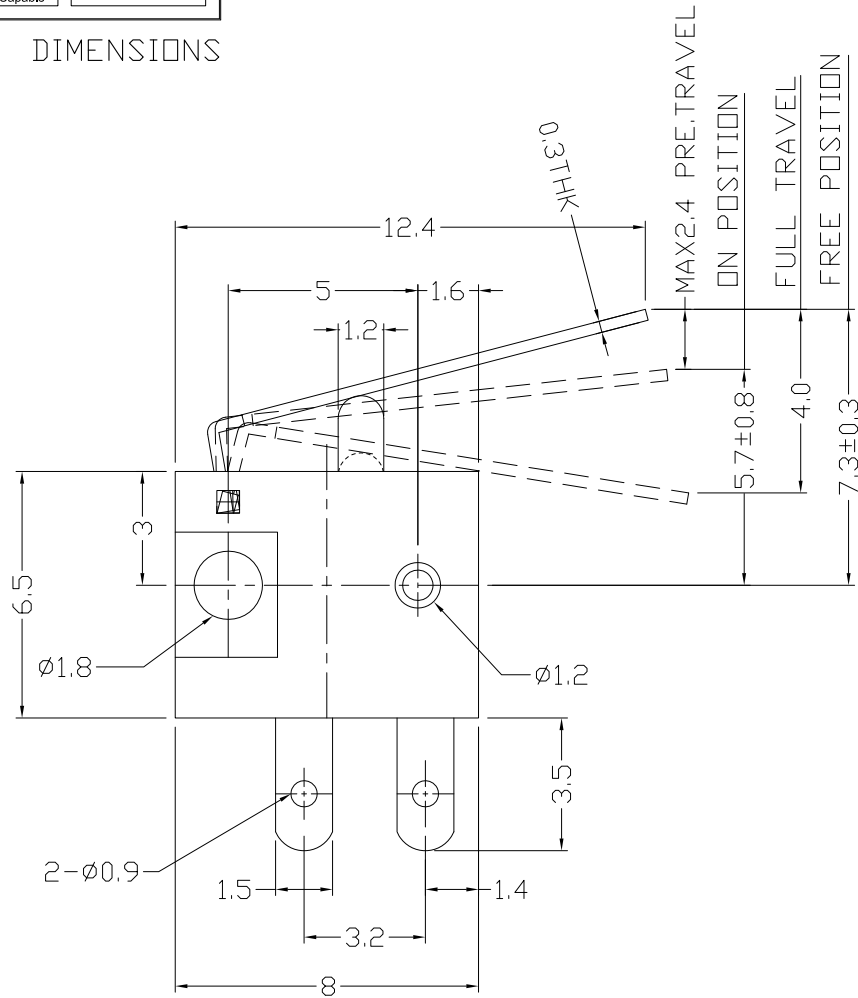




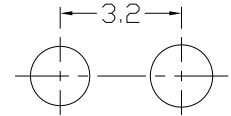
RoHS Compliant
2002/95/EC

REV.	ECN.	NO.	APPD.

DIMENSIONS



CIRCUIT DIAGRAM



P.C.B. LAYOUT

ELECTRO-MECHANICAL CHARACTERISTICS

Refer to additional specifications

Rating	DC 30V 0.1A
Circuit	1P-1T
Contact Resistance	50mΩ Max.
Operating Force	40±20gf
Operating Life(cycles)	100,000

7				
6	COPPER KNOB	PBS	1	NATURAL
5	SPRING	STEEL WIRE	1	NI PLATED
4	TERMINAL	PBS	2	Ag PLATED
3	CASE	PA	1	BLACK
2	COVER	POM/PA	1	BLACK
1	KNOB	POM	1	BLACK
NO.	PARTS	MATERIAL	Q'TY	FINISHING

GENERAL TOLERANCE	UNITS mm
WITHIN 1.5mm±0.1mm	MAT'L
OVER 1.5mm±0.2mm	SEE NOTE
	FINISH
	SEE NOTE
	Q'TY

THESE DRAWINGS AND SPECIFICATIONS ARE THE PROPERTY OF ACCURATE INNOTECH INC AND SHALL NOT BE REPRODUCED, COPIED OR USED IN ANY MANNER WITHOUT THE PRIOR WRITTEN CONSENT OF ACCURATE INNOTECH INC.

雅安科技有限公司 ACCURATE INNOTECH INC.			
TITLE: MICRO SWITCH		PART NO.: AM-1201	
DR: <i>Ricky</i> 2020/05/11		DWG NO.: AZJ-1201	
CHKD: <i>Ricky</i> 2020/05/11		SCALE	SHEET
APPD:		5:1	1/1
		REV.	CUSTOMER DRAWING
		A	