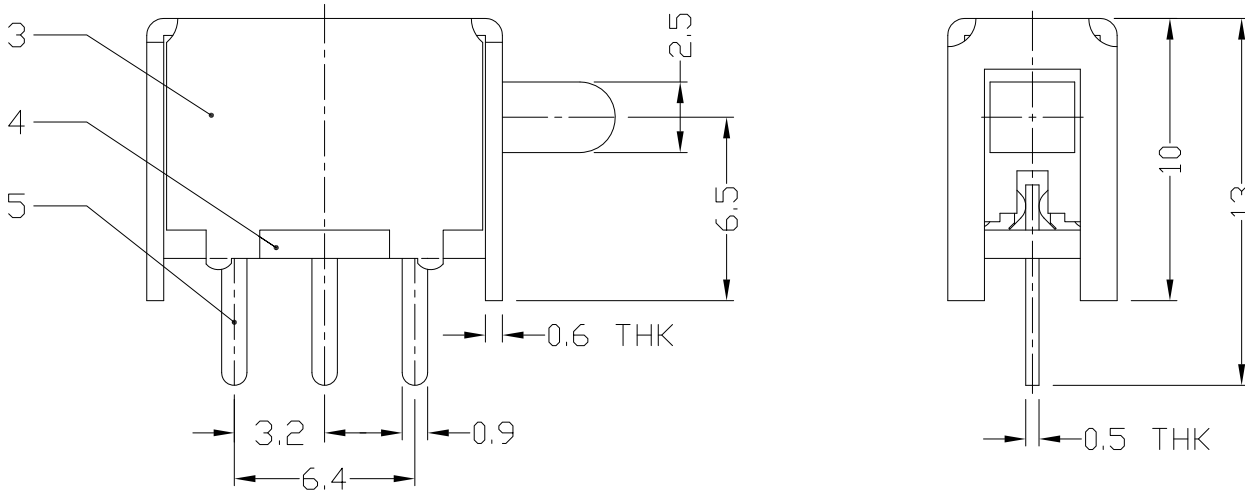
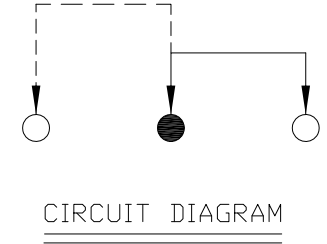
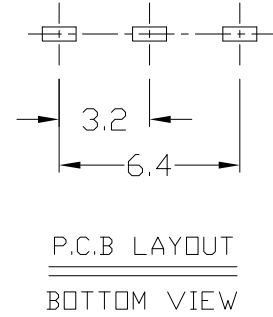
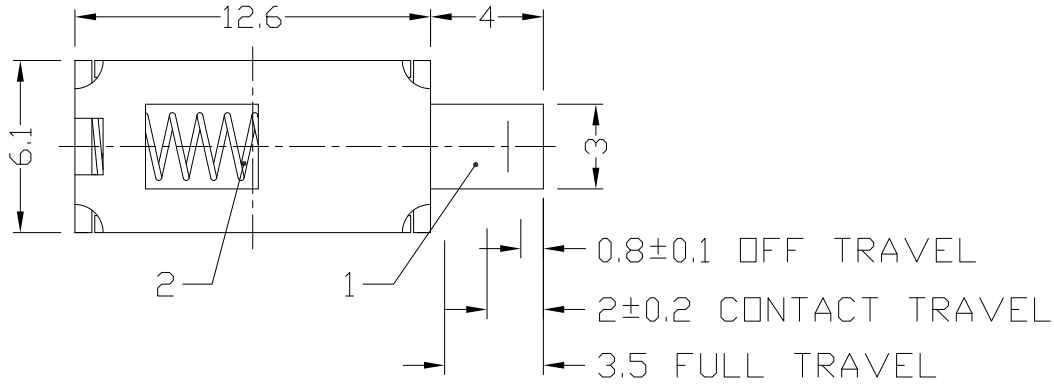




RoHS  
Compliant  
2002/95/EC

REV.	ECN.	NO.	APPD.

DIMENSIONS



ELECTRO-MECHANICAL CHARACTERISTICS  
Refer to additional specifications

RATING	DC50V 0.3A
CIRCUIT	1P2T
CONTACT RESISTANCE	100mΩ MAX.
TIMING	NON-SHORTING
OPERATING MODE	NON-LOCK
STROKE	OFF $0.8 \pm 0.1$ FULL 3.5mm CONTACT $2 \pm 0.2$
OPERATING FORCE	70±20gf
OPERATING LIFE(cycles)	10,000

8					WITHIN 1.5mm:±0.1mm	UNITS mm
7					OVER 1.5mm:±0.2mm	MAT'L
6	CONTACT CLIP	PBS STRIP	1	Ag PLATED		SEE NOTE
5	TERMINAL	BRASS STRIP	3	Ag PLATED		SEE NOTE
4	BASE	PHENDLIC RESIN	1	NATURAL		FINISH
3	FRAME	STEEL STRIP	1	Ni PLATED		SEE NOTE
2	SPRING	STEEL WIRE	1	NATURAL		Q'TY
1	KNOB	PDM	1	BLACK		
NO.	PARTS	MATERIAL	Q'TY	FINISHING		

THESE DRAWINGS AND SPECIFICATIONS ARE THE PROPERTY OF ACCURATE INNOTECH INC AND SHALL NOT BE REPRODUCED, COPIED OR USED IN ANY MANNER WITHOUT THE PRIOR WRITTEN CONSENT OF ACCURATE INNOTECH INC.

**雅安科技有限公司**  
**ACCURATE INNOTECH INC.**

TITLE: PUSH SWITCH / HORIZONTAL	PART NO.: AP-12F03N
DR: <i>Ricky</i> 2015/03/30	DWG NO.: ADL-12F03
CHKD: <i>Ricky</i> 2015/03/30	SCALE SHEET REV. CUSTOMER 3:1 1/1 A DRAWING
APPD:	