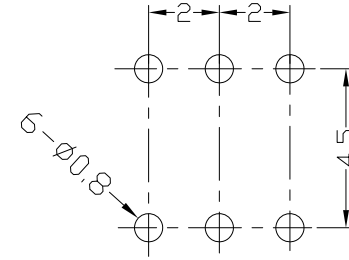
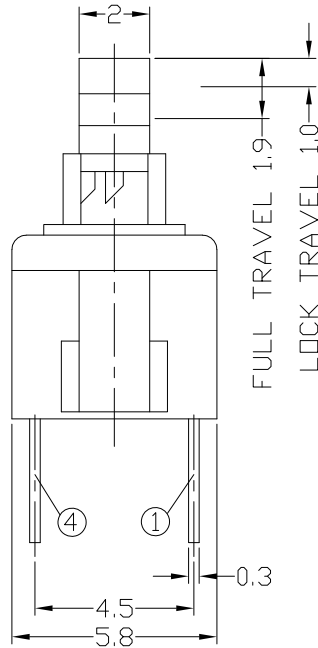
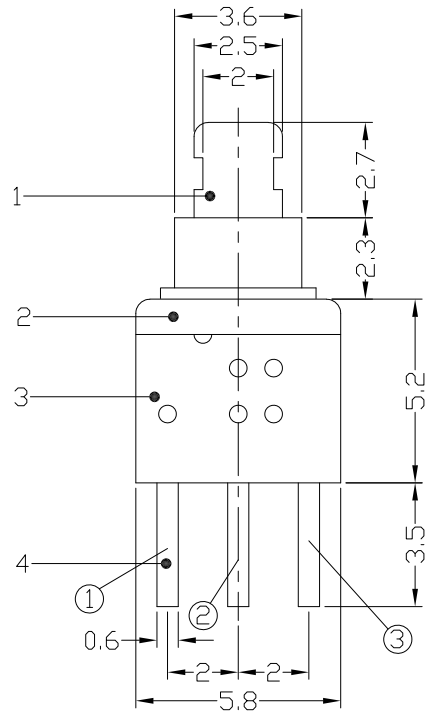




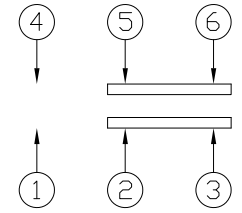
RoHS Compliant
2002/95/EC

REV.	ECN. NO.	NO.	APPD.

DIMENSIONS



P.C.B LAYOUT
TOP VIEW



CIRCUIT DIAGRAM

ELECTRO-MECHANICAL CHARACTERISTICS

Refer to additional specifications

RATING	DC12V 0.1A	
CIRCUIT	2P2T	
CONTACT RESISTANCE	70mΩ MAX.	
TIMING	NON-SHORTING	
OPERATING MODE	SELF-LOCK	AP-2216AL
	NON-LOCK	AP-2216AN
STROKE	FULL 1.9mm	LOCK 1.0mm
OPERATING FORCE	180±60gf	250±100gf
OPERATING LIFE(cycles)	10,000	

NO	PARTS	MATERIAL	QTY	FINISHING
7	CONTACT	PBS	1	Ag CLAD
6	SPING	SUS WIRE	1	NATURAL
5	LOCK PIN	SUS WIRE	1	NATURAL
4	TERMINAL	BRASS STRIP	1	Ag PLATED OVER Ni PLATED
3	CASE	PA6T	1	GREY
2	COVER	PA6T	1	BLACK
1	KNOB	PA6T	1	WHITE

WITHIN 1.5mm: ±0.1mm	UNITS mm
OVER 1.5mm: ±0.2mm	MAT'L SEE NOTE
	FINISH SEE NOTE
	Q'TY

雅安科技有限公司 ACCURATE INNOTECH INC.			
TITLE: PUSH SWITCH / VERTICAL	PART NO.: AP-2216AL & AP-2216AN		
DR: <i>Ricky</i> 2023/03/08	DWG NO.: AZJ-2216A		
CHKD: <i>Ricky</i> 2023/03/08	SCALE 6:1	SHEET 1/1	REV. A
APPD:	CUSTOMER DRAWING		

THESE DRAWINGS AND SPECIFICATIONS ARE THE PROPERTY OF ACCURATE INNOTECH INC AND SHALL NOT BE REPRODUCED, COPIED OR USED IN ANY MANNER WITHOUT THE PRIOR WRITTEN CONSENT OF ACCURATE INNOTECH INC.