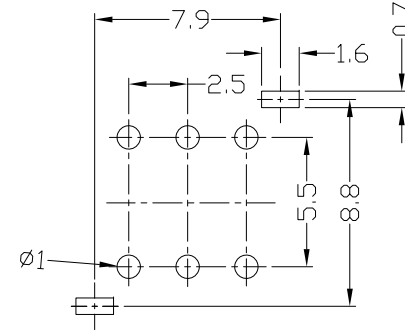
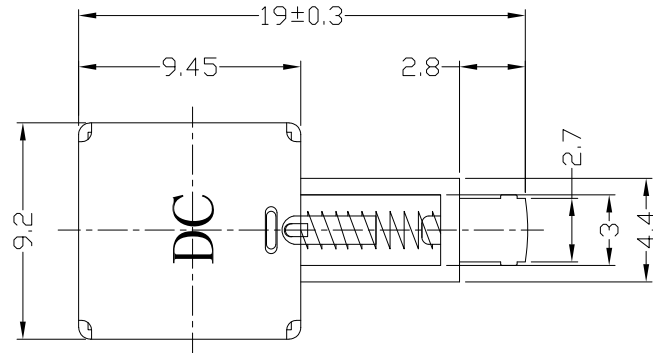




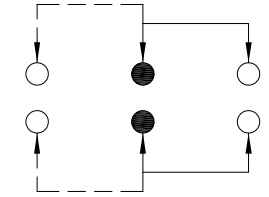
RoHS Compliant  
2002/95/EC

REV.	ECN. NO.	APPD.

DIMENSIONS



P.C.B LAYOUT

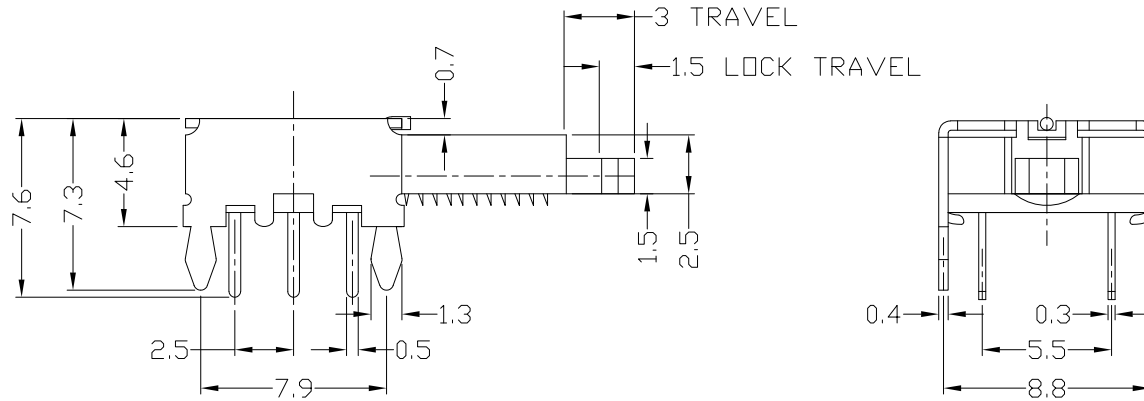


CIRCUIT DIAGRAM

ELECTRO-MECHANICAL CHARACTERISTICS

Refer to additional specifications

RATING	DC50V 0.3A	
CIRCUIT	2P2T	
CONTACT RESISTANCE	100mΩ MAX.	
TIMING	NON-SHORTING	
OPERATING MODE	SELF-LOCK	AP-22E02L
	NON-LOCK	AP-22E03N
STROKE	FULL 3.0mm	LOCK 1.5mm
OPERATING FORCE	250±100gf	
OPERATING LIFE(cycles)	10,000	



NO.	PARTS	MATERIAL	Q'TY	FINISHING
8	CLIP	PBS	2	Ag PLATED
7	SPRING PLATE	PBS	1	NATURAL
6	CAM STICK	PBS WIRE	1	NATURAL
5	SPRING	SUS WIRE	1	NATURAL
4	TERMINAL	BRASS	6	Ag PLATED
3	TERMINAL CASE	PHENOLIC RESIN	1	NATURAL
2	COVER	MILD STEEL	1	Ni PLATED
1	KNOB	POM/PBT	1	YELLOW

WITHIN 1.5mm: ±0.1mm	UNITS mm
OVER 1.5mm: ±0.2mm	MAT'L SEE NOTE
	FINISH SEE NOTE
	Q'TY

THESE DRAWINGS AND SPECIFICATIONS ARE THE PROPERTY OF ACCURATE INNOTECH INC AND SHALL NOT BE REPRODUCED, COPIED OR USED IN ANY MANNER WITHOUT THE PRIOR WRITTEN CONSENT OF ACCURATE INNOTECH INC.

雅安科技有限公司 ACCURATE INNOTECH INC.			
TITLE: PUSH SWITCH / HORIZONTAL		PART NO.: AP-22E02L & AP-22E03N	
DR: <i>Ricky</i> 2017/05/12		DWG NO.: AZJ-22E0203	
CHKD: <i>Ricky</i> 2017/05/12		SCALE	SHEET
APPD:		1/1	REV. A
		CUSTOMER DRAWING	