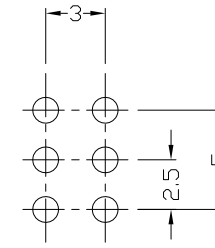
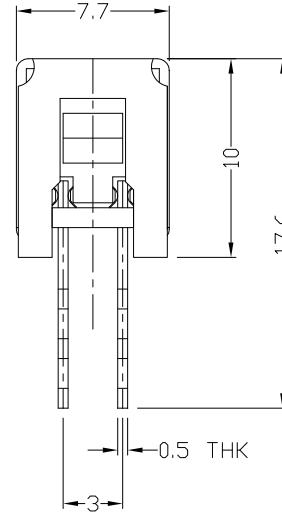
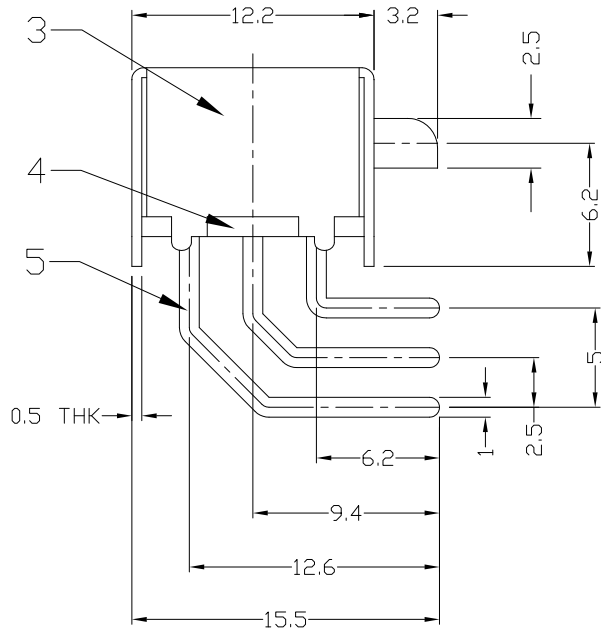
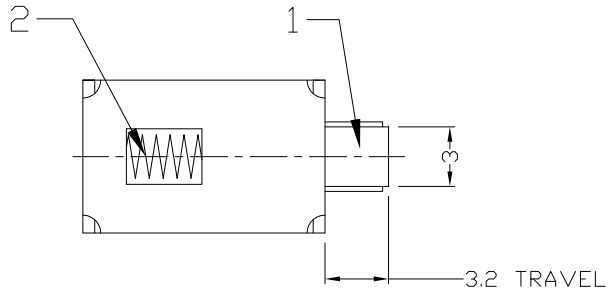




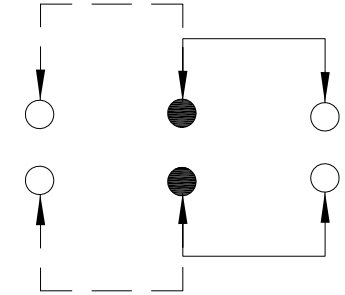
RoHS Compliant  
2002/95/EC

REV.	ECN. NO.	APPD.

DIMENSIONS



P.C.B LAYOUT  
BOTTOM VIEW



CIRCUIT DIAGRAM

ELECTRO-MECHANICAL CHARACTERISTICS  
Refer to additional specifications

RATING	DC50V 0.3A
CIRCUIT	2P2T
CONTACT RESISTANCE	100mΩ MAX.
TIMING	NON-SHORTING
OPERATING MODE	NON-LOCK
STROKE	FULL 3.2mm
OPERATING FORCE	70±20gf
OPERATING LIFE(cycles)	10,000

NO.	PARTS	MATERIAL	Q'TY	FINISHING
8				
7				
6	CONTACT CLIP	PBS STRIP	2	Ag CLAD
5	TERMINAL	BRASS STRIP	6	Ag PLATED
4	BASE	PHENDLIC RESIN	1	NATURAL
3	FRAME	STEEL STRIP	1	Ni PLATED
2	SPRING	STEEL WIRE	1	NATURAL
1	KNOB	POM	1	BLACK

WITHIN 1.5mm±0.1mm  
OVER 1.5mm±0.2mm

THESE DRAWINGS AND SPECIFICATIONS ARE THE PROPERTY OF ACCURATE INNOTECH INC AND SHALL NOT BE REPRODUCED, COPIED OR USED IN ANY MANNER WITHOUT THE PRIOR WRITTEN CONSENT OF ACCURATE INNOTECH INC.

UNITS	MAT'L	FINISH	Q'TY
mm	SEE NOTE	SEE NOTE	

**雅安科技有限公司**  
**ACCURATE INNOTECH INC.**

TITLE: PUSH SWITCH / HORIZONTAL	PART NO.: AP-22F92N
DR: <i>Ricky</i> 2015/04/02	DWG NO.: ADL-22F92
CHKD: <i>Ricky</i> 2015/04/02	
APPD:	

SCALE	SHEET	REV.	CUSTOMER DRAWING
2:1	1/1	A	