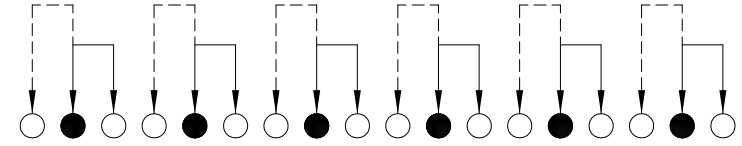
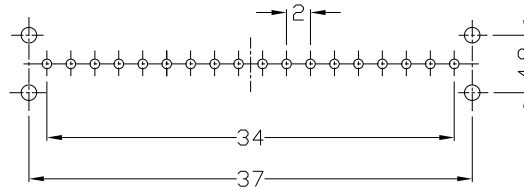




RoHS
Compliant
2002/95/EC

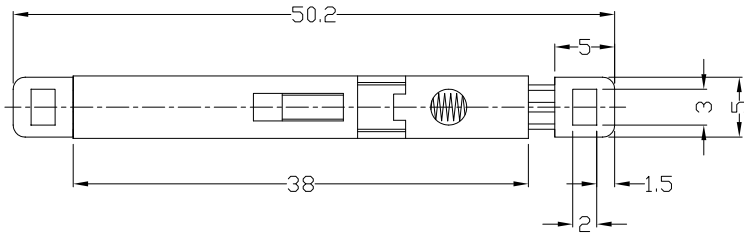
REV.	ECN.	NO.	APPD.

DIMENSIONS



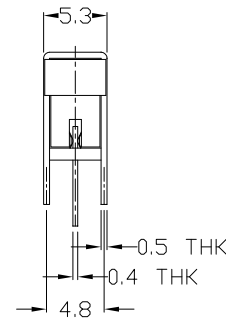
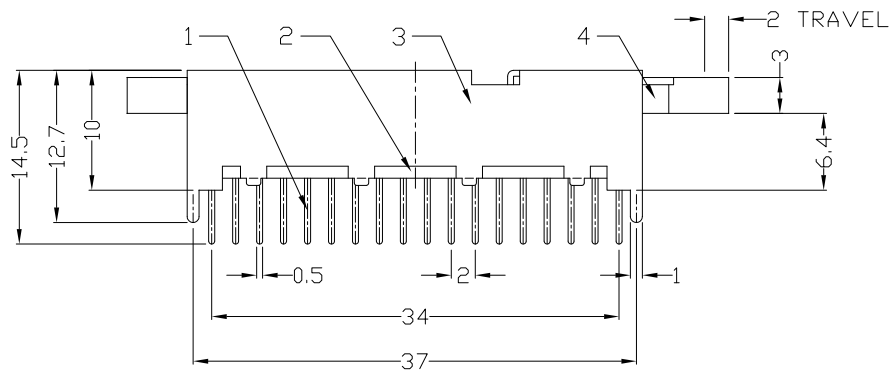
P.C.B LAYOUT
BOTTOM VIEW

CIRCUIT DIAGRAM



ELECTRO-MECHANICAL CHARACTERISTICS
Refer to additional specifications

RATING	DC50V 0.3A
CIRCUIT	6P2T
CONTACT RESISTANCE	100mΩ MAX.
TIMING	NON-SHORTING
OPERATING MODE	NON-LOCK
STROKE	FULL 2mm
OPERATING FORCE	300±100gf
OPERATING LIFE(cycles)	10,000



NO.	PARTS	MATERIAL	Q'TY	FINISHING
8				
7				WITHIN 1.5mm:±0.1mm
6	SPRING	STEEL WIRE	1	NATURAL
5	CONTACT CLIP	PBS STRIP	6	Ag PLATED
4	KNOB	ABS	1	BLACK
3	FRAME	STEEL STRIP	1	Ni PLATED
2	BASE	PHENOLIC RESIN	1	NATURAL
1	TERMINAL	BRASS STRIP	18	Ag PLATED

UNITS	mm
MAT'L	SEE NOTE
FINISH	SEE NOTE
Q'TY	
<small>THESE DRAWINGS AND SPECIFICATIONS ARE THE PROPERTY OF ACCURATE INNOTECH INC AND SHALL NOT BE REPRODUCED, COPIED OR USED IN ANY MANNER WITHOUT THE PRIOR WRITTEN CONSENT OF ACCURATE INNOTECH INC.</small>	

雅安科技有限公司 ACCURATE INNOTECH INC.			
TITLE: PUSH SWITCH / HORIZONTAL		PART NO.: AP-62D01N	
DR: <i>Ricky</i> 2015/04/08		DWG NO.: ADL-62D01	
CHKD: <i>Ricky</i> 2015/04/08		SCALE	SHEET
APPD:		3:2	1/1
		REV.	CUSTOMER DRAWING
		A	