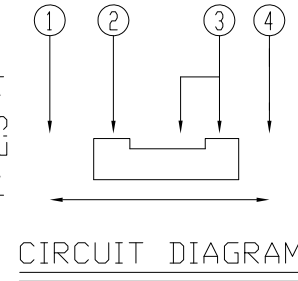
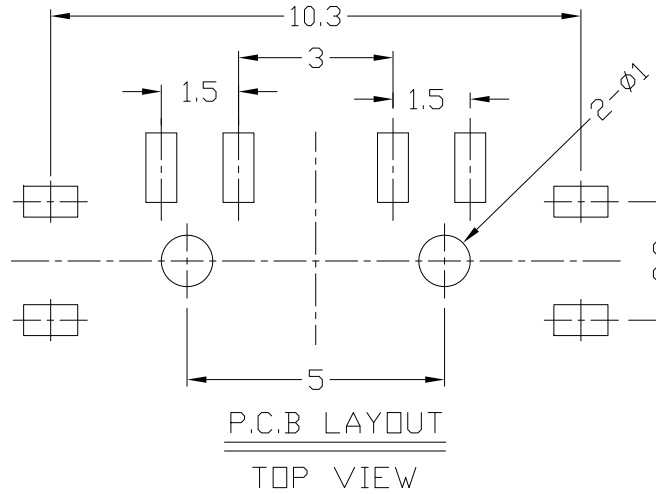
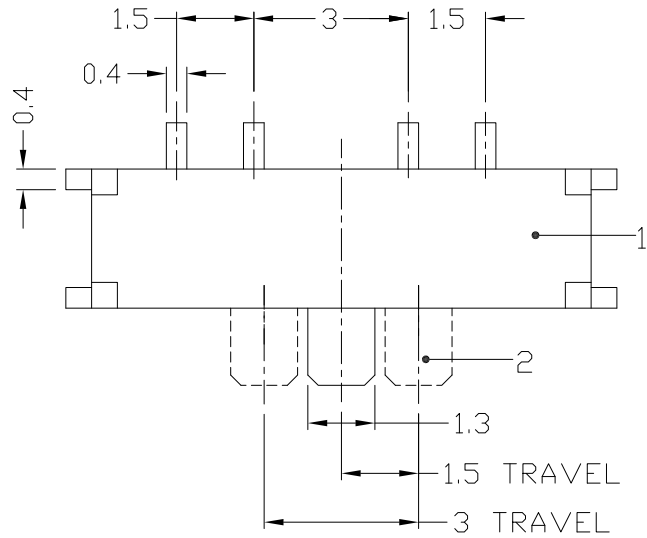




RoHS Compliant
2002/95/EC

REV.	ECN. NO.	APPD.

DIMENSIONS



MODEL CODE

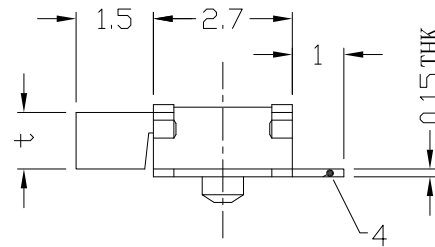
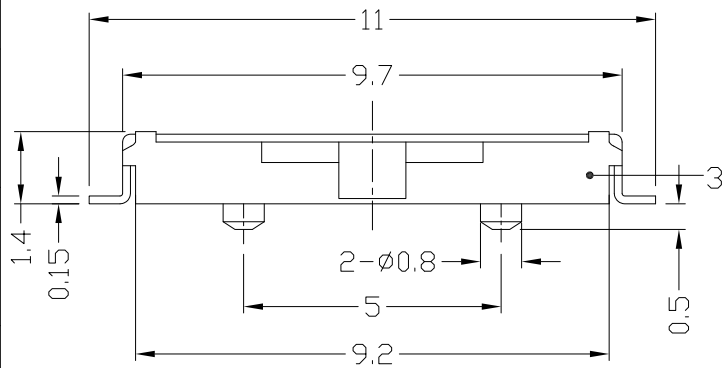
AS-1300 **A**P-**B**

t (mm)
A 1.1
B 0.4

Knob Color	
B	Black
W	White
BL	Blue

ELECTRO-MECHANICAL CHARACTERISTICS
Refer to additional specifications

RATING	DC6V 0.3A
CIRCUIT	1P3T
TIMING	NON-SHORTING
CONTACT RESISTANCE	100mΩ MAX.
TRAVEL	1.5mm
OPERATING FORCE	200±100gf
OPERATING LIFE(cycles)	10,000



NO.	PARTS	MATERIAL	Q'TY	FINISHING
8				
7				
6	SPRING PLATE	SUS	1	WASHING
5	CONTACT	PBS STRIP	1	Ag CLOD
4	TERMINAL	BRASS STRIP	1	Ag PLATED
3	COVER	SUS/PBS	1	Ag PLATED
2	CASE	LCP	1	BLACK
1	KNOB	PA46	1	BLACK

WITHIN 1.5mm±0.1mm
OVER 1.5mm±0.2mm

THESE DRAWINGS AND SPECIFICATIONS ARE THE PROPERTY OF ACCURATE INNOTECH INC AND SHALL NOT BE REPRODUCED, COPIED OR USED IN ANY MANNER WITHOUT THE PRIOR WRITTEN CONSENT OF ACCURATE INNOTECH INC.

UNITS	mm
MAT'L	SEE NOTE
FINISH	SEE NOTE
Q'TY	

雅安科技有限公司
ACCURATE INNOTECH INC.

TITLE:	MINI SLIDE SWITCH / HORIZONTAL	PART NO.:	AS-1300AP SERIES
DR:	Ricky 2016/12/22	DWG NO.:	AZJ-1300AP
CHKD:	Ricky 2016/12/22	SCALE	1:1
APPD:		SHEET	1/1
		REV.	A
		CUSTOMER DRAWING	