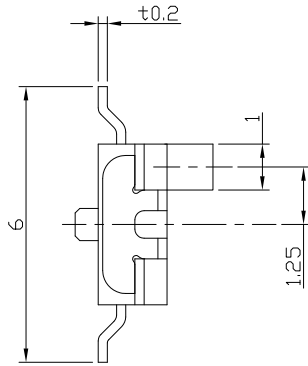
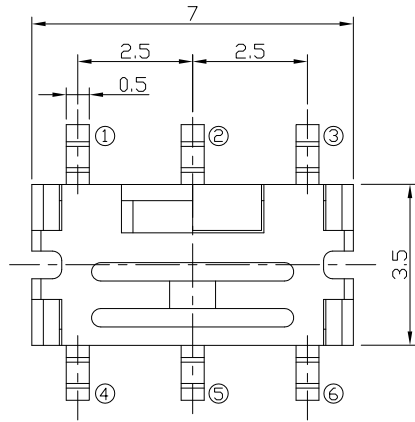




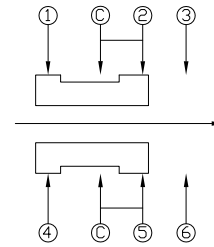
RoHS
Compliant
2002/95/EC

REV.	ECN.	NO.	APPD.

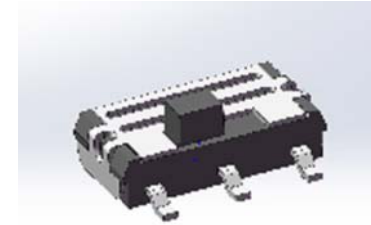
DIMENSIONS



CIRCUIT DIAGRAM



PRODUCT IMAGE



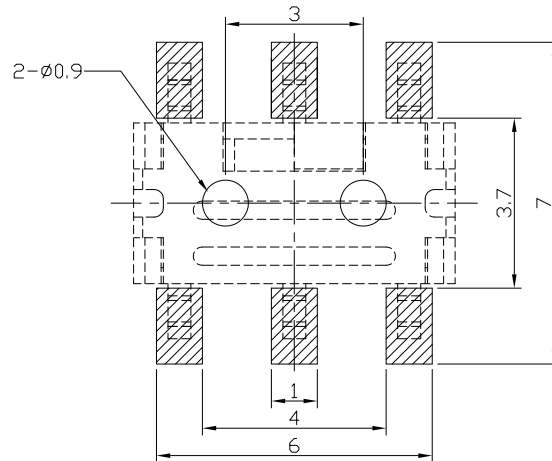
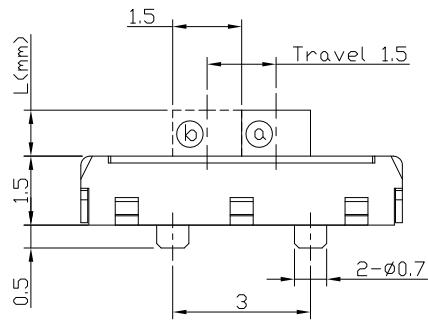
MODEL CODE

AS-1390 □

L	(mm)
A	1.0
B	2.0

P.C.B MOUNTING PATTERN DIMENSION

The following soldering patterns are recommended for reflow soldering



ELECTRO-MECHANICAL CHARACTERISTICS

Refer to additional specifications

Rating	DC 4V 0.3A	
Circuit	2C-2P	
Contact Resistance	70mΩ Max.	
Travel	1.5±0.3mm	
Operating Force	200±100gf	(a) ↔ (b)
Operating Life(cycles)	10,000	

.X ±0.2

X. ±2'

UNITS mm

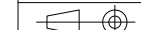
MAT'L

SEE NOTE

FINISH

SEE NOTE

Q'TY



雅安科技有限公司
ACCURATE INNOTECH INC.

TITLE:
MINI SLIDE SWITCH

PART NO.:
AS-1390 SERIES

DR: Ricky 2014/04/03

DWG NO.:
ASI-1390

CHKD: Ricky 2014/04/03

APPD:

SCALE	SHEET	REV.	CUSTOMER
1:1	1/1	A	DRAWING

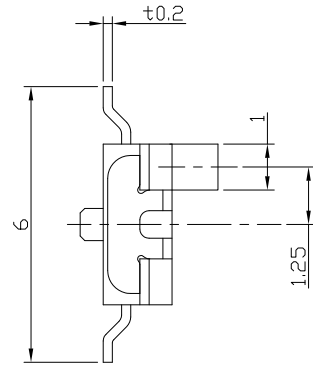
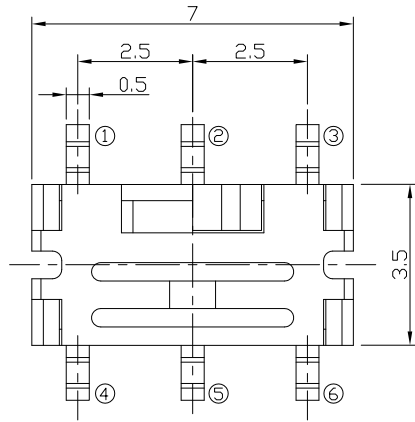
THESE DRAWINGS AND SPECIFICATIONS ARE THE PROPERTY OF ACCURATE INNOTECH INC AND SHALL NOT BE REPRODUCED, COPIED OR USED IN ANY MANNER WITHOUT THE PRIOR WRITTEN CONSENT OF ACCURATE INNOTECH INC.



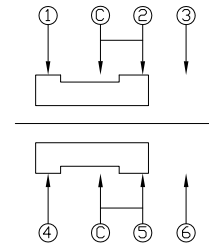
RoHS
Compliant
2002/95/EC

REV.	ECN.	NO.	APPD.

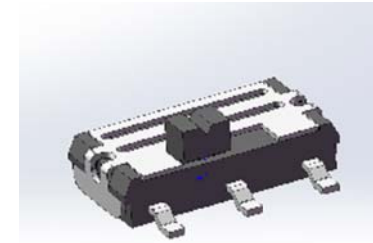
DIMENSIONS



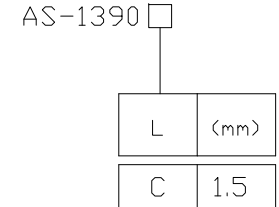
CIRCUIT DIAGRAM



PRODUCT IMAGE

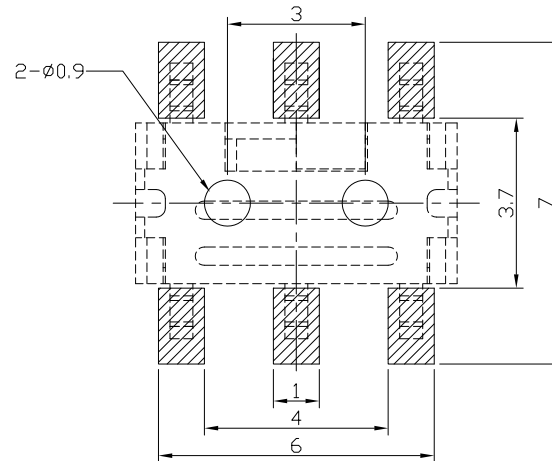
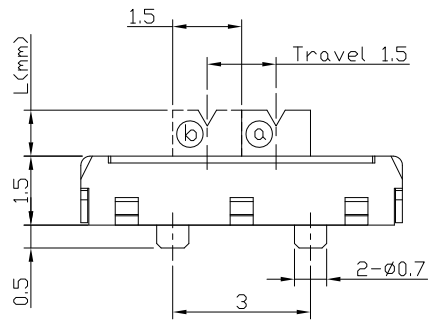


MODEL CODE



P.C.B MOUNTING PATTERN DIMENSION

The following soldering patterns are recommended for reflow soldering



ELECTRO-MECHANICAL CHARACTERISTICS

Refer to additional specifications

Rating	DC 4V 0.3A		
Circuit	2C-2P		
Contact Resistance	70m Ω Max.		
Travel	1.5 \pm 0.3mm		
Operating Force	200 \pm 100gf	(a) \leftrightarrow (b)	
Operating Life(cycles)	10,000		

.X ± 0.2

X. $\pm 2^*$

UNITS mm

MAT'L

SEE NOTE

FINISH

SEE NOTE

Q'TY

APPD:

雅安科技有限公司
ACCURATE INNOTECH INC.

TITLE:
MINI SLIDE SWITCH

PART NO.:
AS-1390 SERIES

DR: Ricky 2014/04/03

DWG NO.:
ASI-1390

CHKD: Ricky 2014/04/03

SCALE SHEET REV. CUSTOMER
1:1 1/1 A DRAWING

THESE DRAWINGS AND SPECIFICATIONS ARE THE PROPERTY OF ACCURATE INNOTECH INC AND SHALL NOT BE REPRODUCED, COPIED OR USED IN ANY MANNER WITHOUT THE PRIOR WRITTEN CONSENT OF ACCURATE INNOTECH INC.

