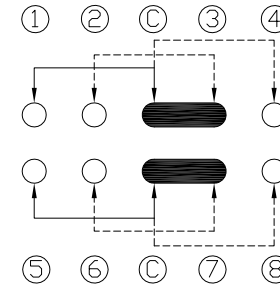
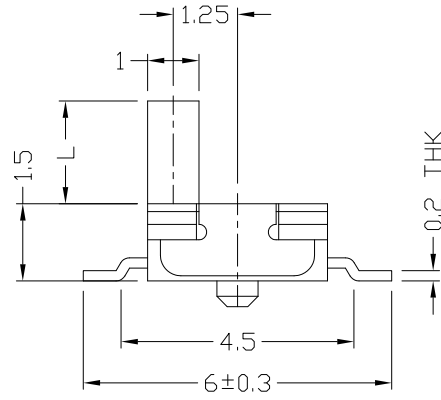
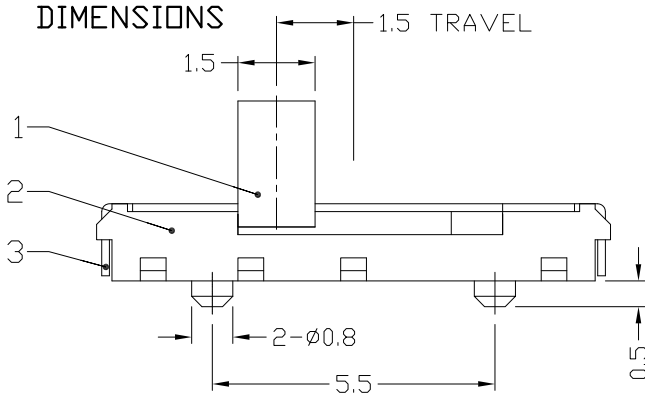




RoHS
Compliant
2002/95/EC

REV.	ECN. NO.	APPD.

DIMENSIONS

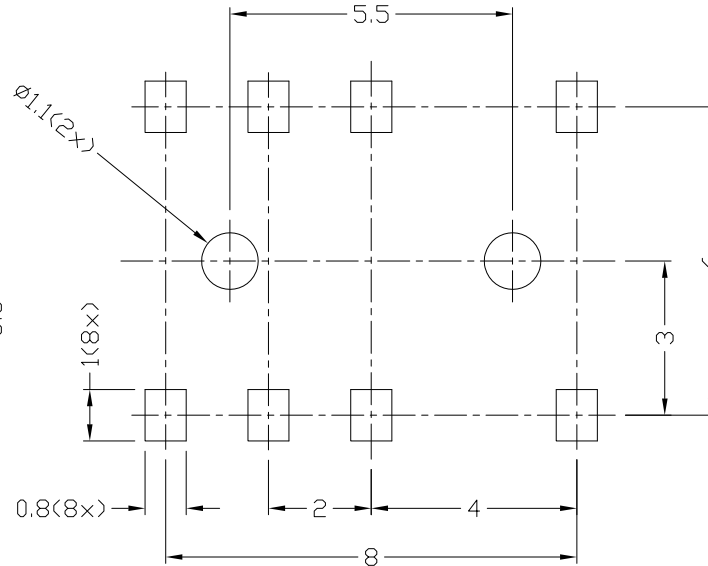
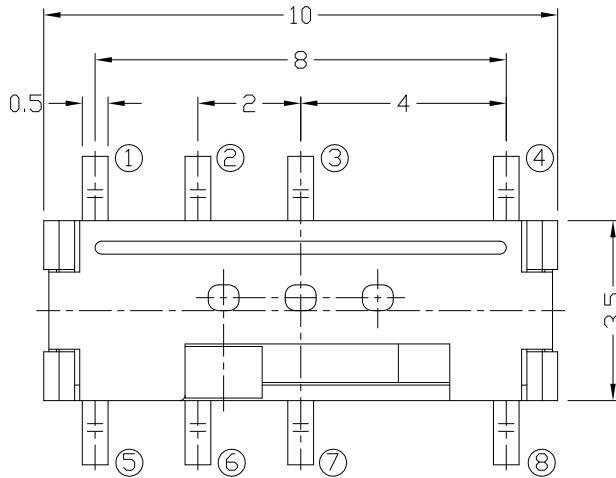


CIRCUIT DIAGRAM

MODEL CODE

AS-1400

L	(mm)
A	1.0
B	2.0
C	1.5



P.C.B LAYOUT

TOP VIEW

ELECTRO-MECHANICAL CHARACTERISTICS
Refer to additional specifications

RATING	DC6V 0.3A
CIRCUIT	2C3P
CONTACT RESISTANCE	70mΩ MAX.
TRAVEL	1.5mm
OPERATING FORCE	200±60gf
OPERATING LIFE(cycles)	10,000

NO.	PARTS	MATERIAL	Q'TY	FINISHING
8				WITHIN 1.5mm±0.1mm
7				OVER 1.5mm±0.2mm
6				
5	SPRING PLATE	SUS	1	NATURAL
4	CONTACT	PBS C5210R-EH	2	Ag CLAD
3	COVER	SUS	1	NATURAL
2	CASE	PA46/BRASS STRIP	1	BLACK/Ag PLATED OVER NI PLATED
1	KNOB	PA46	1	BLACK

THESE DRAWINGS AND SPECIFICATIONS ARE THE PROPERTY OF ACCURATE INNOTECH INC AND SHALL NOT BE REPRODUCED, COPIED OR USED IN ANY MANNER WITHOUT THE PRIOR WRITTEN CONSENT OF ACCURATE INNOTECH INC.

UNITS	mm	雅安科技有限公司 ACCURATE INNOTECH INC.			
MAT'L	SEE NOTE	TITLE:	PART NO.:		
FINISH	SEE NOTE	MINI SLIDE SWITCH / VERTICAL	AS-1400 SERIES		
Q'TY		DR: Ricky 2015/04/14	DWG NO.:		
		CHKD: Ricky 2015/04/14	ADL-1400		
		APPD:	SCALE	SHEET	REV.
			6:1	1/1	A
					CUSTOMER DRAWING