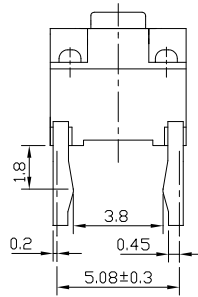
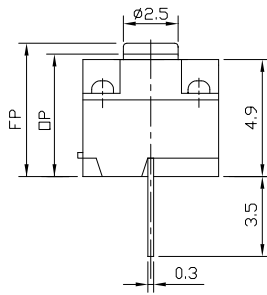
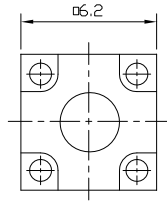




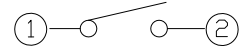
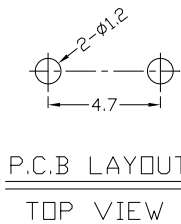
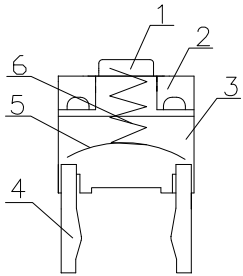
RoHS
Compliant
2002/95/EC

REV.	ECN.	NO.	APPD.

DIMENSIONS



Structure chart



1.Functional spec

1.1 Rated Voltage	DC30V
1.2 Rated Current	50mA
1.3 Contact Resistance	≤100mΩ(Initial value)
1.4 Operating Force	50~100gf
1.5 Bounce Time	
1.6 Free Position	5.7±0.2mm
1.7 Operating Position	5.25±0.2mm
1.8 Position Travel	
1.9 Return Force	

2.Reliable Rating

2.1 Mechanical Life	100,000 CYCLES
2.2 Electrical Life	100,000 CYCLES
2.3 Insulation Resistance	≥100MΩ DC250V
2.4 Withstand Voltage	AC600V 1 minute
2.5 Soldering Technic	Hand Soldering
2.6 Operating Temper	-20°C ~ +70°C
2.7 Ambient Humidity Used	<85%RH

Material list

NO.	PARTS	MATERIAL	Q'TY	FINISHING	Tolerance:±0.2	UNITS	雅安科技有限公司 ACCURATE INNOTECH INC.			
8						mm	TITLE: TACT SWITCH PART NO.: AT-03TL-60G			
7										
6	Spring	SWP	1			MAT'L	DR: <i>Ricky</i> 2017/7/20 DWG NO.: ATD-03TL-60G			
5	Spring Plate	SUS301	1			SEE NOTE				
4	Terminal	C2680	2			FINISH	CHKD: <i>Ricky</i> 2017/7/20			
3	Base	PBT	1			SEE NOTE				
2	Case	PBT	1			Q'TY	SCALE: 1:1 SHEET: 1/1 REV.: A CUSTOMER DRAWING			
1	Button	PBT	1							
							APPD:			

THESE DRAWINGS AND SPECIFICATIONS ARE THE PROPERTY OF ACCURATE INNOTECH INC AND SHALL NOT BE REPRODUCED, COPIED OR USED IN ANY MANNER WITHOUT THE PRIOR WRITTEN CONSENT OF ACCURATE INNOTECH INC.

