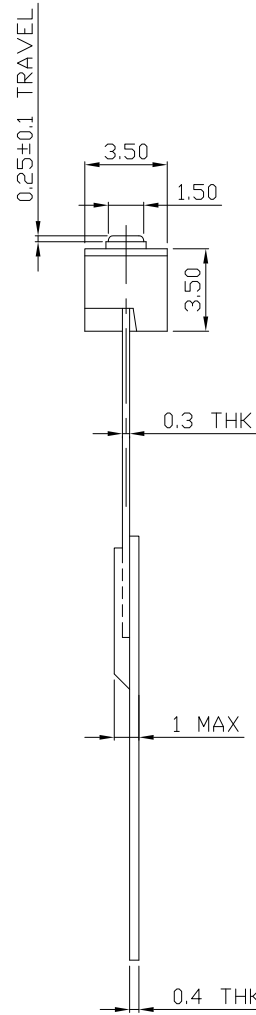
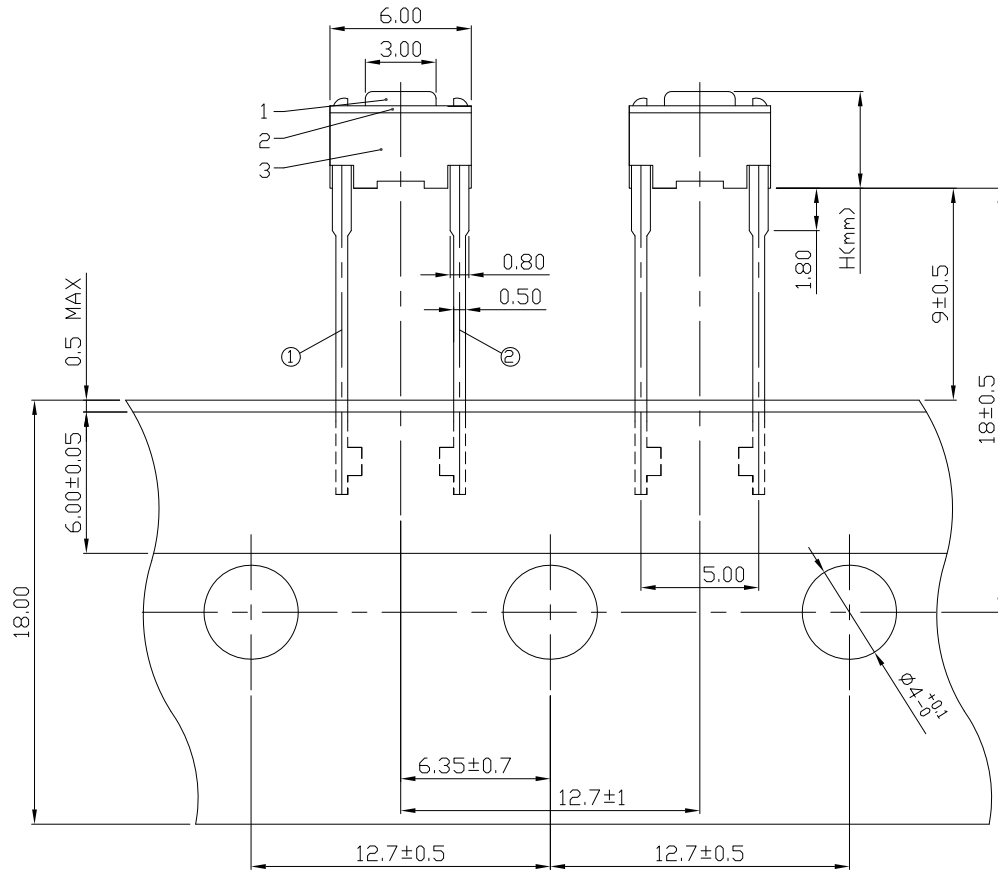




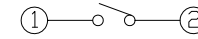
RoHS
Compliant
2002/95/EC

REV.	ECN.	NO.	APPD.

DIMENSIONS



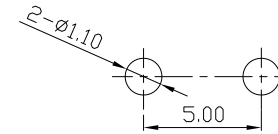
CIRCUIT DIAGRAM MODEL CODE



AT-1101RT-

	H
-	4.3
A	5.0

P.C.B MOUNTING PATTERN DIMENSION



ELECTRO-MECHANICAL CHARACTERISTICS

Refer to additional specifications

Rating	DC 12V 50mA	
Contact Resistance	100mΩ Max.	
Travel	0.25±0.1	
Operating Force	180±50gf	250±100gf
Operating Life(cycles)	30,000	

6	ADHESIVE TAPE	ADHESIVE TAPE			WITHIN 1.5mm:±0.1mm	UNITS mm
5	PAPER TAPE	PAPER			OVER 1.5mm:±0.2mm	MAT'L
4	CONTACT	SUS	1	Ag CALD		SEE NOTE
3	CASE	NYLON+F.G/BRASS STRIP	1	Ag PLATED OVER Ni PLATED		SEE NOTE
2	COVER	SUS	1	NATURAL		SEE NOTE
1	KNOB	NYLON+F.G	1	BLACK/WHITE/RED		Q'TY
NO.	PARTS	MATERIAL	Q'TY	FINISHING		

THESE DRAWINGS AND SPECIFICATIONS ARE THE PROPERTY OF ACCURATE INNOTECH INC AND SHALL NOT BE REPRODUCED, COPIED OR USED IN ANY MANNER WITHOUT THE PRIOR WRITTEN CONSENT OF ACCURATE INNOTECH INC.

雅安科技有限公司 ACCURATE INNOTECH INC.			
TITLE: TACT SWITCH		PART NO.: AT-1101RT SERIES	
DR: <i>Ricky</i> 2017/08/01		DWG NO.: AZJ-1101RT	
CHKD: <i>Ricky</i> 2017/08/01		SCALE	SHEET
APPD:		7:2	1/1
		REV.	CUSTOMER DRAWING
		A	