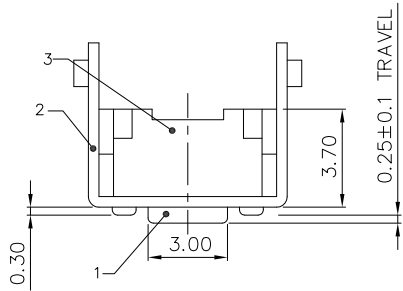




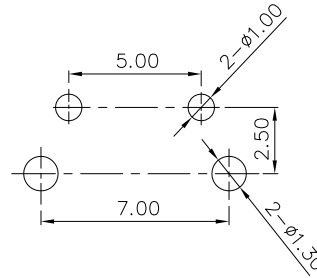
RoHS Compliant
2002/95/EC

REV.	ECN.	NO.	APPD.

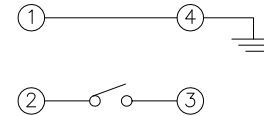
DIMENSIONS



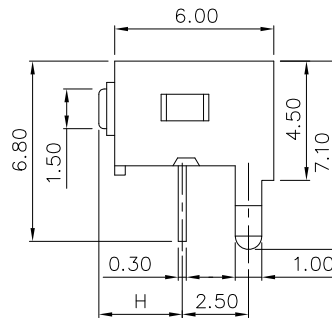
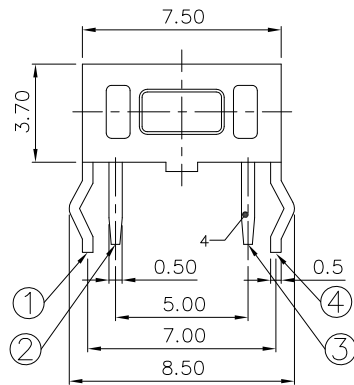
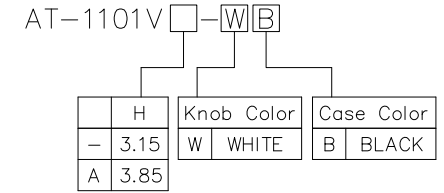
P.C.B MOUNTING PATTERN DIMENSION



CIRCUIT DIAGRAM



MODEL CODE



ELECTRO-MECHANICAL CHARACTERISTICS

Refer to additional specifications

Rating	DC 12V 50mA	
Contact Resistance	100mΩ Max.	
Travel	0.25±0.1mm	
Operating Force	180±50gf	250±100gf
Operating Life (cycles)	30,000	

5	CONTACT	SUS	1	Ag PLATED	WITHIN 1.5mm: ±0.1mm	UNITS mm	雅安科技有限公司 ACCURATE INNOTECH INC.
4	TERMINAL	BRASS STRIP	1	Ag PLATED	OVER 1.5mm: ±0.2mm	MAT'L SEE NOTE	
3	CASE	NYLON+F.G	1	BLACK/WHITE		FINISH SEE NOTE	
2	COVER	MILD STEEL	1	Ni PLATED		Q'TY	
1	KNOB	NYLON+F.G	1	BLACK/WHITE		APPD:	
NO.	PARTS	MATERIAL	Q'TY	FINISHING			TITLE: TACT SWITCH DR: <i>Ricky</i> 2017/08/03 CHKD: <i>Ricky</i> 2017/08/03 SCALE: 5:1 SHEET: 1/1 REV: A CUSTOMER DRAWING

THESE DRAWINGS AND SPECIFICATIONS ARE THE PROPERTY OF ACCURATE INNOTECH INC AND SHALL NOT BE REPRODUCED, COPIED OR USED IN ANY MANNER WITHOUT THE PRIOR WRITTEN CONSENT OF ACCURATE INNOTECH INC.

