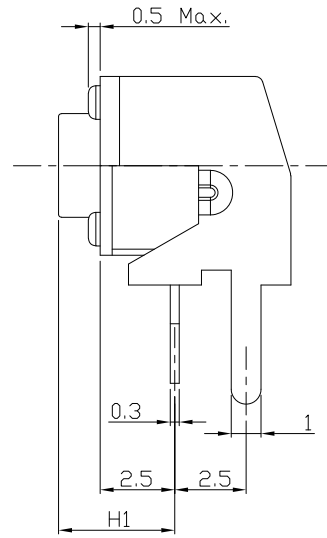
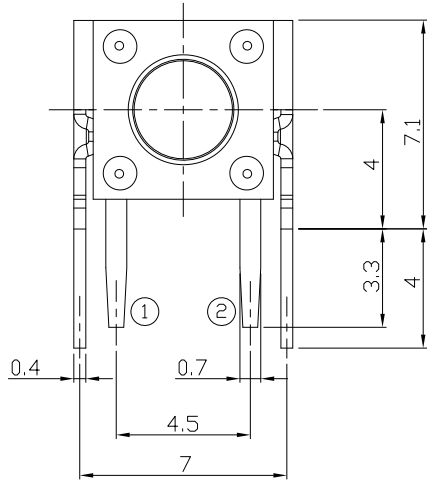




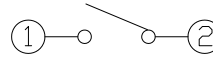
RoHS Compliant
2002/95/EC

| REV. | ECN. NO. | APPD. |
|------|----------|-------|
| | | |
| | | |

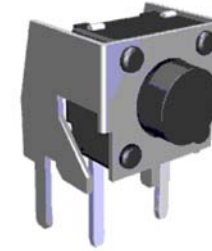
DIMENSIONS



CIRCUIT DIAGRAM



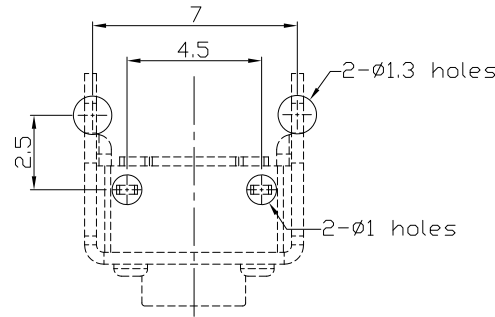
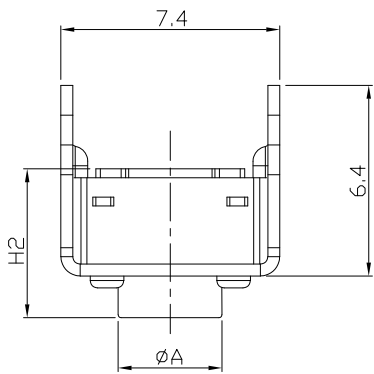
PRODUCT IMAGE



MODEL CODE
Knob/Terminal Options

| AT-1102NS- | H1 | H2 | ØA |
|------------|----------|------|-----|
| - | 3.15 | 4.3 | 3.5 |
| AS | 3.35 | 4.5 | 3.5 |
| A | 3.85 | 5.0 | 3.5 |
| AL | 4.35 | 5.5 | 3.4 |
| Q | 4.85 | 6.0 | 3.4 |
| QL | 5.35 | 6.5 | 3.4 |
| B | 5.85 | 7.0 | 3.4 |
| E | 6.15 | 7.3 | 3.4 |
| EL | 6.35 | 7.5 | 3.4 |
| C | 6.85 | 8.0 | 3.4 |
| CL | 7.35 | 8.5 | 3.4 |
| DS | 7.85 | 9.0 | 3.4 |
| D | 8.35 | 9.5 | 3.4 |
| DL | 8.85 | 10.0 | 3.0 |
| KS | 9.35 | 10.5 | 3.0 |
| K | 9.85 | 11.0 | 3.0 |
| KL | 10.35 | 11.5 | 3.0 |
| FS | 10.85 | 12.0 | 3.0 |
| F | 11.35 | 12.5 | 3.0 |
| FL | 11.85 | 13.0 | 3.0 |
| G | 12.35 | 13.5 | 3.0 |
| D | 12.85 | 14.0 | 3.0 |
| X | 13.35 | 14.5 | 3.0 |
| Y | 13.85 | 15.0 | 3.0 |
| Z | 14.85 | 16.0 | 3.0 |
| J | 15.15 | 16.3 | 3.0 |
| I | 15.85 | 17.0 | 3.0 |
| T | □2.4x2.4 | | |
| TA | □2.8x2.8 | | |

P.C.B MOUNTING PATTERN DIMENSION
The following soldering patterns are recommended for reflow soldering



ELECTRO-MECHANICAL CHARACTERISTICS
Refer to additional specifications

| | | |
|------------------------|--------------|-----------------|
| Rating | DC 12V 50mA | |
| Contact Resistance | 100mΩ Max. | |
| Travel | 0.25 ± 0.1mm | |
| Operating Force | 160±30gf | 250±50gf |
| Operating Life(cycles) | 100,000 | Phosphor Bronze |
| | 200,000 | Stainless Steel |

| | | | | | | | |
|---|--------|--------------------|------------------------------------|-------------------------------|-------|------|------------------|
| .X ±0.3 | X. ±2' | UNITS mm | 雅安科技有限公司 ACCURATE INNOTECH INC. | | | | |
| | | MAT'L | | | | | |
| | | SEE NOTE | TITLE: TACT SWITCH | PART NO.: AT-1102NS SERIES | | | |
| | | FINISH SEE NOTE | DR: <i>Ricky</i> 2014/03/26 | DWG NO.: ASI-1102NS | | | |
| | | Q'TY | CHKD: <i>Ricky</i> 2014/03/26 | SCALE | SHEET | REV. | CUSTOMER DRAWING |
| THESE DRAWINGS AND SPECIFICATIONS ARE THE PROPERTY OF ACCURATE INNOTECH INC AND SHALL NOT BE REPRODUCED, COPIED OR USED IN ANY MANNER WITHOUT THE PRIOR WRITTEN CONSENT OF ACCURATE INNOTECH INC. | | | APPD: | 1:1 | 1/1 | A | |