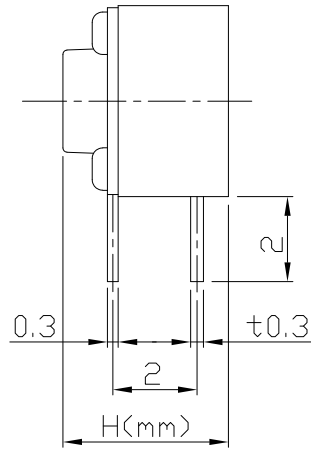
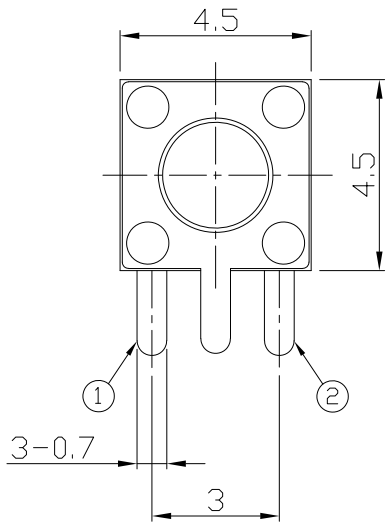




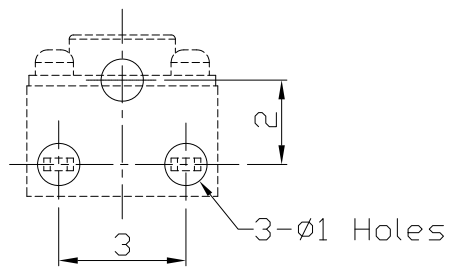
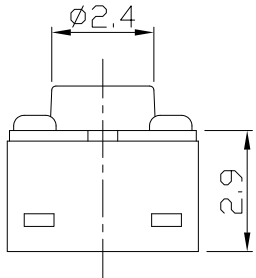
RoHS
Compliant
2002/95/EC

REV.	ECN.	NO.	APPD.

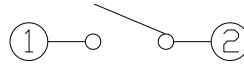
DIMENSIONS



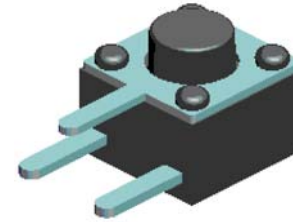
P.C.B MOUNTING PATTERN DIMENSION
The following soldering patterns are recommended for reflow soldering



CIRCUIT DIAGRAM



PRODUCT IMAGE



MODEL CODE

AT-1109VP-

	H
-	3.8
B	4.8
C	5.0
A	7.0

ELECTRO-MECHANICAL CHARACTERISTICS

Refer to additional specifications

Rating	DC 12V 50mA	
Contact Resistance	100mΩ Max.	
Travel	0.2 ± 0.1mm	
Operating Force	160±30gf	250±50gf
Operating Life(cycles)	100,000	

.X ±0.3	X. ±2'	UNITS mm	雅安科技有限公司 ACCURATE INNOTECH INC.			
		MAT'L	TITLE:	PART NO.:		
		SEE NOTE	TACT SWITCH	AT-1109VP SERIES		
		FINISH	DR: Ricky 2017/04/06	DWG NO.:		
		SEE NOTE	CHKD: Ricky 2017/04/06	ASI-1109VP		
		Q'TY	APPD:	SCALE	SHEET	REV.
				1:1	1/1	A
						CUSTOMER DRAWING

THESE DRAWINGS AND SPECIFICATIONS ARE THE PROPERTY OF ACCURATE INNOTECH INC AND SHALL NOT BE REPRODUCED, COPIED OR USED IN ANY MANNER WITHOUT THE PRIOR WRITTEN CONSENT OF ACCURATE INNOTECH INC.