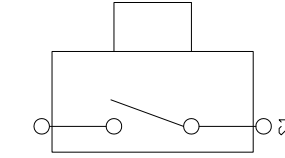
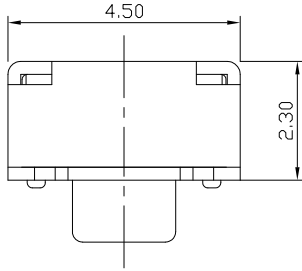




RoHS
Compliant
2002/95/EC

REV.	ECN.	NO.	APPD.

DIMENSIONS

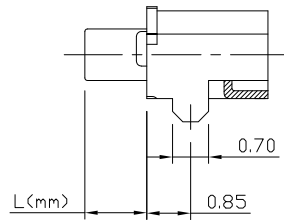
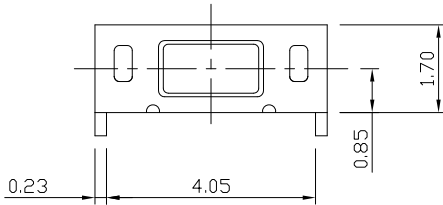


MODEL CODE

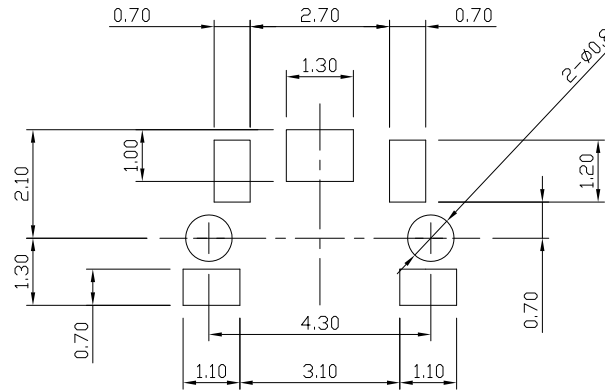
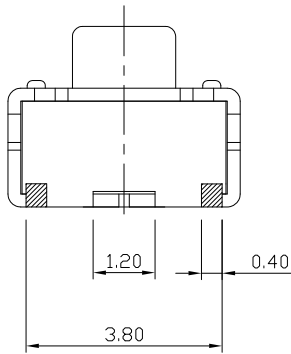
AT-1131CN S

L(mm)	
-	1.2
S	0.5

CIRCUIT DIAGRAM



P.C.B MOUNTING PATTERN DIMENSION



ELECTRO-MECHANICAL CHARACTERISTICS

Refer to additional specifications

RATING	DC12V 50mA
CONTACT RESISTANCE	100mΩ MAX.
TRAVEL	0.2±0.1mm
OPERATING FORCE	160±50gf 250±50gf
OPERATING LIFE(cycles)	100,000

8					.X ±0.05	X. ±3°	UNITS	mm	
7					.XX ±0.01		MAT'L		
6							SEE NOTE	TITLE:	
5								PART NO.:	
4							FINISH	TACT SWITCH	
3							SEE NOTE	AT-1131CN SERIES	
2							Q'TY	DR: <i>Ricky</i> 2015/05/07	
1								DWG NO.:	
NO.	PARTS	MATERIAL	Q'TY	FINISHING	THESE DRAWINGS AND SPECIFICATIONS ARE THE PROPERTY OF ACCURATE INNOTECH INC AND SHALL NOT BE REPRODUCED, COPIED OR USED IN ANY MANNER WITHOUT THE PRIOR WRITTEN CONSENT OF ACCURATE INNOTECH INC.			CHKD: <i>Ricky</i> 2015/05/07	AKS-1131CN
								APPD:	SCALE

雅安科技有限公司 ACCURATE INNOTECH INC.			
TITLE:		PART NO.:	
TACT SWITCH		AT-1131CN SERIES	
DR: <i>Ricky</i> 2015/05/07		DWG NO.:	
CHKD: <i>Ricky</i> 2015/05/07		AKS-1131CN	
APPD:	SCALE	SHEET	REV.
	1:1	1/1	A
		CUSTOMER DRAWING	