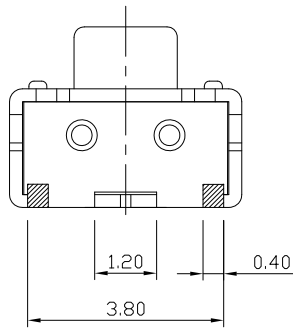
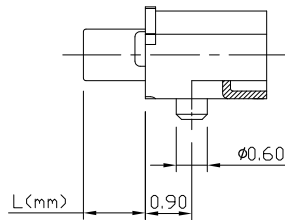
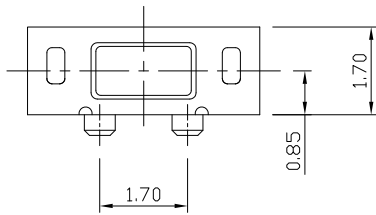
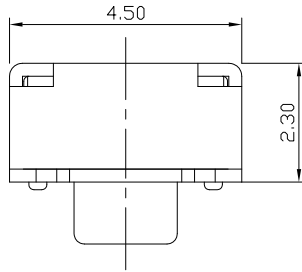




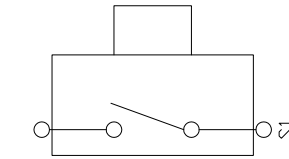
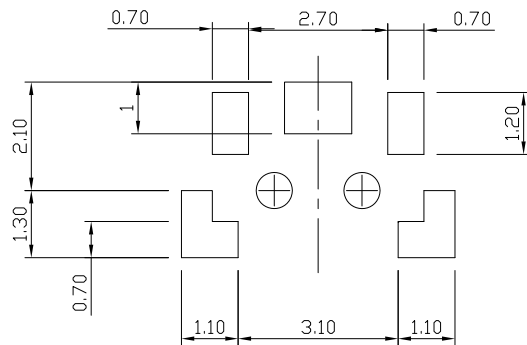
RoHS
Compliant
2002/95/EC

REV.	ECN.	NO.	APPD.

DIMENSIONS



P.C.B MOUNTING PATTERN DIMENSION



CIRCUIT DIAGRAM

MODEL CODE

AT-1131NB S

L(mm)	
-	1.2
S	0.5

ELECTRO-MECHANICAL CHARACTERISTICS

Refer to additional specifications

RATING	DC12V 50mA	
CONTACT RESISTANCE	100mΩ MAX.	
TRAVEL	0.2±0.1mm	
OPERATING FORCE	160±50gf	250±50gf
OPERATING LIFE(cycles)	100,000	

8							
7							
6							
5							
4							
3							
2							
1							
NO.	PARTS	MATERIAL	Q'TY	FINISHING			
1	1						

.X ±0.05	X. ±3°
.XX ±0.01	
THESE DRAWINGS AND SPECIFICATIONS ARE THE PROPERTY OF ACCURATE INNOTECH INC AND SHALL NOT BE REPRODUCED, COPIED OR USED IN ANY MANNER WITHOUT THE PRIOR WRITTEN CONSENT OF ACCURATE INNOTECH INC.	

UNITS	mm
MAT'L	SEE NOTE
FINISH	SEE NOTE
Q'TY	

雅安科技有限公司 ACCURATE INNOTECH INC.			
TITLE: TACT SWITCH		PART NO.: AT-1131NB SERIES	
DR: <i>Ricky</i> 2015/05/07		DWG NO.: AKS-1131NB	
CHKD: <i>Ricky</i> 2015/05/07		SCALE	SHEET
APPD:		1:1	1/1
		REV.:	CUSTOMER DRAWING
		A	