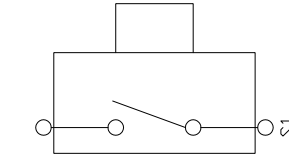
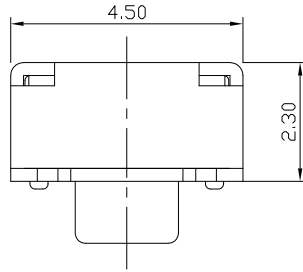




RoHS  
Compliant  
2002/95/EC

REV.	ECN.	NO.	APPD.

DIMENSIONS

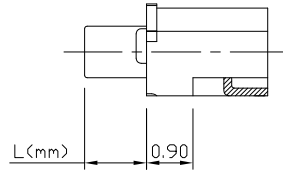
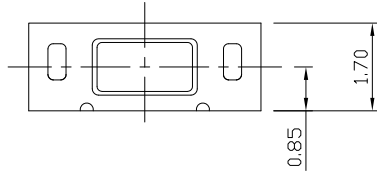


MODEL CODE

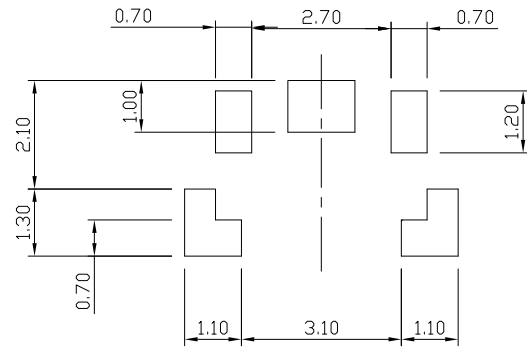
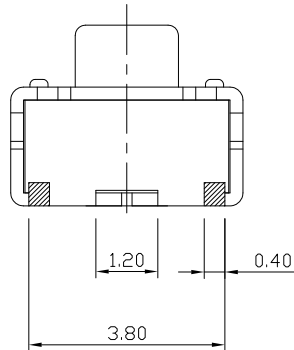
AT-1131NN

L(mm)	
-	1.2
S	0.5

CIRCUIT DIAGRAM



P.C.B MOUNTING PATTERN DIMENSION



ELECTRO-MECHANICAL CHARACTERISTICS

Refer to additional specifications

RATING	DC12V 50mA
CONTACT RESISTANCE	100mΩ MAX.
TRAVEL	0.2±0.1mm
OPERATING FORCE	160±50gf   250±50gf
OPERATING LIFE(cycles)	100,000

8					.X ±0.05	X. ±3°	UNITS	mm
7					.XX ±0.01		MAT'L	
6							SEE NOTE	TITLE:
5							FINISH	PART NO.:
4							SEE NOTE	TACT SWITCH
3							Q'TY	AT-1131NN SERIES
2								DR: <i>Ricky</i> 2015/05/07
1								CHKD: <i>Ricky</i> 2015/05/07
NO.	PARTS	MATERIAL	Q'TY	FINISHING				DWG NO.:
1								AKS-1131NN
								SCALE
								1:1
								SHEET
								1/1
								REV.
								A
								CUSTOMER
								DRAWING

THESE DRAWINGS AND SPECIFICATIONS ARE THE PROPERTY OF ACCURATE INNOTECH INC AND SHALL NOT BE REPRODUCED, COPIED OR USED IN ANY MANNER WITHOUT THE PRIOR WRITTEN CONSENT OF ACCURATE INNOTECH INC.

雅安科技有限公司 ACCURATE INNOTECH INC.			
TITLE:		PART NO.:	
TACT SWITCH		AT-1131NN SERIES	
DR: <i>Ricky</i> 2015/05/07		DWG NO.:	
CHKD: <i>Ricky</i> 2015/05/07		AKS-1131NN	
APPD:	SCALE	SHEET	REV.
	1:1	1/1	A
			CUSTOMER
			DRAWING