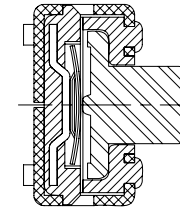
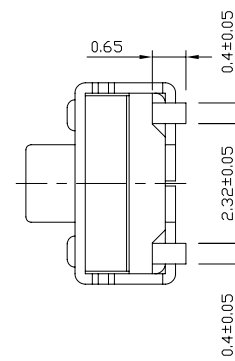
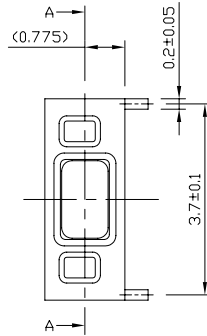
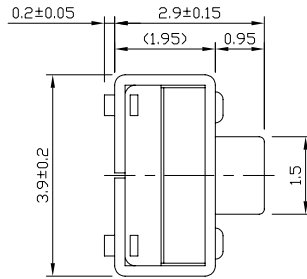
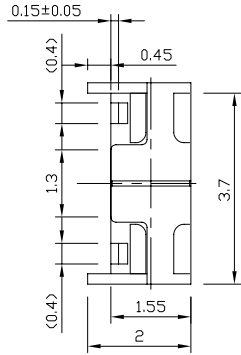




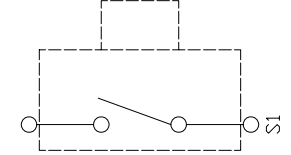
RoHS  
Compliant  
2002/95/EC

REV.	ECN.	NO.	APPD.

### DIMENSIONS

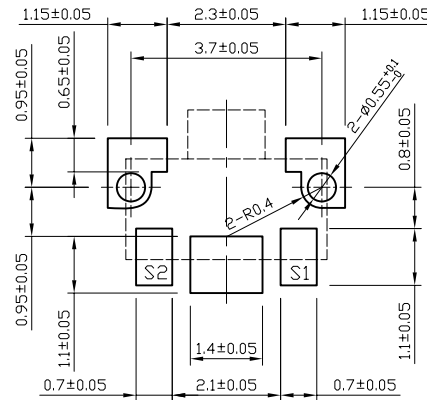
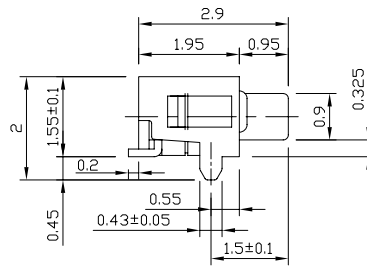
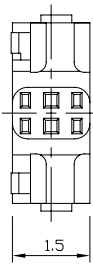


SECTION A-A



CIRCUIT DIAGRAM

### P.C.B MOUNTING PATTERN DIMENSION



### ELECTRO-MECHANICAL CHARACTERISTICS

Refer to additional specifications

RATING	DC12V 20mA
CONTACT RESISTANCE	100mΩ MAX.
TRAVEL	0.2±0.08mm
OPERATING FORCE	160±30gf
OPERATING LIFE(cycles)	100,000

8					.X ±0.05	X. ±1*	UNITS	mm	雅安科技有限公司 <b>ACCURATE INNOTECH INC.</b> TITLE: TACT SWITCH PART NO.: AT-1133CN SERIES DR: <i>Ricky</i> 2015/05/11 DWG NO.: AKS-1133CN CHKD: <i>Ricky</i> 2015/05/11 APPD:			
7							MAT'L					
6							SEE NOTE					
5							FINISH					
4							SEE NOTE					
3							Q'TY					
2							THESE DRAWINGS AND SPECIFICATIONS ARE THE PROPERTY OF ACCURATE INNOTECH INC AND SHALL NOT BE REPRODUCED, COPIED OR USED IN ANY MANNER WITHOUT THE PRIOR WRITTEN CONSENT OF ACCURATE INNOTECH INC.					
1												
NO.	PARTS	MATERIAL	Q'TY	FINISHING					SCALE	SHEET	REV.	CUSTOMER DRAWING
	1								1:1	1/1	A	