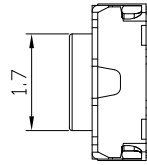
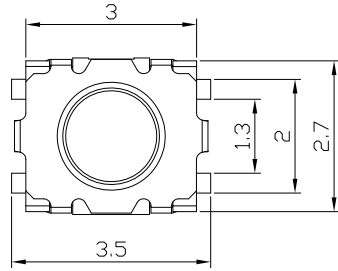




RoHS  
Compliant  
2002/95/EC

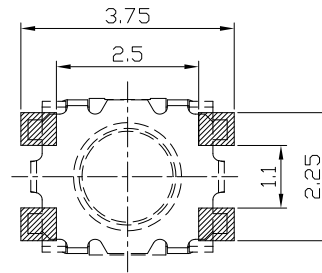
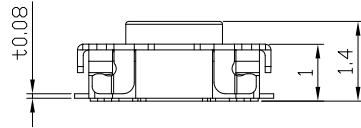
REV.	ECN. NO.	APPD.

### DIMENSIONS

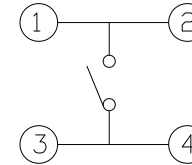


### P.C.B MOUNTING PATTERN DIMENSION

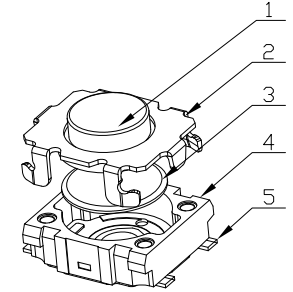
The following soldering patterns are recommended for reflow soldering



### CIRCUIT DIAGRAM



### PRODUCT IMAGE



### ELECTRO-MECHANICAL CHARACTERISTICS

Refer to additional specifications

Rating	DC 12V 50mA	
Contact Resistance	100mΩ Max.	
Travel	0.15 ± 0.1mm	
Operating Force	160±50gf	250±50gf
Operating Life(cycles)	100,000	

NO	PARTS	MATERIAL	QTY	FINISHING	.X ±0.3	X. ±2'	UNITS mm
6							
5	Knob	LCP	1				MAT'L
4	Cover	Stainless Steel	1				SEE NOTE
3	Contact	Stainless Steel	2	Ag Clad			FINISH
2	Case	LCP	1				SEE NOTE
1	Terminal	Phosphor Bronze	1	Ag Plating			Q'TY
<small>THESE DRAWINGS AND SPECIFICATIONS ARE THE PROPERTY OF ACCURATE INNOTECH INC AND SHALL NOT BE REPRODUCED, COPIED OR USED IN ANY MANNER WITHOUT THE PRIOR WRITTEN CONSENT OF ACCURATE INNOTECH INC.</small>							

<b>雅安科技有限公司</b> <b>ACCURATE INNOTECH INC.</b>			
TITLE: TACT SWITCH		PART NO.: AT-1136 SERIES	
DR: <i>Ricky</i> 2024/03/25		DWG NO.: ASI-1136	
CHKD: <i>Ricky</i> 2024/03/25		SCALE: 1:1	SHEET: 1/1
APPD:		REV: A	CUSTOMER DRAWING