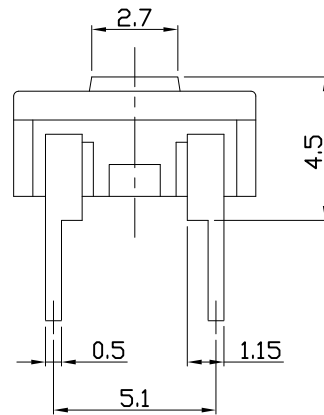
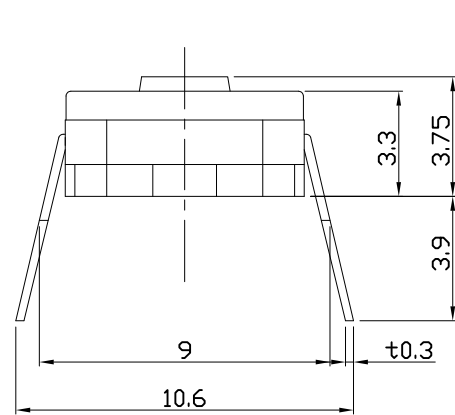




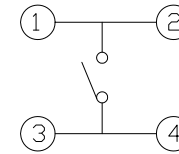
RoHS
Compliant
2002/95/EC

REV.	ECN.	NO.	APPD.

DIMENSIONS



CIRCUIT DIAGRAM

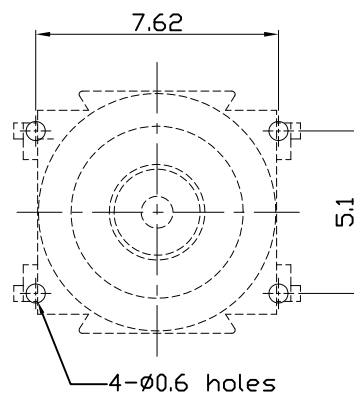
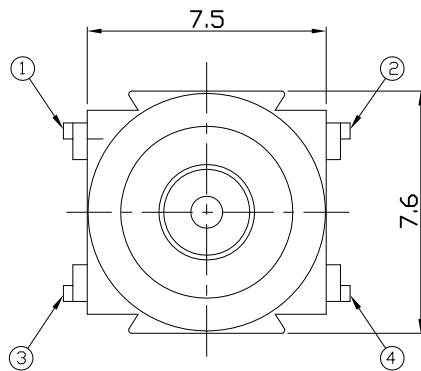


PRODUCT IMAGE



P.C.B MOUNTING PATTERN DIMENSION

The following soldering patterns are recommended for reflow soldering



ELECTRO-MECHANICAL CHARACTERISTICS

Refer to additional specifications

Rating	DC 12V 0.1A	
Contact Resistance	100mΩ Max.	
Insulation Resistance	100MΩ (DC 500V / 1 min) Min.	
Withstanding Voltage	250 VAC / min.	
Travel	0.45 ± 0.15mm	
Operating Force	300±80gf	160±50gf
Operating Life(cycles)	100,000	

.X ±0.3	X. ±2'
UNITS mm	
MAT'L	SEE NOTE
FINISH	SEE NOTE
Q'TY	

THESE DRAWINGS AND SPECIFICATIONS ARE THE PROPERTY OF ACCURATE INNOTECH INC AND SHALL NOT BE REPRODUCED, COPIED OR USED IN ANY MANNER WITHOUT THE PRIOR WRITTEN CONSENT OF ACCURATE INNOTECH INC.

雅安科技有限公司 ACCURATE INNOTECH INC.			
TITLE: TACT SWITCH Soft feeling		PART NO.: AT-1155 SERIES	
DR: <i>Ricky</i> 2014/04/01		DWG NO.: ASI-1155	
CHKD: <i>Ricky</i> 2014/04/01		SCALE	SHEET
APPD:		1:1	1/1
		REV.	CUSTOMER
		A	DRAWING

