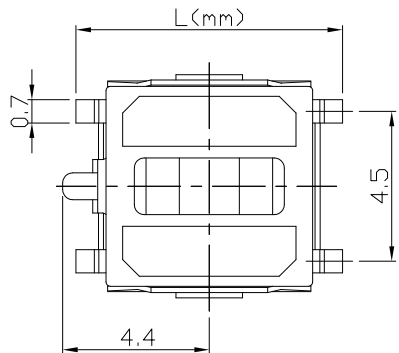
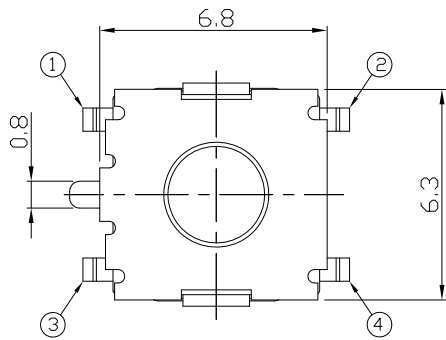
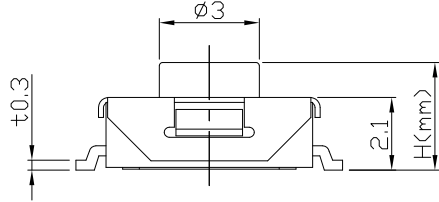




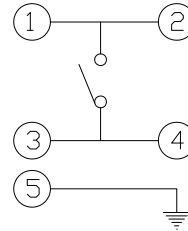
RoHS
Compliant
2002/95/EC

REV.	ECN.	NO.	APPD.

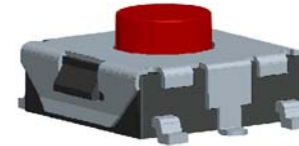
DIMENSIONS



CIRCUIT DIAGRAM



PRODUCT IMAGE



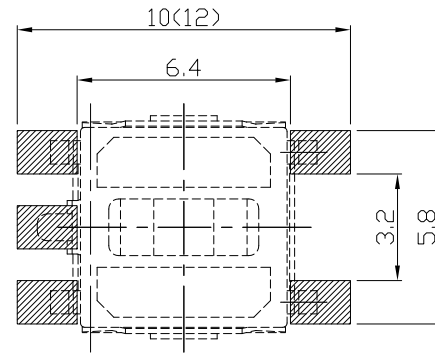
MODEL CODE

AT-1157 NP

	L		H
A	8	S	2.5
B	10	B	2.7
		H	3.1
		Q	3.4

P.C.B MOUNTING PATTERN DIMENSION

The following soldering patterns are recommended for reflow soldering



ELECTRO-MECHANICAL CHARACTERISTICS

Refer to additional specifications

Rating	DC 12V 50mA	
Contact Resistance	100mΩ Max.	
Travel	0.25 ± 0.1mm	
Operating Force	100,130,160±30gf	250±50gf
Operating Life(cycles)	100,000	Phosphor Bronze
	200,000	Stainless Steel

.X ±0.3	X. ±2'	UNITS	mm			
		MAT'L	SEE NOTE			
THESE DRAWINGS AND SPECIFICATIONS ARE THE PROPERTY OF ACCURATE INNOTECH INC AND SHALL NOT BE REPRODUCED, COPIED OR USED IN ANY MANNER WITHOUT THE PRIOR WRITTEN CONSENT OF ACCURATE INNOTECH INC.	Q'TY	FINISH	SEE NOTE			
		DR:	Ricky 2014/03/28		DWG NO.: ASI-1157XXNP	
		CHKD:	Ricky 2014/03/28		SCALE	
		APPD:			1:1	SHEET 1/1

雅安科技有限公司
ACCURATE INNOTECH INC.

TITLE: TACT SWITCH PART NO.: AT-1157XXNP SERIES

DR: Ricky 2014/03/28 DWG NO.: ASI-1157XXNP

CHKD: Ricky 2014/03/28 SCALE 1:1 SHEET 1/1 REV. A CUSTOMER DRAWING