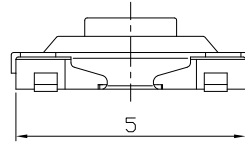
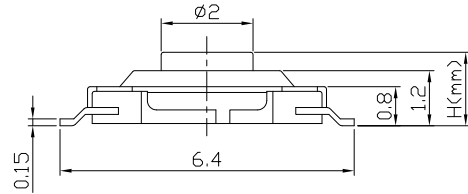




RoHS
Compliant
2002/95/EC

REV.	ECN.	NO.	APPD.

DIMENSIONS



PRODUCT IMAGE

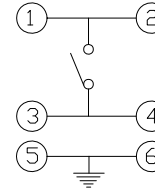


MODEL CODE

AT-1187P-

	H	Knob	Color	Material
-	1.5	GD	Gold	Brass
A	4.3	SR	Silver	Brass
B	1.7	WT	White	PolyAmide
C	1.6	GY	Grey	PolyAmide
D	2.3	BK	Black	PolyAmide
E	3.0			

CIRCUIT DIAGRAM



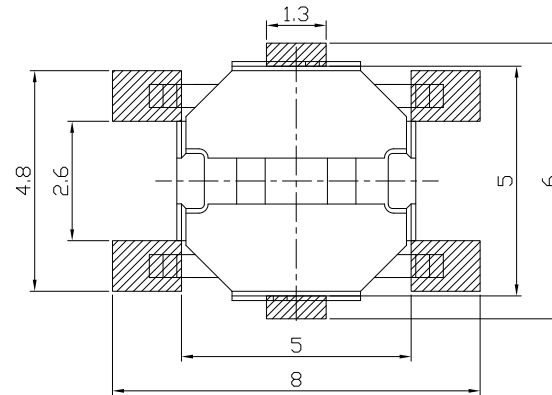
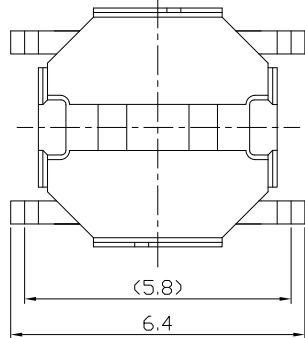
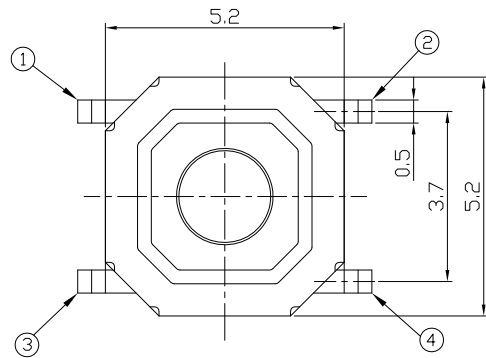
P.C.B MOUNTING PATTERN DIMENSION

The following soldering patterns are recommended for reflow soldering

ELECTRO-MECHANICAL CHARACTERISTICS

Refer to additional specifications

Rating	DC 12V 50mA
Contact Resistance	100mΩ Max.
Travel	0.2 ± 0.05mm
Operating Force	160±30gf 250±50gf
Operating Life(cycles)	100,000



.X ±0.2

X. ±2'

UNITS mm

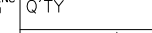
MAT'L

SEE NOTE

FINISH

SEE NOTE

Q'TY



THESE DRAWINGS AND SPECIFICATIONS ARE THE PROPERTY OF ACCURATE INNOTECH INC AND SHALL NOT BE REPRODUCED, COPIED OR USED IN ANY MANNER WITHOUT THE PRIOR WRITTEN CONSENT OF ACCURATE INNOTECH INC.

雅安科技有限公司
ACCURATE INNOTECH INC.

TITLE:
TACT SWITCH

PART NO.:
AT-1187P SERIES

DR: *Ricky* 2014/03/31

DWG NO.:
ASI-1187P

CHKD: *Ricky* 2014/03/31

APPD:

SCALE	SHEET	REV.	CUSTOMER
1:1	1/1	A	DRAWING