



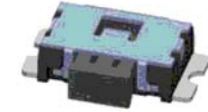
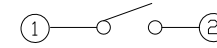
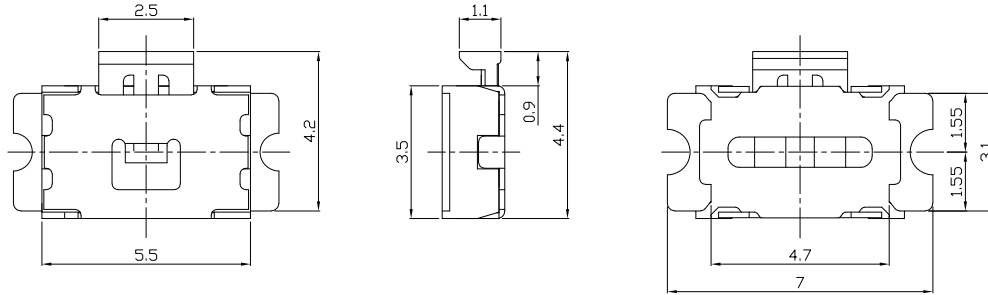
RoHS  
Compliant  
2002/95/EC

REV.	ECN.	NO.	APPD.

DIMENSIONS

CIRCUIT DIAGRAM

PRODUCT IMAGE

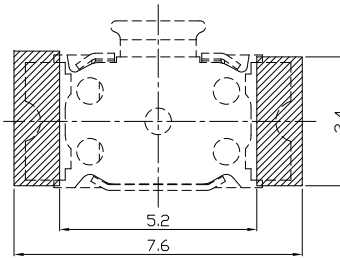
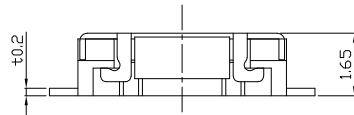


P.C.B MOUNTING PATTERN DIMENSION

The following soldering patterns are recommended for reflow soldering

ELECTRO-MECHANICAL CHARACTERISTICS

Refer to additional specifications



Rating	DC 12V 50mA
Contact Resistance	100mΩ Max.
Travel	0.2 ± 0.1mm
Operating Force	200±50gf
Operating Life(cycles)	50,000

.X ±0.3	X. ±2'
UNITS mm	
MAT'L SEE NOTE	
FINISH SEE NOTE	
Q'TY	
<small>THESE DRAWINGS AND SPECIFICATIONS ARE THE PROPERTY OF ACCURATE INNOTECH INC AND SHALL NOT BE REPRODUCED, COPIED OR USED IN ANY MANNER WITHOUT THE PRIOR WRITTEN CONSENT OF ACCURATE INNOTECH INC.</small>	

雅安科技有限公司 ACCURATE INNOTECH INC.			
TITLE: TACT SWITCH		PART NO.: AT-1192 SERIES	
DR: <i>Ricky</i> 2024/03/22		DWG NO.: ASI-1192	
CHKD: <i>Ricky</i> 2024/03/22		SCALE: 1:1	SHEET: 1/1
APPD:		REV.: A	CUSTOMER DRAWING