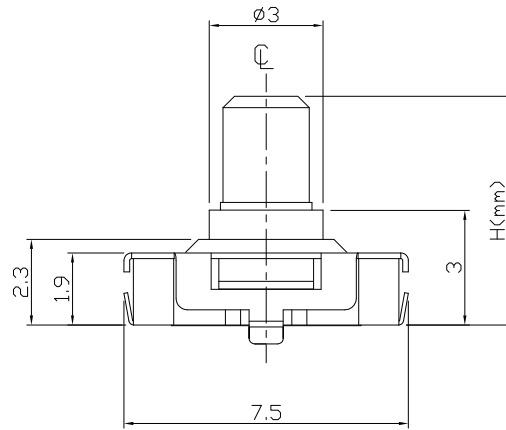
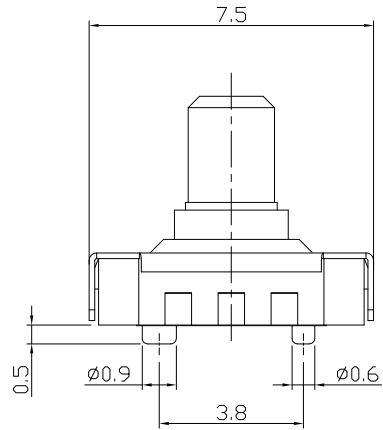




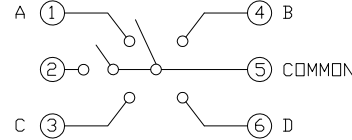
RoHS Compliant
2002/95/EC

REV.	ECN.	NO.	APPD.

DIMENSIONS



CIRCUIT DIAGRAM



PRODUCT IMAGE

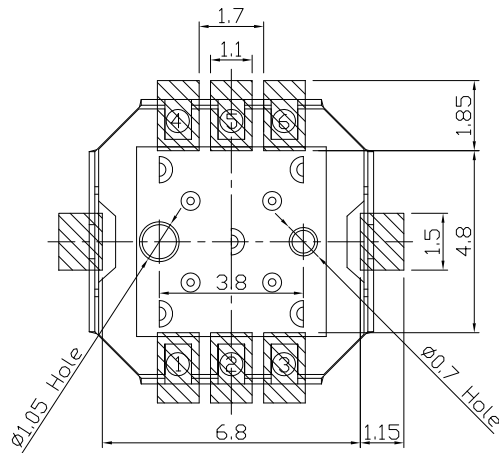
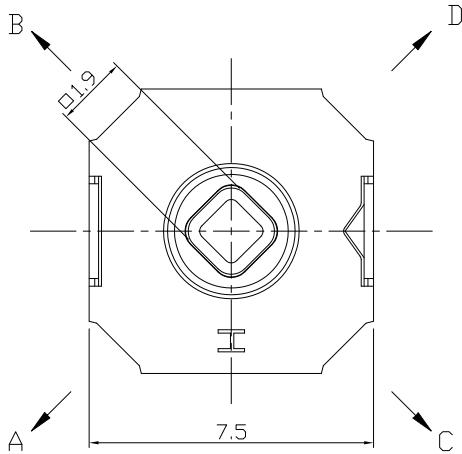


MODEL CODE

AT-1501-H
5.0
6.0

P.C.B MOUNTING PATTERN DIMENSION

The following soldering patterns are recommended for reflow soldering



ELECTRO-MECHANICAL CHARACTERISTICS

Refer to additional specifications

Rating	DC 15V 20mA	
Contact Resistance	100mΩ Max.	
Insulation Resistance	100MΩ Min.	
Withstand Voltage	AC 250V Min.	
Operating Force	4 Direction	160±50gf
	Center	250±50gf
Travel	4 Direction	0.25±0.1mm
	Center	0.15±0.1mm
Operating Life(cycles)	100,000	

.X	±0.2	X.	±2'
UNITS	mm		
MAT'L			
SEE NOTE			
FINISH			
SEE NOTE			
Q'TY			

雅安科技有限公司 ACCURATE INNOTECH INC.			
TITLE: 5 DIRECTION TACT SWITCH	PART NO.: AT-1501 SERIES		
DR: Ricky 2024/03/22	DWG NO.: ASI-1501		
CHKD: Ricky 2024/03/22	SCALE: 1:1	SHEET: 1/1	REV. A
APPD:	CUSTOMER DRAWING		

THESE DRAWINGS AND SPECIFICATIONS ARE THE PROPERTY OF ACCURATE INNOTECH INC AND SHALL NOT BE REPRODUCED, COPIED OR USED IN ANY MANNER WITHOUT THE PRIOR WRITTEN CONSENT OF ACCURATE INNOTECH INC.