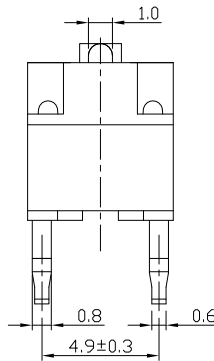
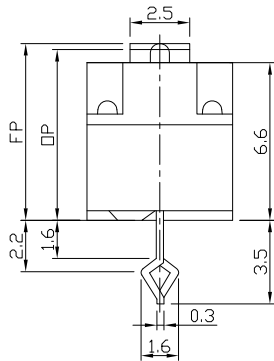
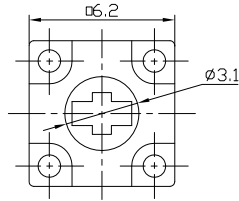




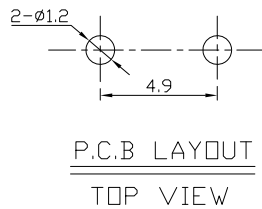
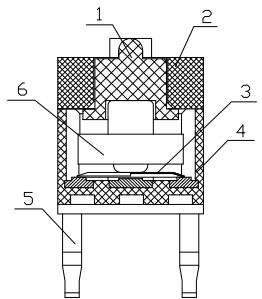
RoHS
Compliant
2002/95/EC

REV.	ECN.	NO.	APPD.

DIMENSIONS



Structure chart



P.C.B LAYOUT
TOP VIEW

CIRCUIT DIAGRAM

1.Functional spec

1.1 Rated Voltage	DC30V
1.2 Rated Current	50mA
1.3 Contact Resistance	≤100mΩ(Initial value)
1.4 Operating Force	70±20gf
1.5 Bounce Time	
1.6 Free Position	7.35±0.2mm
1.7 Operating Position	7.0±0.2mm
1.8 Position Travel	
1.9 Return Force	

2.Reliable Rating

2.1 Mechanical Life	1,000,000 CYCLES
2.2 Electrical Life	1,000,000 CYCLES
2.3 Insulation Resistance	≥100MΩ DC250V
2.4 Withstand Voltage	AC600V 1 minute
2.5 Soldering Technic	Hand/Reflow soldering
2.6 Operating Temper	-20°C ~ +70°C
2.7 Ambient Humidity Used	<85%RH

Material list

NO.	PARTS	MATERIAL	Q'TY	FINISHING	Tolerance:±0.2	UNITS	雅安科技有限公司 ACCURATE INNOTECH INC.			
8						mm	TITLE: TACT SWITCH PART NO: AT-2706TJ-70G			
7										
6	Thimble	RUBBER	1				SCALE: 1:1 SHEET: 1/1 REV: A CUSTOMER DRAWING			
5	Terminal	C2680	2							
4	Base	Nylon	1				APPD:			
3	Spring Plate	SUS301	1							
2	Case	Nylon	1							
1	Button	Nylon	1							