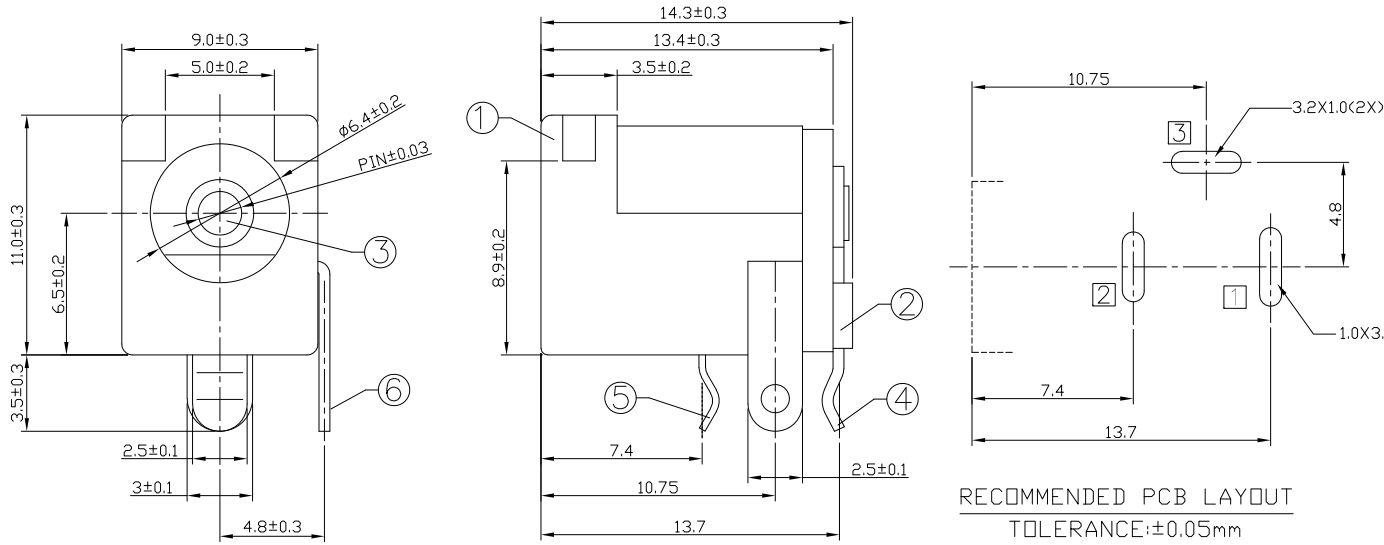




RoHS
Compliant
2002/95/EC

| REV. | ECN. NO. | APPD. |
|------|----------|-------|
| | | |
| | | |

DIMENSIONS



RECOMMENDED PCB LAYOUT
TOLERANCE: ± 0.05 mm
(BOTTOM VIEW)

MODEL CODE:

DCB0-0005G- A □ PB BK I 0 4

(1) (2) (3)(4) (5) (6) (7)(8) (9)

(1):Series type:DIP DC POWER JACK.

(2):Series No.

(3):Schematic option: A , B

(4):Center pin diameter:

H= $\phi 2.0$, I= $\phi 2.35$, J= $\phi 2.5$

(5):Material of housing:

PB=PBT (Standard)

(6):Housing color:

BK=Black , 2R=Red(0046) , 4H=Yellow(0039)

(7):Terminal plating

T=Tin(Sn)

(8):Special option:

0=No special option

(9):Packing mode:

4=Bag packing

Specification:

1.Rating : DC 20V/2.5A.

2.Contact resistance: ≤ 30 m Ω

After test: ≤ 50 m Ω

3.Insulation resistance: ≥ 100 M Ω (500VDC).

After test: ≥ 50 M Ω

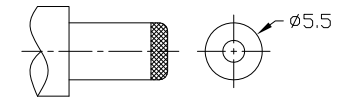
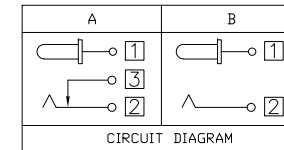
4.Withstanding voltage: 500VAC.

5.Insertion and extraction force: 3N-30N.

6.Life test: 5000 cycles min.

7.Operation temperature range:-20 $^{\circ}$ C~70 $^{\circ}$ C.

8.Preservative temperature range:-40 $^{\circ}$ C~85 $^{\circ}$ C.



DC MATE PLUG

| Model No. | H | I | J |
|------------|------------|-------------|------------|
| CENTER PIN | $\phi 2.0$ | $\phi 2.35$ | $\phi 2.5$ |

○: ITEM NO. □: TERMINAL NO.

| NO. | PARTS | MATERIAL | Q'TY | FINISHING | TOLERANCE | ANGLES | UNITS |
|-----|-----------------------|-----------------|------|--------------|-----------|-----------------|----------|
| ⑥ | Shunt terminal ③ | Brass | 1 | Tin plating | | | mm |
| ⑤ | Tip spring ② | Phosphor bronze | 1 | Tin plating | ± 0.3 | $\pm 2^{\circ}$ | MAT'L |
| ④ | Center pin terminal ① | Brass | 1 | Tin plating | | | SEE NOTE |
| ③ | Center pin | Brass | 1 | CuSn plating | | | FINISH |
| ② | Cover | PBT UL94V-0 | 1 | Black | | | SEE NOTE |
| ① | Housing | PBT UL94V-0 | 1 | Black | | | Q'TY |
| | | | | | | | |

THESE DRAWINGS AND SPECIFICATIONS ARE THE PROPERTY OF ACCURATE INNOTECH INC AND SHALL NOT BE REPRODUCED, COPIED OR USED IN ANY MANNER WITHOUT THE PRIOR WRITTEN CONSENT OF ACCURATE INNOTECH INC.

| | | | |
|------------------------------------|--|-------------------------|------------------|
| 雅安科技有限公司 ACCURATE INNOTECH INC. | | | |
| TITLE: DIP DC POWER JACK | | PART NO.: DCB0-0005G | |
| DR: Ricky 2019/03/06 | | DWG NO.: AB0-0005G | |
| CHKD: Ricky 2019/03/06 | | SCALE | SHEET |
| APPD: | | 1:1 | 1/1 |
| | | REV. | CUSTOMER DRAWING |
| | | A | |