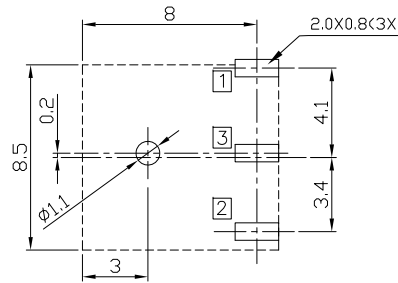
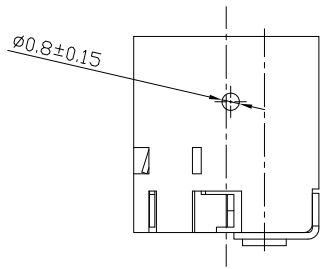
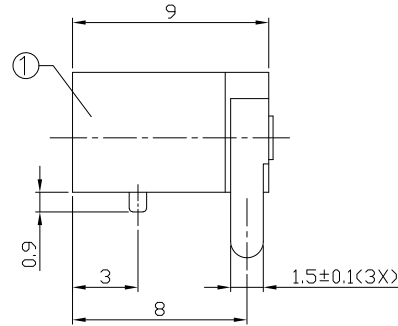
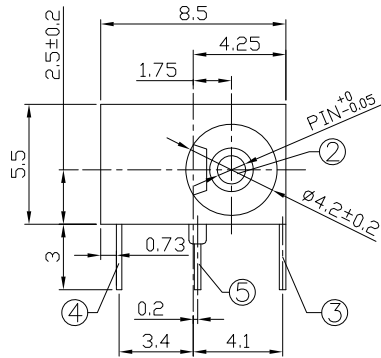




RoHS
Compliant
2002/95/EC

REV.	ECN.	NO.	APPD.

DIMENSIONS



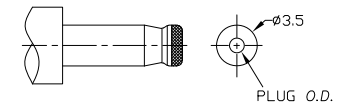
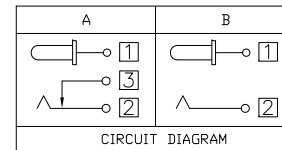
RECOMMENDED P.C.B. LAYOUT
UNSPECIFIED TOLERANCE:±0.05
(BOTTOM VIEW)

MODEL CODE:

- DCB0-00060- A □ 66 BK I 0 4
 (1) (2) (3)(4) (5) (6) (7)(8) (9)
 (1):Series type:DIP DC POWER JACK.
 (2):Series No.
 (3):Schematic option: A , B
 (4):Center pin diameter:
 C=φ1.0 , E=φ1.3
 (5):Material of housing:
 66=PA66
 (6):Housing color:
 BK=Black
 (7):Terminal plating
 S=Silver(Ag) , T=Tin(Sn)
 (8):Special option:
 0=No special option
 (9):Packing mode:
 4=Bag packing

Specification:

- Rating : DC 20V 2A.
- Contact resistance : ≤50mΩ
After test: ≤100mΩ
- Insulation resistance : ≥100MΩ (500VDC).
After test: ≥50MΩ
- Withstanding voltage: 500VAC .
- Insertion and extraction force: 3N~30N.
- life test: 5000cycles min.
- Operation temperature range:-20℃~70℃.
- Preservative temperature range:-40℃~85℃.



DC MATE PLUG

Model No.	C	E
CENTER PIN	φ1.0	φ1.3
PLUG O.D.	φ1.05 ^{+0.10} _{-0.00}	φ1.35 ^{+0.10} _{-0.00}

○: ITEM NO. □: TERMINAL NO.

NO.	PARTS	MATERIAL	Q'TY	FINISHING	TOLERANCE	ANGLES	UNITS
⑤	Shunt terminal ③	Brass t0.3	1	Silver/Tin plating	±0.3	±2'	mm
④	Tip spring ②	Stainless steel t0.25	1	Silver/Tin plating			SEE NOTE
③	Center pin terminal ①	Brass t0.3	1	Silver/Tin plating			SEE NOTE
②	Center pin	Copper Alloy	1	CuSn plating			SEE NOTE
①	Housing	PA66	1	Black			SEE NOTE
							Q'TY

THESE DRAWINGS AND SPECIFICATIONS ARE THE PROPERTY OF ACCURATE INNOTECH INC AND SHALL NOT BE REPRODUCED, COPIED OR USED IN ANY MANNER WITHOUT THE PRIOR WRITTEN CONSENT OF ACCURATE INNOTECH INC.

雅安科技有限公司 ACCURATE INNOTECH INC.			
TITLE: DIP DC POWER JACK		PART NO.: DCB0-00060	
DR: <i>Ricky</i> 2019/03/06		DWG NO.: AB0-00060	
CHKD: <i>Ricky</i> 2019/03/06		SCALE	SHEET
APPD:	1:1	1/1	REV. A
			CUSTOMER DRAWING