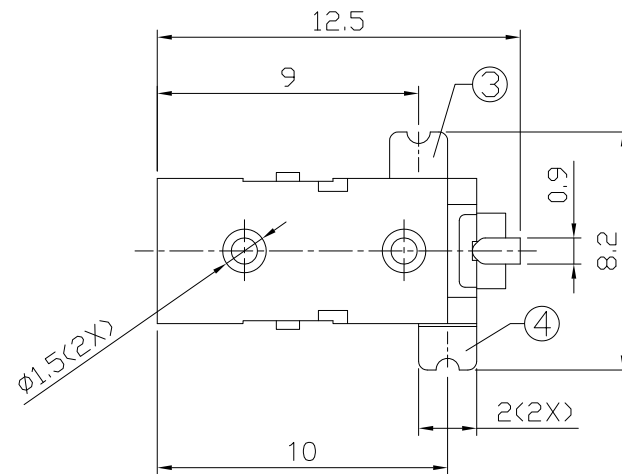
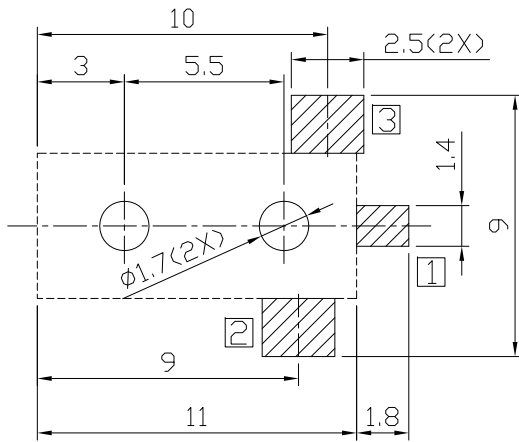
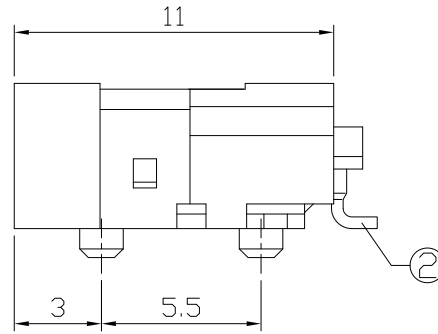
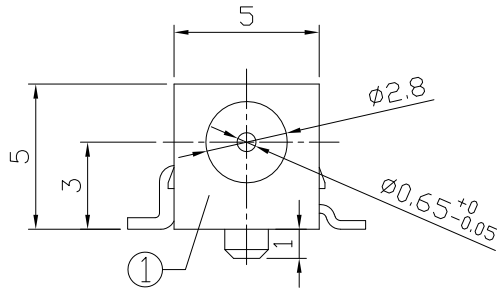




RoHS
Compliant
2002/95/EC

REV.	ECN. NO.	APPD.

DIMENSIONS

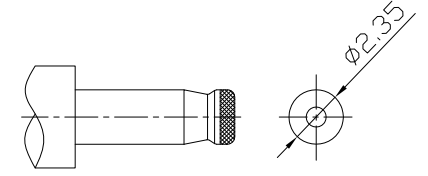
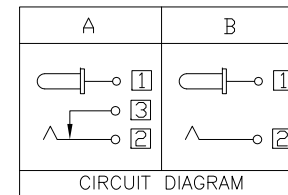


RECOMMENDED P.C.B. LAYOUT
UNSPECIFIED TOLERANCE:±0.05
(TOP VIEW)

MODEL CODE:
DCB0-0011B- A A 9T BK S 0 1
(1):Series type:SMD DC POWER JACK.
(2):Series No.
(3):Schematic option: A, B
(4):Center pin diameter:
A=∅0.65
(5):Material of housing:
9T=PA9T(Standard)
(6):Housing color:
BK=Black
(7):Terminal plating:
S=Silver(Ag)
(8):Special option:
0=No special option
(9):Packing mode:
1=Reel packing

Specification:

- Rating : DC 30V 1A.
- Contact resistance: ≤50mΩ
After test:≤100mΩ
- Insulation resistance: ≥100MΩ (DC500V).
After test:≥50MΩ
- Withstanding voltage: 500VAC.
- Insertion and extraction force: 3N~30N.
- life test: 5000cycles min.
- Operation temperature range:-20°C~70°C
- Preservative temperature range:-40°C~85°C



DC MATE PLUG

○: ITEM NO. □: TERMINAL NO.

NO.	PARTS	MATERIAL	Q'TY	FINISHING	TOLERANCE	ANGLES	UNITS
④	Shunt terminal ③	Brass t0.4	1	Silver plating	±0.3	±2°	mm
③	Tip spring ②	Stainless steel t0.25	1	Silver plating			
②	Center pin ①	Phosphor bronze	1	Silver plating			
①	Housing	PA9T	1	Black			

THESE DRAWINGS AND SPECIFICATIONS ARE THE PROPERTY OF ACCURATE INNOTECH INC AND SHALL NOT BE REPRODUCED, COPIED OR USED IN ANY MANNER WITHOUT THE PRIOR WRITTEN CONSENT OF ACCURATE INNOTECH INC.

雅安科技有限公司 ACCURATE INNOTECH INC.			
TITLE: SMD DC POWER JACK		PART NO.: DCB0-0011B	
DR: Ricky 2018/06/12		DWG NO.: AB0-0011B	
CHKD: Ricky 2018/06/12		SCALE	SHEET
APPD:		1:1	1/1
		REV.	CUSTOMER DRAWING
		A	