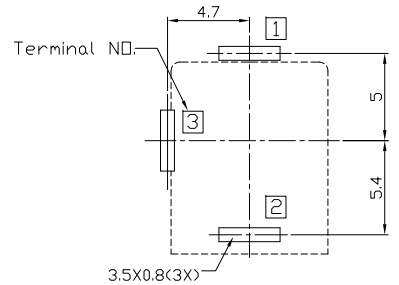
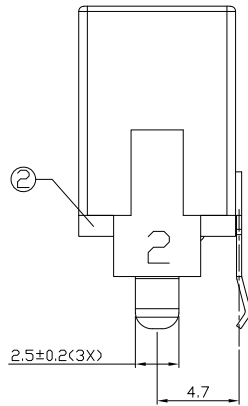
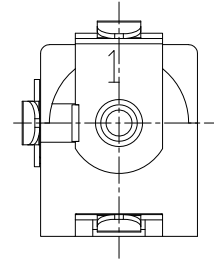
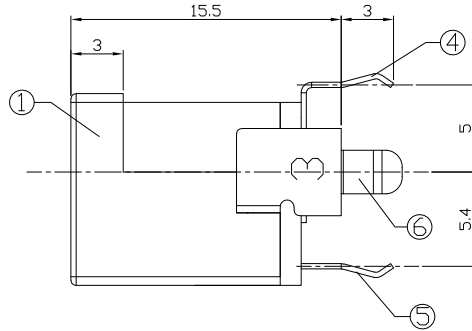
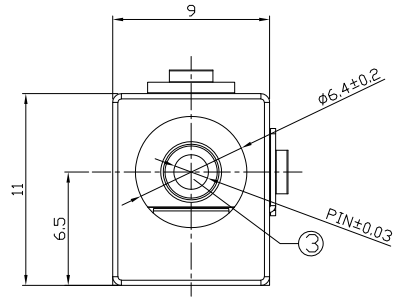




RoHS
Compliant
2002/95/EC

REV.	ECN.	NO.	APPD.

DIMENSIONS



RECOMMENDED P.C.B. LAYOUT
UNSPECIFIED TOLERANCE:±0.05
(BOTTOM VIEW)

MODEL CODE:

DCB0-00130- A □ PB BK T 0 4

(1) (2) (3)(4) (5) (6) (7)(8) (9)

(1):Series type:DIP DC POWER JACK.

(2):Series No.

(3):Schematic option: A , B

(4):Center pin diameter:

H=φ2.0 , I=φ2.35 , J=φ2.5

(5):Material of housing:

PB=PBT (Standard)

(6):Housing color:

BK=Black

(7):Terminal plating

T=Tin(Sn)

(8):Special option:

0=No special option

(9):Packing mode:

4=Bag packing

Specification:

1.Rating :DC 20V 2.5A.

2.Contact resistance :≤30mΩ

After test:≤50mΩ

3.Insulation resistance : ≥100MΩ (500VDC).

After test:≥50MΩ

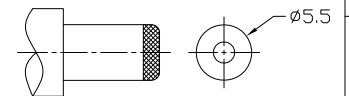
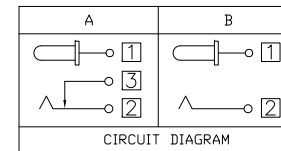
4.Withstanding voltage: 500VAC .

5.Insertion and extraction force: 3N~30N.

6.life test: 5000cycles min.

7.□operation temperature range:-20℃~70℃.

8.Preservative temperature range:-40℃~85℃.



DC MATE PLUG

Model No.	H	I	J
CENTER PIN	φ2.0	φ2.35	φ2.5

○: ITEM NO. □: TERMINAL NO.

NO.	PARTS	MATERIAL	Q'TY	FINISHING	TOLERANCE	ANGLES	UNITS	雅安科技有限公司 ACCURATE INNOTECH INC.			
⑥	Shunt terminal ③	Brass t=0.3	1	Tin plating	±0.3	±2'	mm	TITLE: DIP DC POWER JACK PART NO.: DCB0-00130			
⑤	Tip spring ②	Phosphor bronze t=0.3	1	Tin plating			MAT'L SEE NOTE				
④	Center pin terminal ①	Brass t=0.3	1	Tin plating				DR: Ricky 2019/03/07 DWG NO.: AB0-00130			
③	Center pin ①	Copper alloy	1	Nickel plating							
②	Cover	PF	1					SCALE: 1:1 SHEET: 1/1 REV: A CUSTOMER DRAWING			
①	Housing	PBT	1	Black							
								THESE DRAWINGS AND SPECIFICATIONS ARE THE PROPERTY OF ACCURATE INNOTECH INC AND SHALL NOT BE REPRODUCED, COPIED OR USED IN ANY MANNER WITHOUT THE PRIOR WRITTEN CONSENT OF ACCURATE INNOTECH INC.			