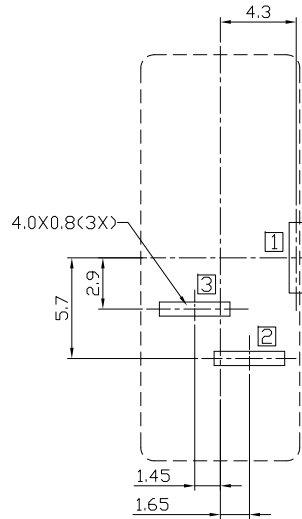
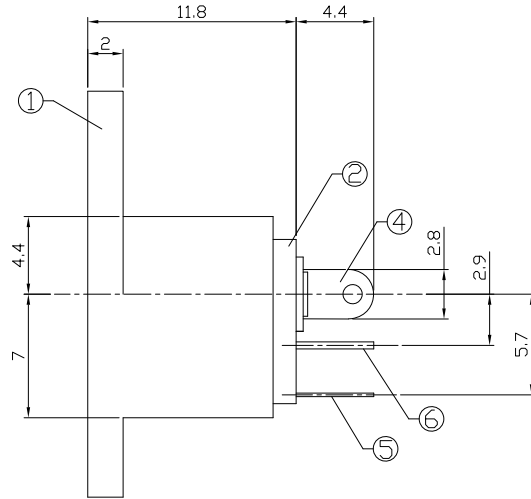
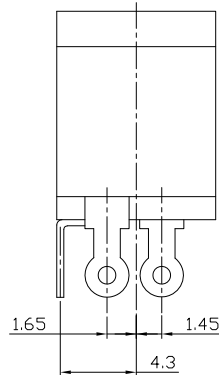
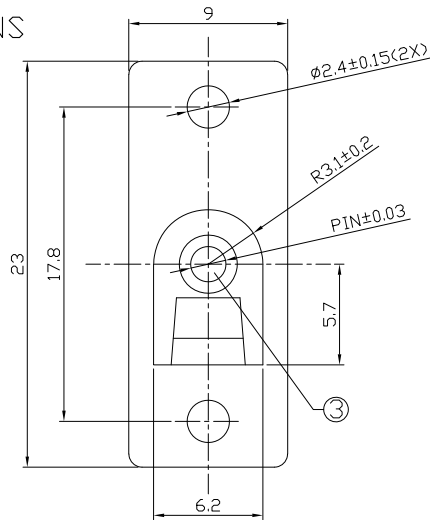




RoHS
Compliant
2002/95/EC

REV.	ECN.	NO.	APPD.

DIMENSIONS



RECOMMENDED P.C.B. LAYOUT
UNSPECIFIED TOLERANCE: ± 0.05
(BOTTOM VIEW)

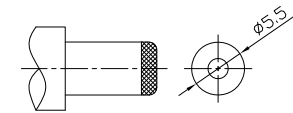
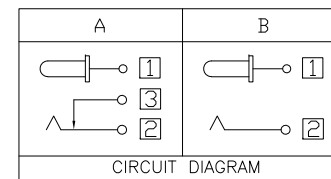
MODEL CODE:

DCB0-00190- A □ PB BK T 0 4

- (1) (2) (3) (4) (5) (6) (7) (8) (9)
 (1): Series type: DIP DC POWER JACK.
 (2): Series No.
 (3): Schematic option: A, B
 (4): Center pin diameter:
 H = $\phi 2.0$, I = $\phi 2.35$, J = $\phi 2.5$
 (5): Material of housing:
 PB = PBT (Standard)
 (6): Housing color:
 BK = Black
 (7): Terminal plating:
 T = Tin (Sn)
 (8): Special option:
 0 = No special option
 (9): Packing mode:
 4 = Bag Packing

SPECIFICATION:

- Rating: DC 20V 2.5A.
- Contact resistance: $\leq 50m\Omega$
After life test: $\leq 100m\Omega$
- Insulation resistance: $\geq 100M\Omega$ (500VDC).
After life test: $\geq 50M\Omega$
- Withstand voltage: 500VAC.
- Insertion and extraction force: 3N~30N.
- Life test: 5000cycles min.
- Operation temperature range: $-20^{\circ}C \sim 70^{\circ}C$.
- Preservative temperature range: $-40^{\circ}C \sim 85^{\circ}C$.



Model No.	H	I	J
CENTER PIN	$\phi 2.0$	$\phi 2.35$	$\phi 2.5$

○: ITEM NO. □: TERMINAL NO.

NO.	PARTS	MATERIAL	Q'TY	FINISHING	TOLERANCE	ANGLES	UNITS	雅安科技有限公司 ACCURATE INNOTECH INC.			
							mm				
6	Shunt terminal ③	Brass	1	Tin plating	±0.3	±2°	MAT'L	TITLE: DIP DC POWER JACK	PART NO.: DCB0-00190		
5	Tip spring ②	Stainless steel	1	Tin plating			SEE NOTE				
4	Center pin terminal ①	Brass	1	Tin plating	SEE NOTE	SEE NOTE	FINISH	DR: Ricky 2024/08/11	DWG NO.: AB0-00190		
3	Center pin	Copper alloy	1	Nickel plating			SEE NOTE				
2	Cover	PBT	1	Black	THESE DRAWINGS AND SPECIFICATIONS ARE THE PROPERTY OF ACCURATE INNOTECH INC AND SHALL NOT BE REPRODUCED, COPIED OR USED IN ANY MANNER WITHOUT THE PRIOR WRITTEN CONSENT OF ACCURATE INNOTECH INC.	Q'TY	CHKD: Ricky 2024/08/11	SCALE	SHEET	REV.	CUSTOMER
1	Housing	PBT	1	Black			APPD:	1:1	1/1	A	DRAWING