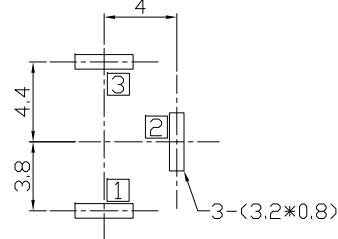
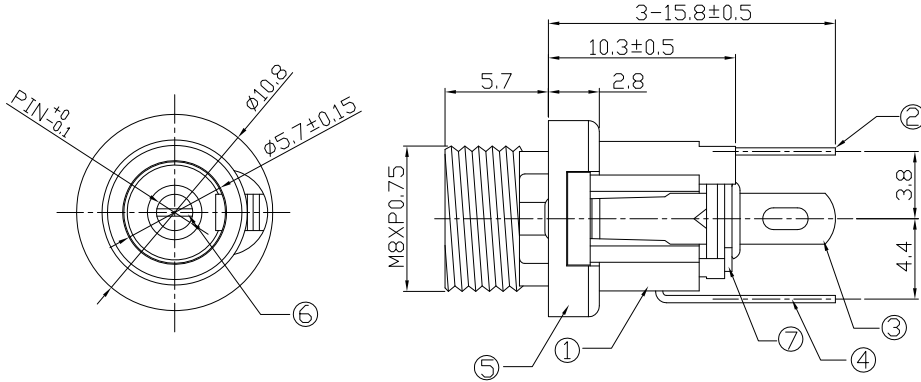




RoHS  
Compliant  
2002/95/EC

REV.	ECN.	NO.	APPD.

DIMENSIONS



RECOMMENDED P.C.B. LAYOUT  
UNSPECIFIED TOLERANCE:±0.05  
(TOP VIEW)

MODEL CODE:

DCB0-0025M- A □ PB BK C 0 4

(1) (2) (3)(4) (5) (6) (7)(8) (9)

(1):Series type:DIP DC POWER JACK.

(2):Series No.

(3):Schematic option: A , B

(4):Center pin diameter:

H=∅2.0 , I=∅2.35 , J=∅2.5

(5):Material of housing:

PB=PBT

(6):Housing color:

BK=Black

(7):Terminal plating

S=Silver(Ag)

T=Tin(Sn)

C=copper&tin alloy plating (Standard)

(8):Special option:

0=No special option

(9):Packing mode:

4=Bag packing

SPECIFICATION:

1.Rating : DC 30V 3A;

2.Contact resistance: ≤50mΩ;

After test:≤50mΩ

3.Insulation resistance: ≥100MΩ (DC500V);

After test:≥50MΩ

4.Withstand voltage: 500VAC ;

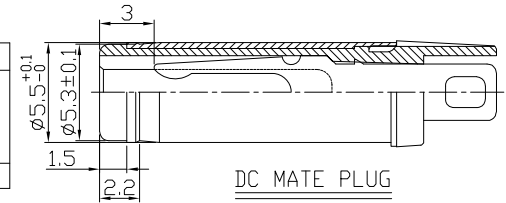
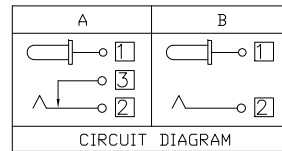
5.Insertion and extraction force: 3-30N;

6.life test: 5,000 cycles;

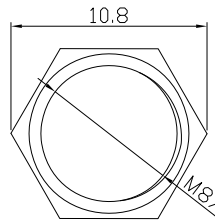
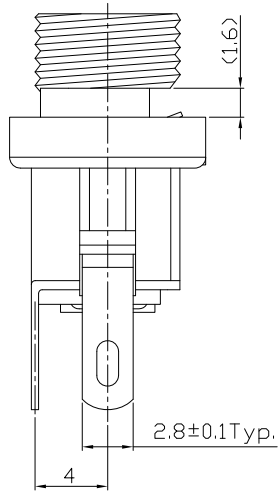
7.Operation temperature range:-20°C~70°C;

8.Preservative temperature range:-40°C~85°C;

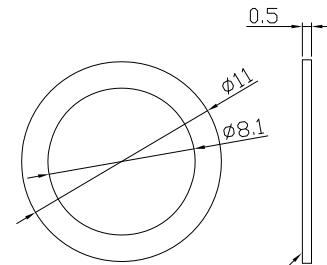
9.Torque standard of nut:12 N.m Max.



Model No.	H	I	J
CENTER PIN	∅2.0	∅2.35	∅2.5



Nut



Washer

○: ITEM NO. □: TERMINAL NO.

NO.	PARTS	MATERIAL	Q'TY	FINISHING
9	Washer-2	Spcc	1	Nickel plating
8	Nut	Brass	1	Nickel plating
7	Washer-1	Bakelite	2	
6	Pin	Bronze	1	Nickel plating
5	Bushing	Brass	1	Nickel plating
4	Shunt Terminal ③	Brass	1	Copper&tin plating
3	Tip Spring ②	Phosphor bronze	1	Copper&tin plating
2	Center pin terminal ①	Brass	1	Copper&tin plating
1	Housing	PBT	1	Black

TOLERANCE	ANGLES	UNITS
.X ±0.38	X ±5°	mm
.XX ±0.30	.X ±3°	
.XXX ±0.15	.XX ±2°	

UNITS	MAT'L	FINISH	Q'TY
mm	SEE NOTE	SEE NOTE	

雅安科技有限公司  
ACCURATE INNOTECH INC.

TITLE: DIP DC POWER JACK PART NO.: DCB0-0025M

DR: Ricky 2019/04/10 DWG NO.: AB0-0025M

CHKD: Ricky 2019/04/10

APPD:

SCALE	SHEET	REV.	CUSTOMER
1:1	1/1	A	DRAWING

THESE DRAWINGS AND SPECIFICATIONS ARE THE PROPERTY OF ACCURATE INNOTECH INC AND SHALL NOT BE REPRODUCED, COPIED OR USED IN ANY MANNER WITHOUT THE PRIOR WRITTEN CONSENT OF ACCURATE INNOTECH INC.