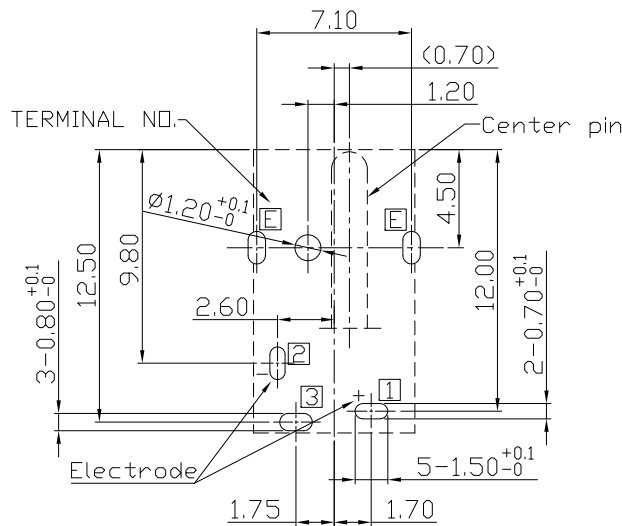
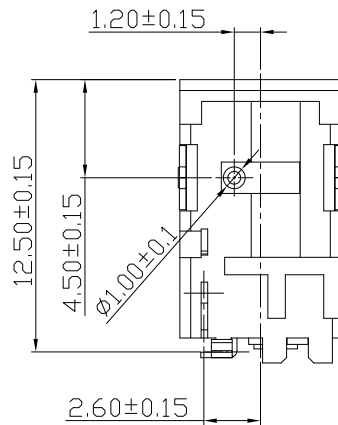
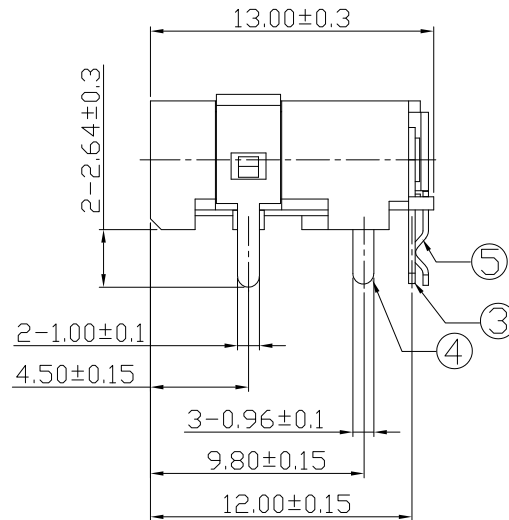
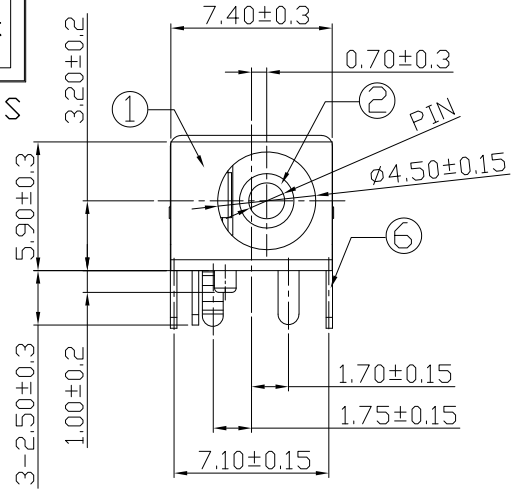




RoHS
Compliant
2002/95/EC

DIMENSIONS



PCB HOLES(Bottom VIEW) t=1.6mm
NOTE:GENERAL TOLERANCE:±0.05mm

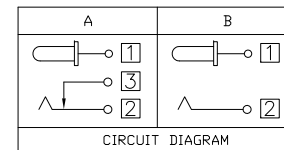
MODEL CODE:

DCB0-0030C- A G PB BK S 0 3

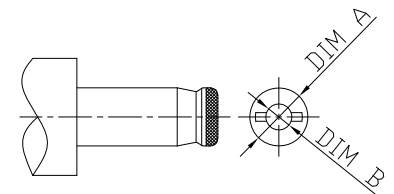
- (1) (2) (3)(4) (5) (6) (7)(8) (9)
 (1):Series type:DIP DC POWER JACK.
 (2):Series No.
 (3):Schematic option: A , B
 (4):Center pin diameter:
 G=1.65
 (5):Material of housing:
 PB=PBT
 (6):Housing color:
 BK=Black (Standard)
 (7):Terminal plating
 S=Silver(Ag) (Ag 8u")
 (8):Special option:
 0=No special option
 (9):Packing mode:
 3=Plastic box packing

SPECIFICATION:

- Rating : DC 20V 3A;
- Contact resistance: $\leq 30m\Omega$;
After test: $\leq 50m\Omega$
- Insulation resistance: $\geq 100M\Omega$ (DC500V);
After test: $\geq 50M\Omega$
- Withstand voltage: 500VAC ;
- Insertion and extraction force: 3-30N;
- life test: 5,000 cycles;
- Operation temperature range:-20°C~70°C;
- Preservative temperature range:-40°C~85°C;



Model No.	G
CENTER PIN	1.65
DIM A	4.0±0.05
DIM B	1.75 ^{+0.10} _{-0.00}



DC MATE PLUG

○: ITEM NO. □: TERMINAL NO.

NO.	PARTS	MATERIAL	Q'TY	FINISHING	TOLERANCE	ANGLES	UNITS
⑥	Shield plate	Brass t=0.30	1	Ag plating			mm
⑤	Shunt terminal	Brass t=0.25	1	Ag plating	.X ±0.38	X ±5°	MAT'L
④	Tip spring	Phosphor bronze t=0.30	1	Ag plating	.XX ±0.30	.X ±3°	SEE NOTE
③	Center pin terminal	Phosphor bronze t=0.30	1	Ag plating	.XXX ±0.15	.XX ±2°	FINISH
②	Center pin	Brass	1	Ni plating			SEE NOTE
①	Housing	PBT UL94V-0	1	Black			Q'TY

THESE DRAWINGS AND SPECIFICATIONS ARE THE PROPERTY OF ACCURATE INNOTECH INC AND SHALL NOT BE REPRODUCED, COPIED OR USED IN ANY MANNER WITHOUT THE PRIOR WRITTEN CONSENT OF ACCURATE INNOTECH INC.

雅安科技有限公司 ACCURATE INNOTECH INC.			
TITLE: DIP DC POWER JACK		PART NO.: DCB0-0030C	
DR: Ricky 2019/04/11		DWG NO.: AB0-0030C	
CHKD: Ricky 2019/04/11		SCALE 1:1	SHEET 1/1
APPD:		REV. A	CUSTOMER DRAWING