



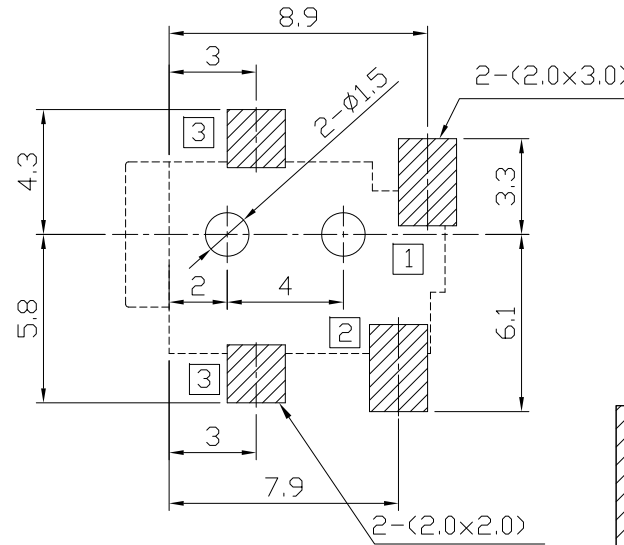
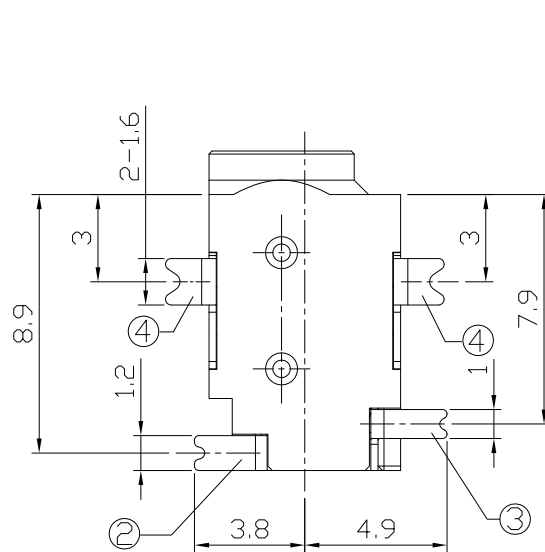
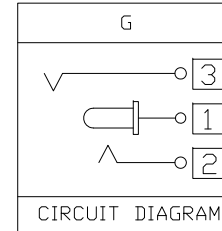
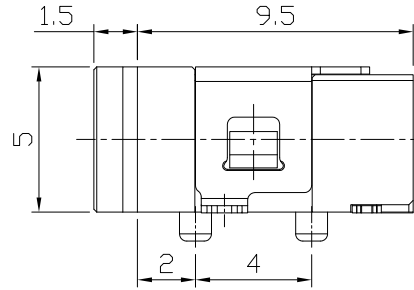
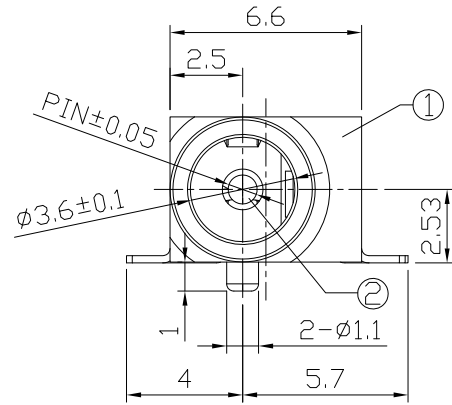
RoHS Compliant
2002/95/EC

REV.	ECN. NO.	APPD.

Model No.	C	E
CENTER PIN	∅1.0	∅1.3

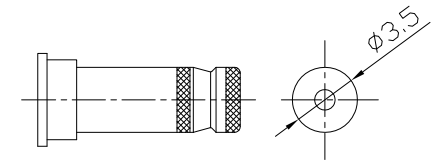
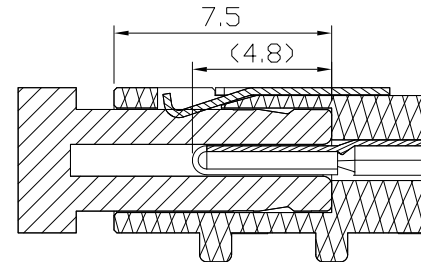
MODEL CODE:
DCB0-0031M-G □ 10 BK S 0 1
(1) (2) (3) (4) (5) (6) (7) (8) (9)
(1):Series type:SMD DC POWER JACK.
(2):Series No.
(3):Schematic option: G
(4):Center pin diameter:
C=∅1.0, E=∅1.3
(5):Material of housing:
10T=PA10T
(6):Housing color:
BK=Black(Standard)
(7):Terminal plating:
S=Silver(Ag)
(8):Special option:
0=No special option
(9):Packing mode:
1=Reel packing

DIMENSIONS



Specification:

- Rating : DC 30V 1.5A;
- Contact resistance: ≤30mΩ;
After test: ≤50mΩ
- Insulation resistance: ≥100MΩ(250VDC);
After test: ≥50MΩ
- Withstand voltage: 250VAC ;
- Insertion and extraction force: 3N~30N;
- life test: 5000cycles min;
- Operation temperature range: -20°C~70°C;
- Preservation temperature range: -40°C~85°C;



PCB HOLES(TOP VIEW) t=1.0mm
NOTE:GENERAL TOLERANCE:±0.05mm

Plug Matching Diagram

DC MATE PLUG

○: ITEM NO. □: TERMINAL NO.

NO.	PARTS	MATERIAL	Q'TY	FINISHING	TOLERANCE	ANGLES	UNITS mm	雅安科技有限公司 ACCURATE INNOTECH INC.			
④	Tip spring II	③ Copper Alloy	1	Silver plating	±0.3	±2'	MAT'L	TITLE: SMD DC POWER JACK		PART NO.: DCB0-0031M	
③	Tip spring I	② Copper Alloy	1	Silver plating			SEE NOTE	DR: <i>Ricky</i> 2018/06/13		DWG NO.: AB0-0031M	
②	Center pin	① Copper Alloy	1	Silver plating			SEE NOTE	CHKD: <i>Ricky</i> 2018/06/13		SCALE SHEET REV. CUSTOMER 1:1 1/1 A DRAWING	
①	Housing	Hi-Tem. Thermoplastic	1				Q'TY	APPD:			
<small>THESE DRAWINGS AND SPECIFICATIONS ARE THE PROPERTY OF ACCURATE INNOTECH INC AND SHALL NOT BE REPRODUCED, COPIED OR USED IN ANY MANNER WITHOUT THE PRIOR WRITTEN CONSENT OF ACCURATE INNOTECH INC.</small>											