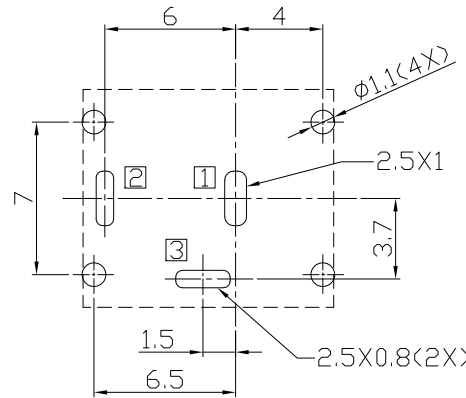
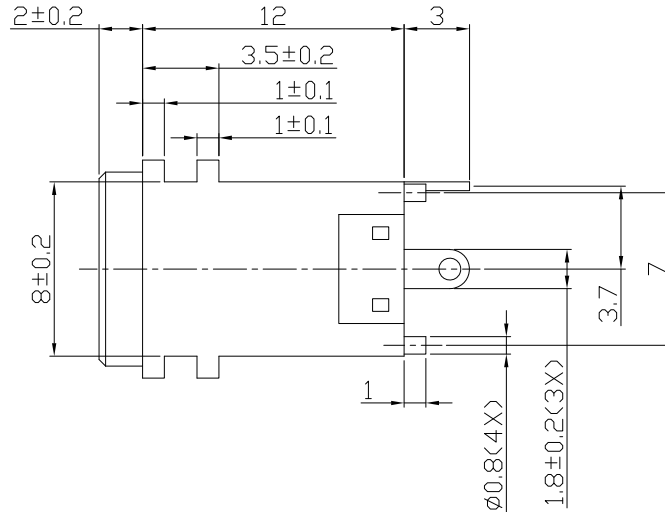
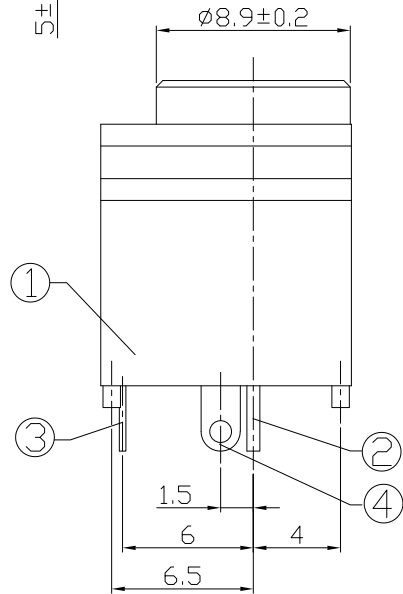
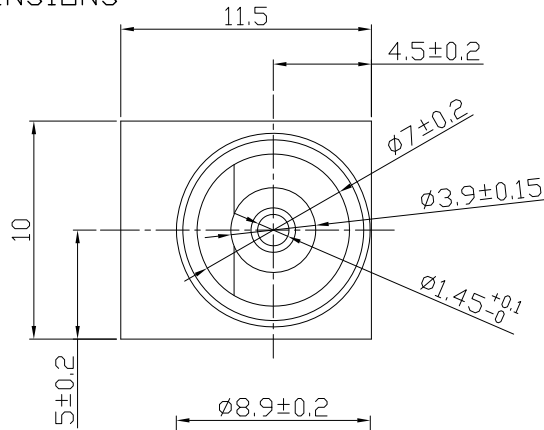




RoHS
Compliant
2002/95/EC

| REV. | ECN. NO. | APPD. |
|------|----------|-------|
| | | |
| | | |

DIMENSIONS



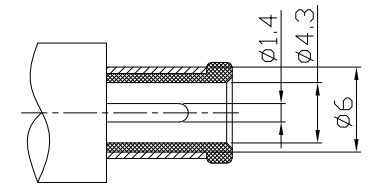
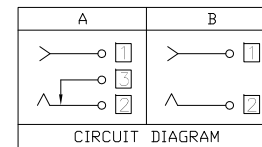
RECOMMENDED P.C.B. LAYOUT
UNSPECIFIED TOLERANCE:±0.05
(BOTTOM VIEW)

MODEL CODE:

DCB0-00370- A F PB BK S 0 4
(1) (2) (3)(4) (5) (6) (7)(8) (9)
(1):Series type:DIP DC POWER JACK.
(2):Series No.
(3):Schematic option: A , B
(4):Center pin diameter:
F=φ1.45
(5):Material of housing:
PB=PBT 66=PA66
(6):Housing color:
BK=Black (Standard)
(7):Terminal plating
S=Silver(Ag)
(8):Special option:
0=No special option
(9):Packing mode:
4=Bag packing

SPECIFICATION:

- Rating : DC 30V 2A;
- Contact resistance: ≤30mΩ;
After test:≤50mΩ
- Insulation resistance: ≥100MΩ (DC500V);
After test:≥50MΩ
- Withstand voltage: 500VAC ;
- Insertion and extraction force: 3-30N;
- life test: 5,000 cycles;
- Operation temperature range:-20°C~70°C;
- Preservative temperature range:-40°C~85°C;



○: ITEM NO. □: TERMINAL NO.

| NO. | PARTS | MATERIAL | Q'TY | FINISHING | TOLERANCE | ANGLES | UNITS | 雅安科技有限公司 ACCURATE INNOTECH INC. | | | | | |
|-----|------------------|-----------------------|------|----------------|-----------|--------|-------|--|--|------------------------|-------|------|------------------|
| ④ | Shunt terminal ③ | Brass t=0.4 | 1 | Silver plating | ±0.3 | ±2° | mm | TITLE: DIP DC POWER JACK | | PART NO.: DCB0-00370 | | | |
| ③ | Tip spring ② | Phosphor bronze t=0.3 | 1 | Silver plating | | | | DR: Ricky 2019/04/12 | | DWG NO.: AB0-00370 | | | |
| ② | Center pin ① | Phosphor bronze t=0.6 | 1 | Silver plating | | | | FINISH SEE NOTE | | CHKD: Ricky 2019/04/12 | | | |
| ① | Housing | PBT PA66 | 1 | Black | | | | Q'TY | | APPD: | | | |
| | | | | | | | | <small>THESE DRAWINGS AND SPECIFICATIONS ARE THE PROPERTY OF ACCURATE INNOTECH INC AND SHALL NOT BE REPRODUCED, COPIED OR USED IN ANY MANNER WITHOUT THE PRIOR WRITTEN CONSENT OF ACCURATE INNOTECH INC.</small> | | SCALE | SHEET | REV. | CUSTOMER DRAWING |
| | | | | | | | | | | 1:1 | 1/1 | A | |