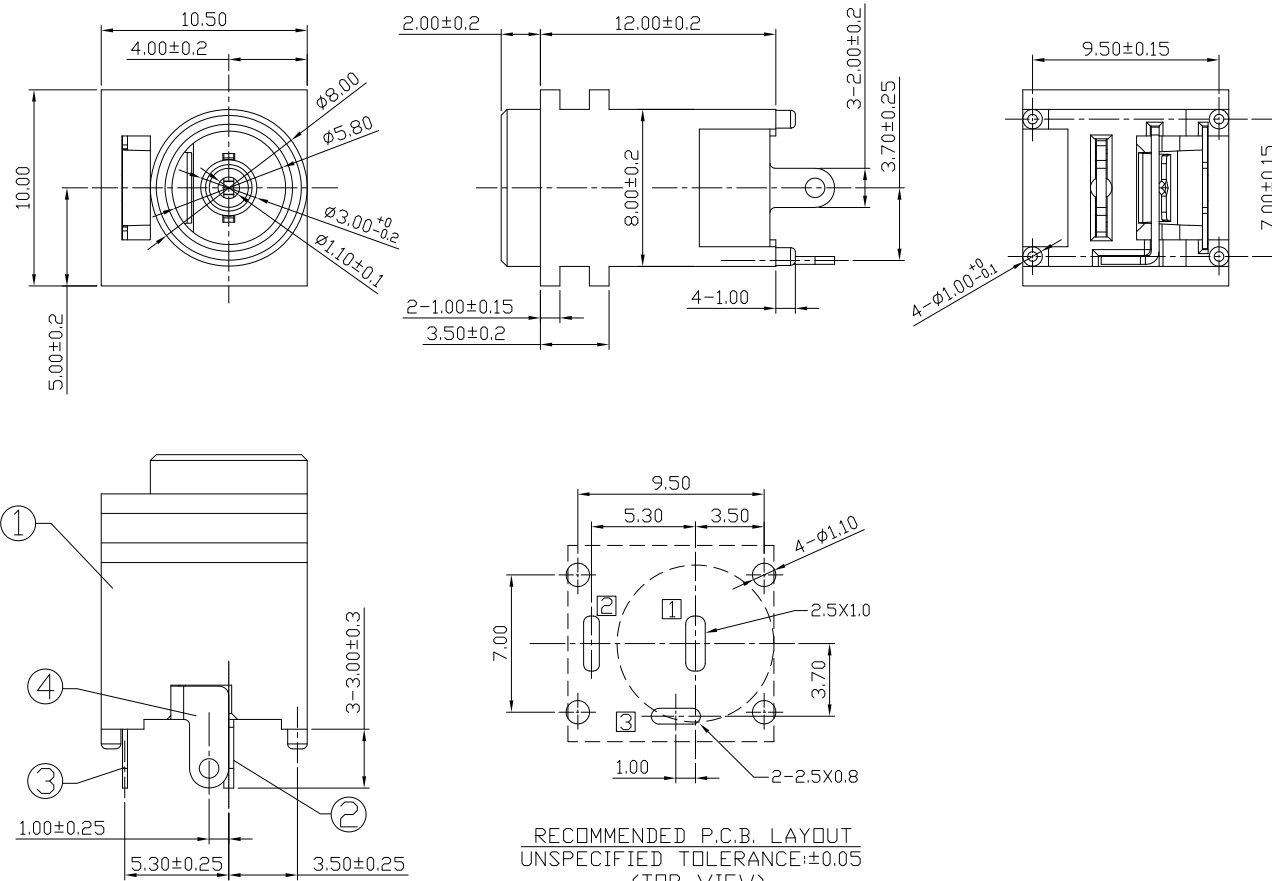




RoHS Compliant
2002/95/EC

REV.	ECN. NO.	APPD.

DIMENSIONS



RECOMMENDED P.C.B. LAYOUT
UNSPECIFIED TOLERANCE:±0.05
(TOP VIEW)

MODEL CODE:

DCB0-0037E- A C 66 BK M 0 4

(1) (2) (3)(4)(5) (6)(7) (8) (9)

(1):Series type:DIP DC POWER JACK.

(2):Series No.

(3):Schematic option: A

(4):Center pin diameter:

C=∅1.0

(5):Material of housing:

66=PA66

(6):Housing color:

BK=Black

(7):Terminal plating:

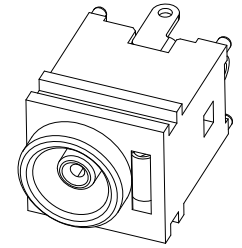
M=Matte Tin Plating

(8):Special option:

0=No special option

(9):Packing mode:

4=Bag Packing



3D VIEW

Specification:

1.Rating: DC 24V 3A.

2.Contact resistance: ≤30mΩ

After life test: ≤50mΩ

3.Insulation resistance: ≥100MΩ (500VDC).

After life test: ≥50MΩ

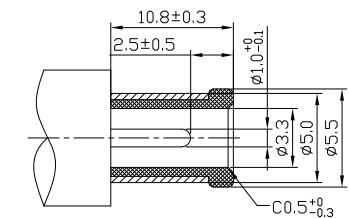
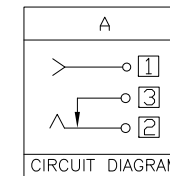
4.Withstand voltage: 500VAC.

5.Insertion and extraction force: 3N~30N.

6.life test: 5000cycles min.

7.□peration temperature range: -20℃~70℃.

8.Preservative temperature range: -40℃~85℃.



DC MATE PLUG

○: ITEM NO. □: TERMINAL NO.

NO.	PARTS	MATERIAL	Q'TY	FINISHING	TOLERANCE	ANGLES	UNITS	雅安科技有限公司 ACCURATE INNOTECH INC.				
					.X ±0.50	X° ±5°	mm					
④	Shunt terminal ③	Brass t=0.4	1	MATTE Tin PLATING	.XX ±0.30	.X° ±3°	MAT'L	TITLE:	PART NO.:			
③	Tip spring ②	Phosphor bronze t=0.25	1	MATTE Tin PLATING	.XXX ±0.15	.XX° ±2°	SEE NOTE	DR:	DCB0-0037E			
②	Center pin ①	Phosphor bronze t=0.5	1	MATTE Tin PLATING	THESE DRAWINGS AND SPECIFICATIONS ARE THE PROPERTY OF ACCURATE INNOTECH INC AND SHALL NOT BE REPRODUCED, COPIED OR USED IN ANY MANNER WITHOUT THE PRIOR WRITTEN CONSENT OF ACCURATE INNOTECH INC.			FINISH	DIP DC POWER JACK		DWG NO.:	
①	Housing	PA66	1	Black				SEE NOTE	CHKD:		AB0-0037E	
							Q'TY	APPD:	SCALE	SHEET	REV.	CUSTOMER
									1:1	1/1	A	DRAWING