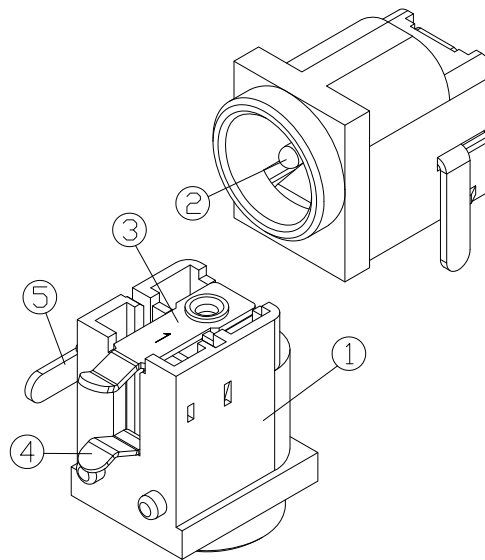
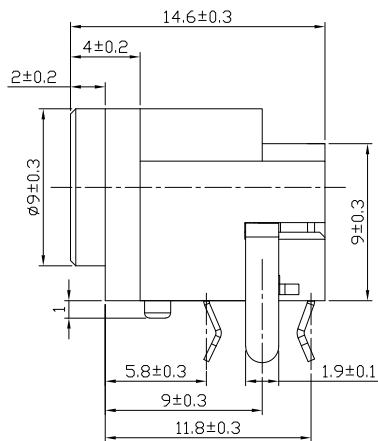
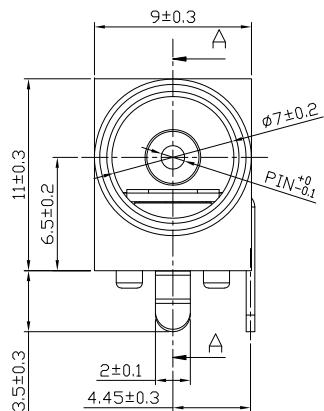




RoHS Compliant
2002/95/EC

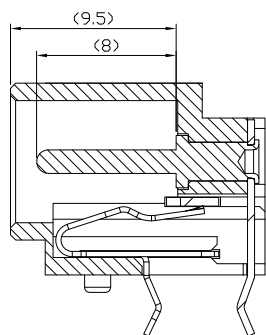
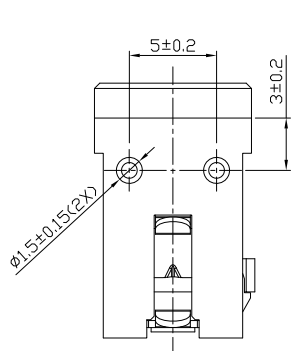
REV.	ECN. NO.	APPD.

DIMENSIONS

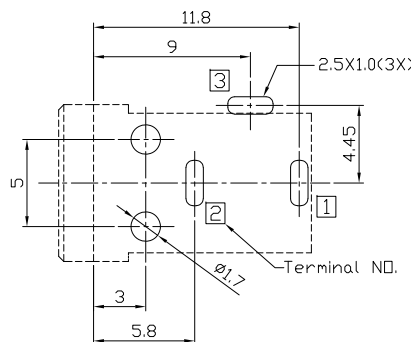


MODEL CODE:
DCB0-0038E- A □ 66 BK S 0 3
(1) (2) (3)(4) (5) (6)(7)(8) (9)
(1):Series type:DIP DC POWER JACK.
(2):Series No.
(3):Schematic option: A
(4):Center pin diameter:
E=φ1.35, G=φ1.65, J=φ2.5
(5):Material of housing:
66=PA66 (Default)
(6):Housing color:
BK=Black
(7):Terminal plating:
S=Silver(Ag)
(8):Special option:
0=No special option
(9):Packing mode:
3=Plastic box packing

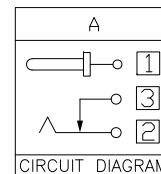
Specification:
1.Rating: DC 20V 3.0A.
2.Contact resistance: ≤30mΩ
After test: ≤50mΩ
3.Insulation resistance: ≥100MΩ (500VDC).
After test: ≥250MΩ
4.Withstanding voltage: 500VAC ,
5.Insertion and extraction force: 3N~30N.
6.life test: 5000cycles min.
7. Operation temperature range: -20℃~70℃
8.Preservative temperature range: -40℃~85℃



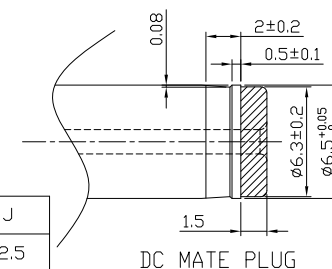
SEC:A-A



RECOMMENDED P.C.B. LAYOUT
UNSPECIFIED TOLERANCE:±0.05
(BOTTOM VIEW)



Model No.	E	G	J
CENTER PIN	φ1.35	φ1.65	φ2.5
DC PLUG O.D.	φ1.4 ^{+0.1}	φ1.7 ^{+0.1}	φ2.55 ^{+0.1}



○: ITEM NO. □: TERMINAL NO.

NO.	PARTS	MATERIAL	Q'TY	FINISHING	TOLERANCE	ANGLES	UNITS
5	Shunt terminal 3	Brass,t=0.5	1	Silver plating	±0.3	±2°	mm
4	Tip spring 2	Phosphor bronze,t=0.3	1	Silver plating			SEE NOTE
3	Center pin terminal	Brass t0.4	1	Silver plating			SEE NOTE
2	Center pin 1	Brass	1	Nickel plating			SEE NOTE
1	Housing	PA66	1	Black			SEE NOTE
							Q'TY

THESE DRAWINGS AND SPECIFICATIONS ARE THE PROPERTY OF ACCURATE INNOTECH INC AND SHALL NOT BE REPRODUCED, COPIED OR USED IN ANY MANNER WITHOUT THE PRIOR WRITTEN CONSENT OF ACCURATE INNOTECH INC.

雅安科技有限公司 ACCURATE INNOTECH INC.			
TITLE: DIP DC POWER JACK		PART NO.: DCB0-0038E	
DR: Ricky 2023/10/24		DWG NO.: AB0-0038E	
CHKD: Ricky 2023/10/24		SCALE	SHEET
APPD:		1:1	1/1
		REV.	CUSTOMER DRAWING
		A	