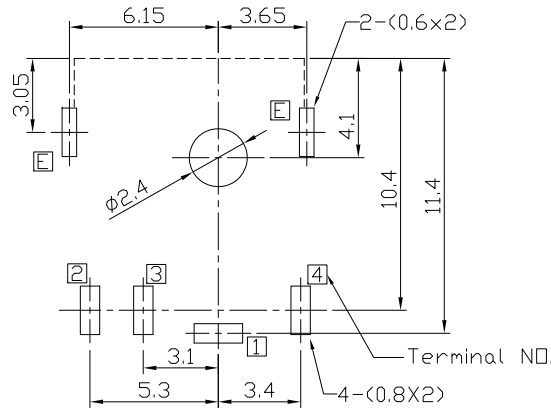
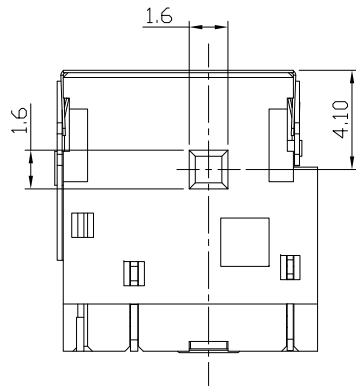
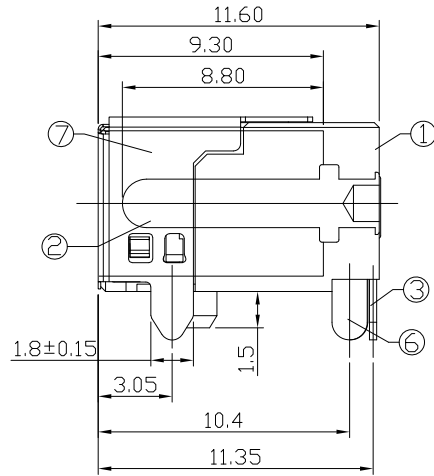
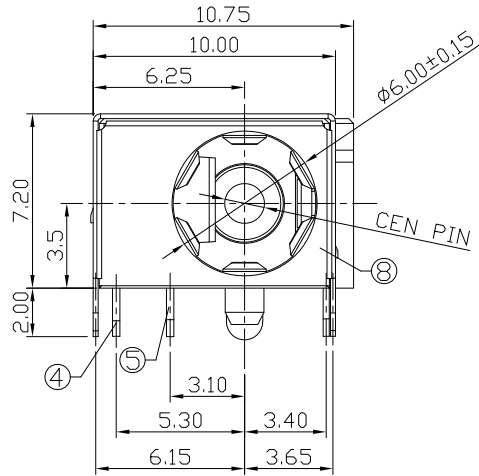




RoHS
Compliant
2002/95/EC

REV.	ECN. NO.	APPD.

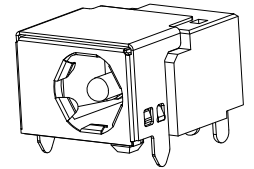
DIMENSIONS



PCB HOLES(BOTTOM VIEW) t=1.6mm
NOTE:GENERAL TOLERANCE:±0.05mm

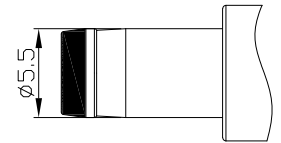
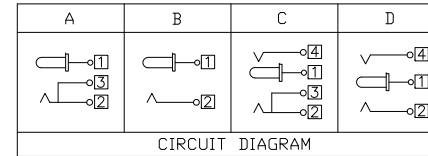
MODEL CODE:

- DCB0-0044L- C □ 9T BK S 0 1
 (1):Series type:DIP DC POWER JACK.
 (2):Series No.
 (3):Schematic option: A , B , C , D
 (4):Center pin diameter:
 G=φ1.65 , H=φ2.0 , J=φ2.5
 (5):Material of housing:
 9T=PA9T (Standard) , 10=PA10T
 (6):Housing color:
 BK=Black(Standard)
 (7):Terminal plating
 S=Silver(Ag=20u")
 (8):Special option:
 0=No special option
 H=Halogen Free
 (9):Packing mode:
 1=Reel packing
 A=Reel packing(□posite)



SPECIFICATION:

- Rating : DC 20V 5A;
- Contact resistance: ≤30mΩ
After test:≤50mΩ
- Insulation resistance: ≥100MΩ (DC500V);
After test:≥50MΩ
- Withstand voltage: 500VAC ;
- Insertion and extraction force: 3-30N;
- life test: 5,000 cycles;
- Operation temperature range:-20°C~70°C;
- Preservative temperature range:-40°C~85°C;



DC MATE PLUG

Model No.	G	H	J
CENTER PIN	φ1.65	φ2.0	φ2.5

○: ITEM NO. □: TERMINAL NO.

NO.	PARTS	MATERIAL	Q'TY	FINISHING
⑧	Shield plate	Stainless steel	1	
⑦	Ground shield	Brass	1	Nickel plating
⑥	Tip spring-2	Phosphor Bronze	1	Silver plating
⑤	Shunt Terminal	Brass	1	Silver plating
④	Tip spring-1	Phosphor Bronze	1	Silver plating
③	Center pin terminal	Brass	1	Silver plating
②	Center pin	Brass	1	Nickel plating
①	Housing	PA9T/PA10T	1	

THESE DRAWINGS AND SPECIFICATIONS ARE THE PROPERTY OF ACCURATE INNOTECH INC AND SHALL NOT BE REPRODUCED, COPIED OR USED IN ANY MANNER WITHOUT THE PRIOR WRITTEN CONSENT OF ACCURATE INNOTECH INC.

TOLERANCE	ANGLES	UNITS	雅安科技有限公司			
.X ±0.50	X ±5°	mm	ACCURATE INNOTECH INC.			
.XX ±0.30	.X ±3°	MAT'L	TITLE:		PART NO.:	
.XXX ±0.15	.XX ±2°	SEE NOTE	DIP DC POWER JACK		DCB0-0044L	
		FINISH	DR: <i>Ricky</i> 2019/04/29		DWG NO.:	
		SEE NOTE	CHKD: <i>Ricky</i> 2019/04/29		AB0-0044L	
		Q'TY	APPD:		SCALE	SHEET
					1:1	1/1
					REV.	CUSTOMER
					A	DRAWING