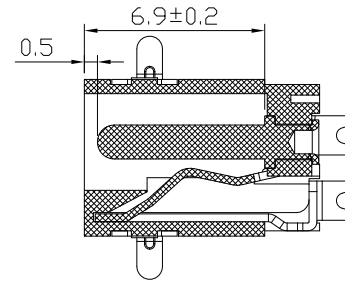
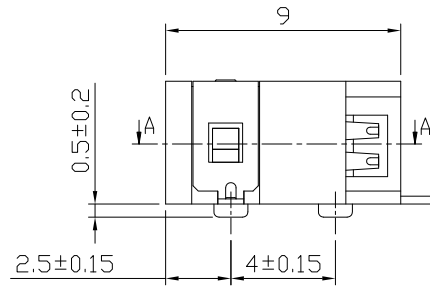
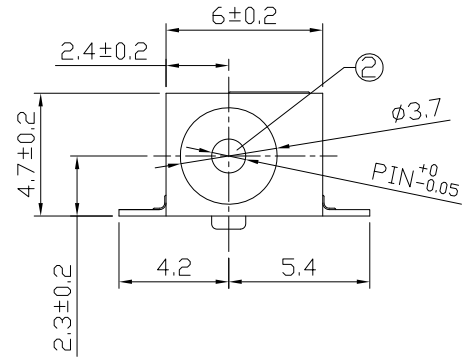




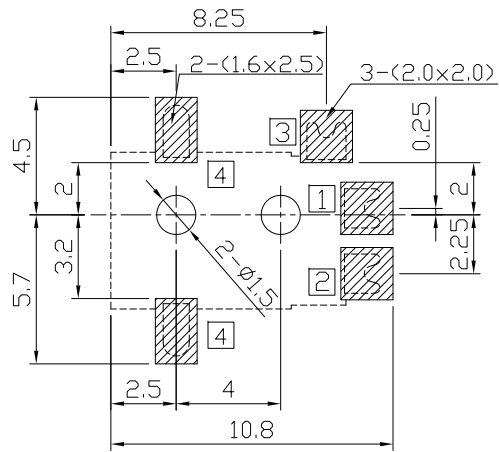
RoHS  
Compliant  
2002/95/EC

REV.	ECN. NO.	APPD.

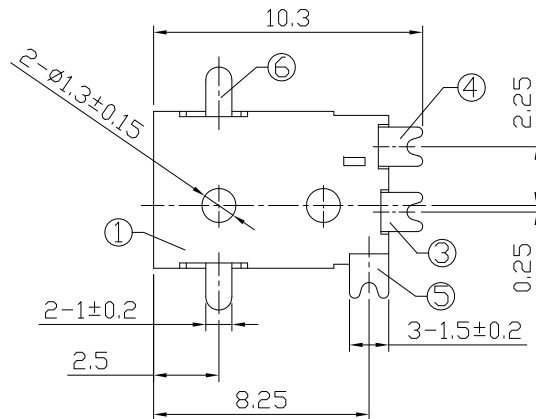
### DIMENSIONS



SECTION A-A



RECOMMENDED P.C.B. LAYOUT  
UNSPECIFIED TOLERANCE:±0.05  
(COPPER-SIDED VIEW)



### MODEL CODE:

DCB0-0045B- A □ LC BK S 0 1

(1) (2) (3)(4) (5) (6)(7)(8) (9)

(1):Series type:SMD DC POWER JACK.

(2):Series No.

(3):Schematic option: A,B

(4):Center pin diameter:

C=φ1.0, E=φ1.3

(5):Material of housing:

LC=LCP(Standard)

(6):Housing color:

BK=Black

(7):Terminal plating:

S=Silver(Ag)

(8):Special option:

0=No special option

(9):Packing mode:

1=Reel packing

### Specification:

1.Rating : DC 12V 1A.

2.Contact resistance: ≤30mΩ

After test:≤50mΩ

3.Insulation resistance: ≥100MΩ (500VDC).

After test:≥50MΩ

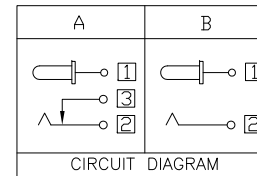
4.Withstanding voltage: 500VAC.

5.Insertion and extraction force: 3N~30N.

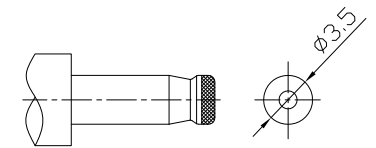
6.life test: 5000cycles min.

7.Operate temperature range:-20°C~70°C

8.Preservative temperature range:-40°C~85°C



Model No.	C	E
CENTER PIN	φ1.0	φ1.3



DC MATE PLUG

○: ITEM NO. □: TERMINAL NO.

NO.	PARTS	MATERIAL	Q'TY	FINISHING	TOLERANCE	ANGLES	UNITS
⑥	Shield plate	Brass t0.2	1	Silver plating			mm
⑤	Shunt terminal ③	Brass t0.25	1	Silver plating	±0.3	±2°	MAT'L
④	Tip spring ②	Beryllium bronze t0.3	1	Silver plating			SEE NOTE
③	Center pin terminal ①	Brass t0.2	1	Silver plating			FINISH
②	Center pin ①	Brass	1	Nickel plating			SEE NOTE
①	Housing	LCP	1	Black			Q'TY

THESE DRAWINGS AND SPECIFICATIONS ARE THE PROPERTY OF ACCURATE INNOTECH INC AND SHALL NOT BE REPRODUCED, COPIED OR USED IN ANY MANNER WITHOUT THE PRIOR WRITTEN CONSENT OF ACCURATE INNOTECH INC.

雅安科技有限公司 ACCURATE INNOTECH INC.			
TITLE: SMD DC POWER JACK		PART NO.: DCB0-0045B	
DR: Ricky 2018/06/20		DWG NO.: AB0-0045B	
CHKD: Ricky 2018/06/20		SCALE	SHEET
APPD:		1:1	1/1
		REV.	CUSTOMER DRAWING
		A	