



RoHS
Compliant
2002/95/EC

Halogen Free

REV.	ECN. NO.	APPD.

MODEL CODE:

DCB0-0050B- A □ 10 BK M □ 1

(1) (2) (3)(4)(5) (6)(7)(8) (9)

(1):Series type:DIP DC POWER JACK.

(2):Series No.

(3):Schematic option: A,B

(4):Center pin diameter:

H=φ2.0, J=φ2.5

(5):Material of housing:

10=PA10T

(6):Housing color:

BK=Black

(7):Terminal plating:

M=Matte Tin

(8):Special option:

0=No special option(For J)

1=Cover Color Yellow(For H)

(9):Packing mode:

1=Reel packing

Specification:

1.Rating: DC 20V 5A;

2.Contact resistance: ≤50mΩ;

After test: ≤100mΩ

3.Insulation resistance: ≥100MΩ(500VDC);

After test: ≥50MΩ

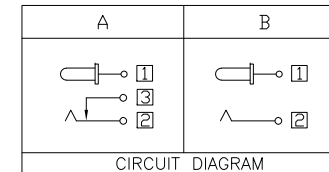
4.Withstand voltage: 500VAC;

5.Insertion and extraction force: 3N~30N;

6.life test: 5000cycles min;

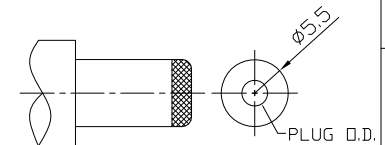
7.Operate temperature range: -20℃~70℃;

8.Preservation temperature range: -40℃~85℃;



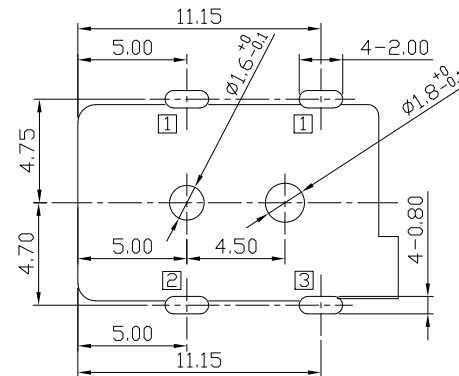
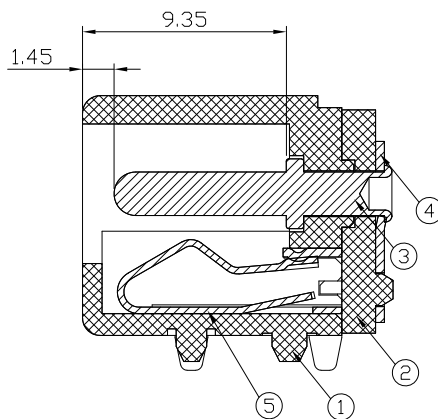
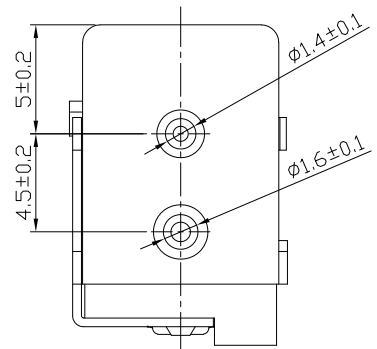
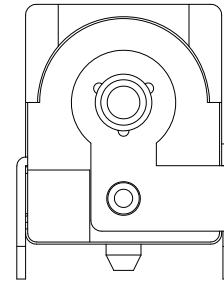
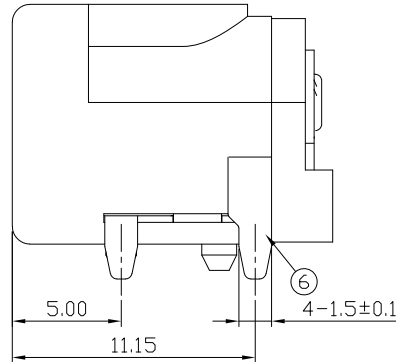
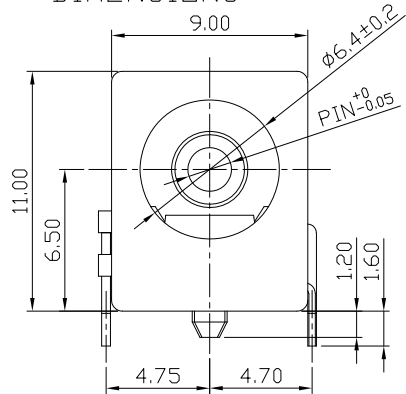
CIRCUIT DIAGRAM

Model No.	H	J
CENTER PIN	φ2.0	φ2.5
DC PLUG D.D.	φ2.05 ^{+0.1} ₀	φ2.55 ^{+0.1} ₀



DC MATE PLUG

DIMENSIONS



RECOMMENDED PCB LAYOUT (TOP VIEW)
TOLERANCE:±0.05mm

○: ITEM NO. □: TERMINAL NO.

NO.	PARTS	MATERIAL	Q'TY	FINISHING	TOLERANCE	ANGLES	UNITS
⑥	Shunt terminal ③	Brass t=0.4	1	Matte Tin plating			mm
⑤	Tip spring ②	Phosphor bronze t=0.3	1	Matte Tin plating	.X ±0.38	X.* ±5°	MAT'L
④	Center pin terminal ①	Brass t=0.4	1	Matte Tin plating	.XX ±0.30	.X.* ±3°	SEE NOTE
③	Center pin ①	Brass	1	Ni plating	.XXX ±0.15	.XX.* ±2°	FINISH
②	Cover	PA9T	1	Black			SEE NOTE
①	Housing	PA9T	1	Black			Q'TY

THESE DRAWINGS AND SPECIFICATIONS ARE THE PROPERTY OF ACCURATE INNOTECH INC AND SHALL NOT BE REPRODUCED, COPIED OR USED IN ANY MANNER WITHOUT THE PRIOR WRITTEN CONSENT OF ACCURATE INNOTECH INC.

雅安科技有限公司 ACCURATE INNOTECH INC.			
TITLE: DIP DC POWER JACK		PART NO.: DCB0-0050B	
DR: Ricky 2023/10/25		DWG NO.: AB0-0050B	
CHKD: Ricky 2023/10/25		SCALE	SHEET
APPD:		1:1	1/1
		REV.	CUSTOMER DRAWING
		A	