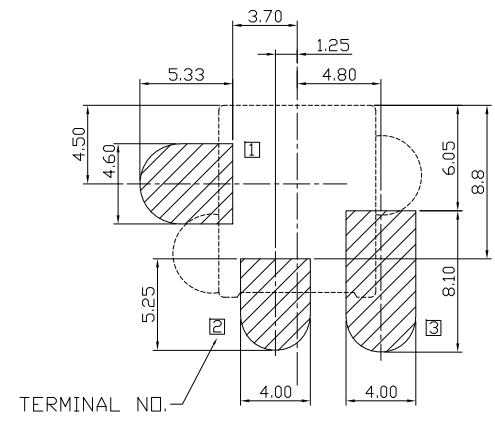
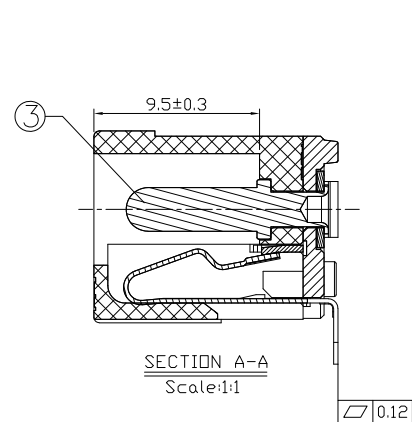
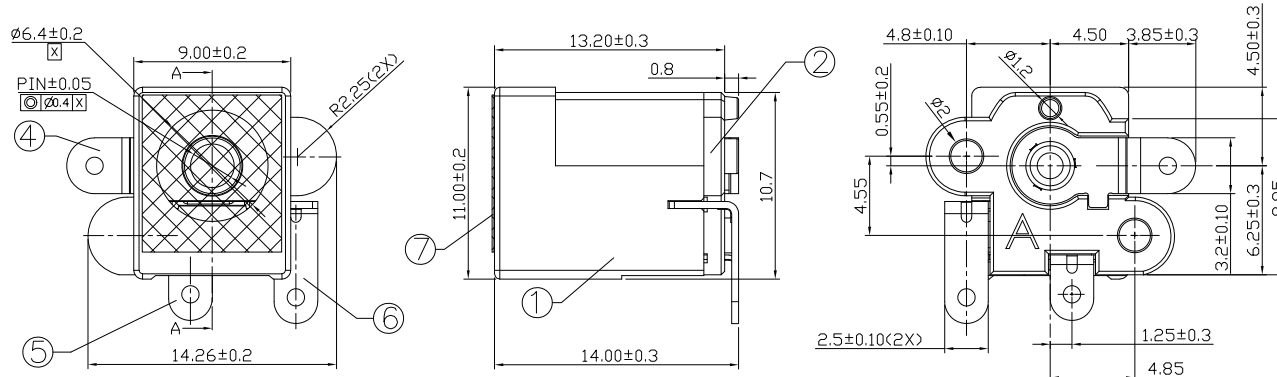




RoHS Compliant
2002/95/EC

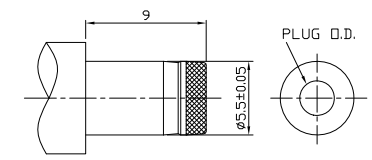
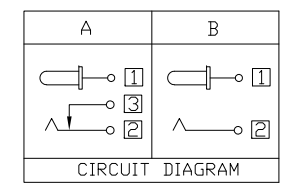
Halogen Free

DIMENSIONS



MODEL CODE:
DCB0-0112B - A □ 10 BK I 0 1
(1) (2) (3)(4) (5)(6) (7)(8) (9)
(1):Series type:SMD DC POWER JACK.
(2):Series No.
(3):Schematic option: A,B
(4):Center pin diameter:
H=φ2.0, I=φ2.35, J=φ2.5
(5):Material of housing:
9T=PA9T & 10=PA10T
(6):Housing color:
BK=Black
(7):Terminal plating:
T=Tin(Sn)
(8):Special option:
0=No special option
(9):Packing mode:
1=Reel packing

Specification:
1.Rating: DC 20V 2.5A;
2.Contact resistance: ≤30mΩ;
After test:≤100mΩ
3.Insulation resistance: ≥100MΩ (500VDC);
After test: ≥50MΩ
4.Withstand voltage: 500VAC;
5.Insertion and extraction force: 3N~30N;
6.life test: 5000cycles;
7.Operaton temperature range: -20℃~70℃
8.Preservative temperature range: -40℃~85℃



Model No.	H	I	J
CENTER PIN	φ2.0	φ2.35	φ2.5
PLUG φ.D.	φ2.05 ^{+0.10} _{-0.00}	φ2.4 ^{+0.10} _{-0.00}	φ2.55 ^{+0.10} _{-0.00}

DC MATE PLUG

○: ITEM NO. □: TERMINAL NO.

NO.	PARTS	MATERIAL	Q'TY	FINISHING
⑦	Mylar		1	
⑥	Shunt terminal ③	Copper Alloy	1	Tin Plating
⑤	Tip spring ②	Copper Alloy	1	Tin Plating
④	Center pin terminal ①	Copper Alloy	1	Tin Plating
③	Center pin	Copper Alloy	1	Ni Plating
②	Cover	High-Temp Thermoplastic	1	Black
①	Housing	High-Temp Thermoplastic	1	Black

TOLERANCE	ANGLES	UNITS	雅安科技有限公司 ACCURATE INNOTECH INC.			
.X ±0.50	X° ±5°	mm	TITLE: SMD DC POWER JACK		PART NO.: DCB0-0112B	
.XX ±0.30	.X° ±3°	MAT'L	DR: Ricky 2023/10/20		DWG NO.: AB0-0112B	
.XXX ±0.15	.XX° ±2°	SEE NOTE	CHKD: Ricky 2023/10/20		SCALE SHEET REV. CUSTOMER	
THESE DRAWINGS AND SPECIFICATIONS ARE THE PROPERTY OF ACCURATE INNOTECH INC AND SHALL NOT BE REPRODUCED, COPIED OR USED IN ANY MANNER WITHOUT THE PRIOR WRITTEN CONSENT OF ACCURATE INNOTECH INC.			APPD:		1:1 1/1 A DRAWING	

REV.	ECN. NO.	APPD.