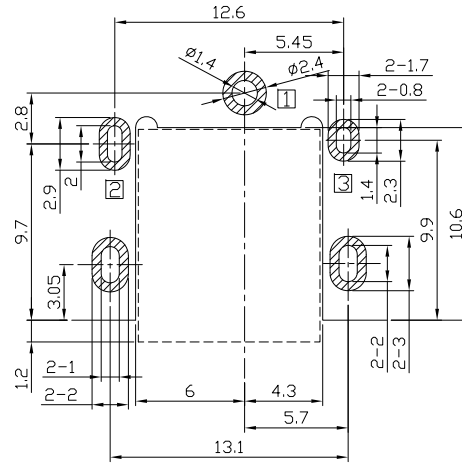
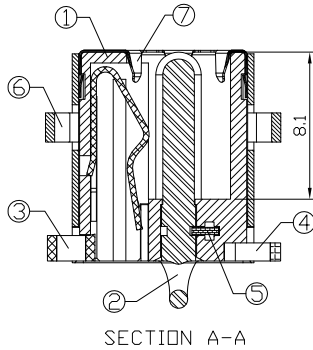
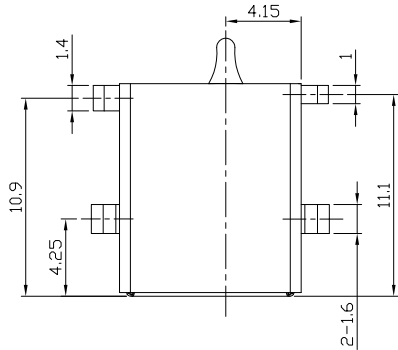
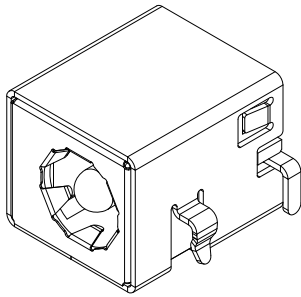




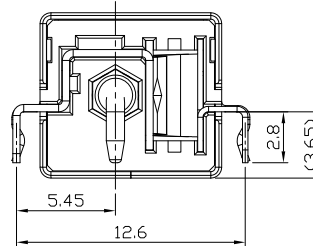
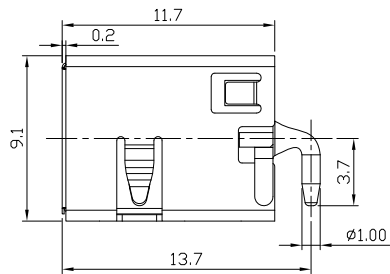
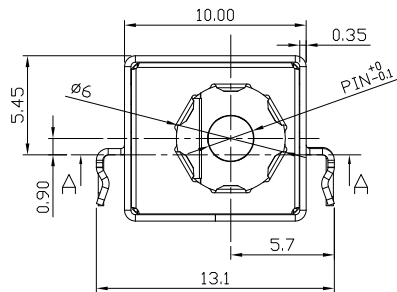
RoHS Compliant
2002/95/EC

REV.	ECN.	NO.	APPD.

DIMENSIONS



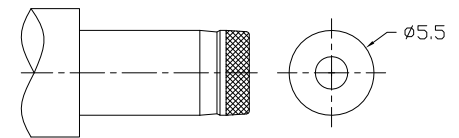
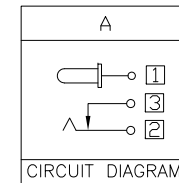
RECOMMENDED P.C.B. LAYOUT
UNSPECIFIED TOLERANCE: ±0.05
(COPPER-SIDED VIEW)



MODEL CODE:
DCB0-0116A- A □ 9T BK S 0 1
(1) (2) (3)(4) (5) (6) (7)(8) (9)
(1):Series type:SMD DC POWER JACK.
(2):Series No.
(3):Schematic option: A
(4):Center pin diameter:
G=φ1.65, H=φ2.0, J=φ2.5
(5):Material of housing:
9T=PA9T(Standard),10=PA10T
(6):Housing color:
BK=Black
(7):Terminal plating:
S=Silver(Ag)
(8):Special option:
0=No special option
H=Housing is Halogen Free.
W=White Reel
L=Blue Reel
(9):Packing mode:
1=Reel packing

SPECIFICATION

- Rating : DC 20V 7A;
- Contact resistance: ≤30mΩ
After life test:≤50mΩ;
- Insulation resistance: ≥100MΩ (DC500V),
After life test:≥50MΩ;
- Withstand voltage: 500VAC ;
- Insertion and extraction force: 3-30N;
- life test: 5,000 cycles;
- Operation temperature range:-20°C~70°C;
- Preservative temperature range:-40°C~85°C;



Model No.	G	H	J
CENTER PIN	φ1.65	φ2.0	φ2.5

DC MATE PLUG

○: ITEM NO. □: TERMINAL NO.

NO.	PARTS	MATERIAL	Q'TY	FINISHING
⑦	Ground terminal	Stainless steel, t0.1	1	
⑥	Shield	Brass, t0.35	1	Nickel plating
⑤	Terminal	Brass, t0.4	1	
④	Shunt terminal ③	Brass, t0.4	1	Silver plating
③	Tip spring ②	Phosphor bronze, t0.3	1	Silver plating
②	Center pin ①	Zinc alloy	1	Nickel plating
①	Housing	PA9T,PA10T UL94V-0	1	Black

THESE DRAWINGS AND SPECIFICATIONS ARE THE PROPERTY OF ACCURATE INNOTECH INC AND SHALL NOT BE REPRODUCED, COPIED OR USED IN ANY MANNER WITHOUT THE PRIOR WRITTEN CONSENT OF ACCURATE INNOTECH INC.

TOLERANCE	ANGLES	UNITS	雅安科技有限公司 ACCURATE INNOTECH INC.			
±0.3	±2°	mm	TITLE: SMD DC POWER JACK		PART NO.: DCB0-0116A	
		MAT'L	DR: <i>Ricky</i> 2018/06/27		DWG NO.: AB0-0116A	
		SEE NOTE	CHKD: <i>Ricky</i> 2018/06/27		SCALE SHEET REV. CUSTOMER 1:1 1/1 A DRAWING	
		FINISH	APPD:			
		SEE NOTE				
		Q'TY				