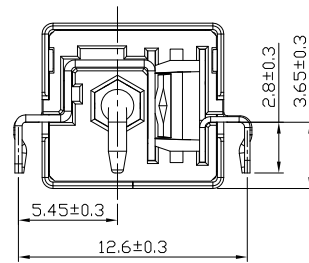
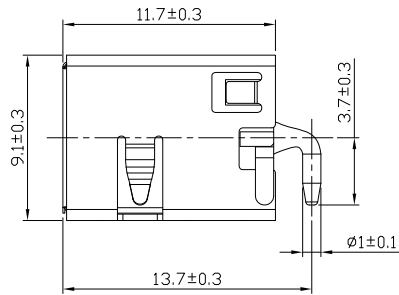
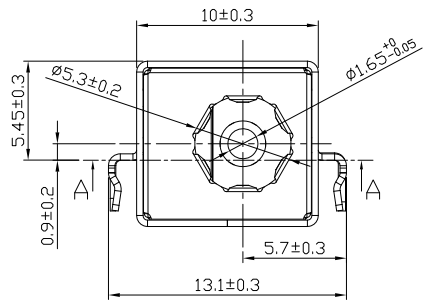
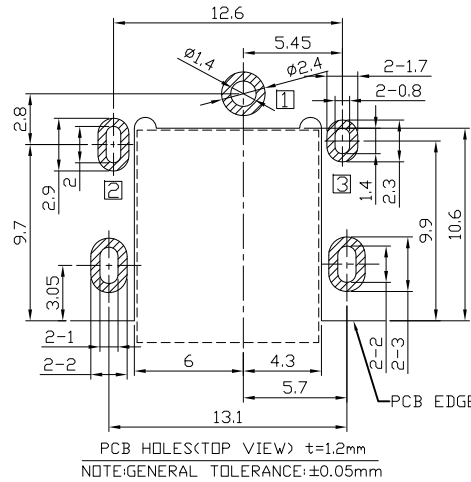
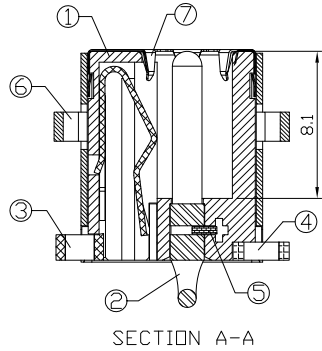
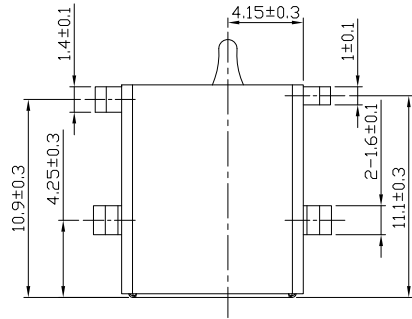
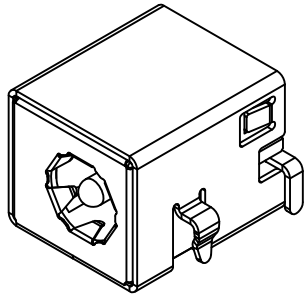




RoHS Compliant
2002/95/EC

REV.	ECN.	NO.	APPD.

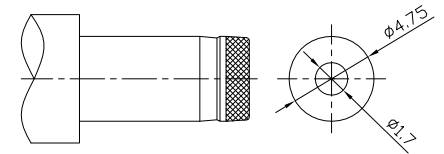
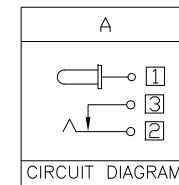
DIMENSIONS



MODEL CODE:
DCB0-0116B- A G 9T BK S W 1
(1) (2) (3)(4) (5) (6) (7)(8) (9)
(1):Series type:SMD DC POWER JACK.
(2):Series No.
(3):Schematic option: A
(4):Center pin diameter:
G=Ø1.65
(5):Material of housing:
9T=PA9T(Standard)
(6):Housing color:
BK=Black(Standard)
(7):Terminal plating:
S=Silver(Ag)
(8):Special option:
W=White Reel
(9):Packing mode:
1=Reel packing

SPECIFICATION

- 1.Rating : DC 20V 7A;
- 2.Contact resistance: ≤30mΩ
After life test:≤50mΩ;
- 3.Insulation resistance: ≥100MΩ (DC500V),
After life test:≥50MΩ;
- 4.Withstand voltage: 500VAC ;
- 5.Insertion and extraction force: 3-30N;
- 6.life test: 5,000 cycles;
- 7.Operation temperature range:-20°C~70°C;
- 8.Preservative temperature range:-40°C~85°C;



○: ITEM NO. □: TERMINAL NO.

NO.	PARTS	MATERIAL	Q'TY	FINISHING
7	Ground terminal	Steel Alloy 0.10t	1	
6	Shield	Copper Alloy 0.35t	1	Ni Plating
5	Terminal	Copper Alloy 0.40t	1	
4	Shunt terminal	Copper Alloy 0.40t	1	Ag Plating
3	Tip spring	Copper Alloy 0.30t	1	Ag Plating
2	Center pin	Zn Alloy	1	Ni Plating
1	Housing	Hi-Tem. Thermoplastic	1	Black

THESE DRAWINGS AND SPECIFICATIONS ARE THE PROPERTY OF ACCURATE INNOTECH INC AND SHALL NOT BE REPRODUCED, COPIED OR USED IN ANY MANNER WITHOUT THE PRIOR WRITTEN CONSENT OF ACCURATE INNOTECH INC.

TOLERANCE	ANGLES	UNITS	雅安科技有限公司			
±0.3	±2°	mm	ACCURATE INNOTECH INC.			
		MAT'L	TITLE:	PART NO.:		
		SEE NOTE	SMD DC POWER JACK	DCB0-0116B		
		FINISH	DR:	DWG NO.:		
		SEE NOTE	Ricky 2018/06/27	AB0-0116B		
		Q'TY	CHKD:	SCALE		
			Ricky 2018/06/27	1:1	SHEET	REV.
			APPD:	1/1	A	CUSTOMER DRAWING