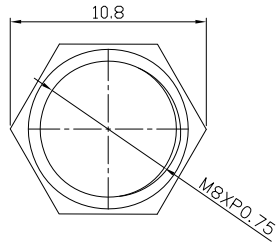
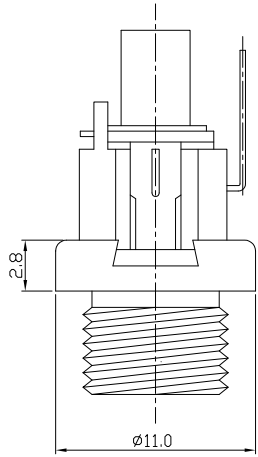




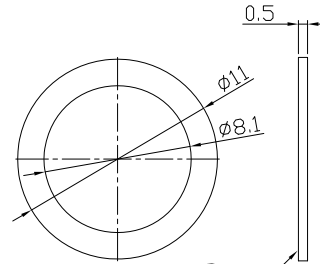
RoHS Compliant
2002/95/EC

REV.	ECN. NO.	APPD.

DIMENSIONS



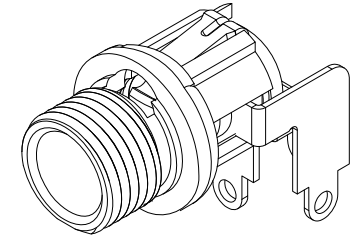
Nut



Washer

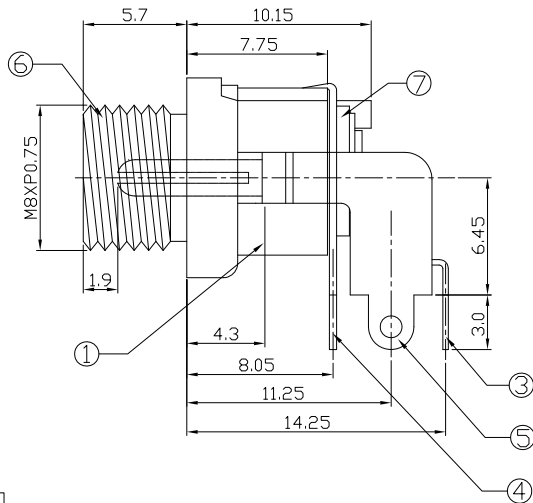
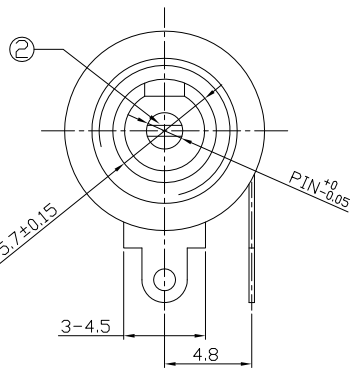
MODEL CODE:

- DCB0-0124M- A □ PB BK S 0 4
 (1) (2) (3)(4) (5) (6) (7)(8) (9)
 (1):Series type:DIP DC POWER JACK.
 (2):Series No.
 (3):Schematic option: A , B
 (4):Center pin diameter:
 H=ø2.0 , J=ø2.5
 (5):Material of housing:
 PB=PBT (Standard)
 (6):Housing color:
 BK=Black
 (7):Terminal plating
 S=Silver(Ag)
 (8):Special option:
 0=No special option
 D=Do not spare parts
 (9):Packing mode:
 4=Bag packing

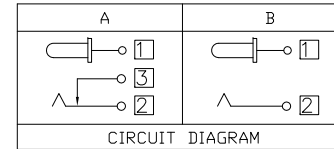
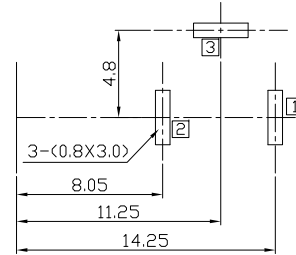


SPECIFICATION:

- Rating : DC 30V 3A;
- Contact resistance: ≤30mΩ;
After test:≤50mΩ
- Insulation resistance: ≥100MΩ (DC500V);
After test:≥50MΩ
- Withstand voltage: 500VAC ;
- Insertion and extraction force: 3-30N;
- life test: 5,000 cycles;
- Operation temperature range:-20°C~70°C;
- Preservative temperature range:-40°C~85°C;



RECOMMENDED P.C.B. LAYOUT
UNSPECIFIED TOLERANCE:±0.05
(COPPER-SIDED VIEW)



DC MATE PLUG

Model No.	H	J
CENTER PIN	ø2.0	ø2.5

○: ITEM NO. □: TERMINAL NO.

⑨	Washer-2	Brass	1	Ni40u"Min. Plating
⑧	Nut	Brass	1	Ni40u"Min. Plating
⑦	Washer-1	Bakelite	2	
⑥	Bushing	Brass	1	CuSn10u"Min. Plating
⑤	Shunt Terminal ③	Phosphor Bronze	1	Ag:8u"Min. Plating
④	Tip Spring ②	Phosphor Bronze	1	
③	Center pin contact ①	Brass	1	
②	Center pin	Brass	1	CuSn10u"Min. Plating
①	Housing	PBT UL94V-0	1	Black
NO.	PARTS	MATERIAL	Q'TY	FINISHING

TOLERANCE	ANGLES	UNITS	mm
.X ±0.50	X ±5°	MAT'L	SEE NOTE
.XX ±0.30	.X ±3°	FINISH	SEE NOTE
.XXX ±0.15	.XX ±2°	Q'TY	

THESE DRAWINGS AND SPECIFICATIONS ARE THE PROPERTY OF ACCURATE INNOTECH INC AND SHALL NOT BE REPRODUCED, COPIED OR USED IN ANY MANNER WITHOUT THE PRIOR WRITTEN CONSENT OF ACCURATE INNOTECH INC.

雅安科技有限公司 ACCURATE INNOTECH INC.			
TITLE:	PART NO.:		
DIP DC POWER JACK	DCB0-0124M		
DR: Ricky 2019/05/03	DWG NO.:		
CHKD: Ricky 2019/05/03	AB0-0124M		
APPD:	SCALE	SHEET	REV. CUSTOMER DRAWING
	1:1	1/1	A