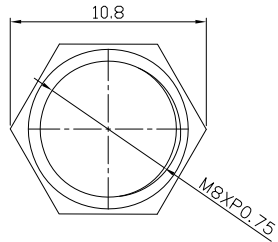
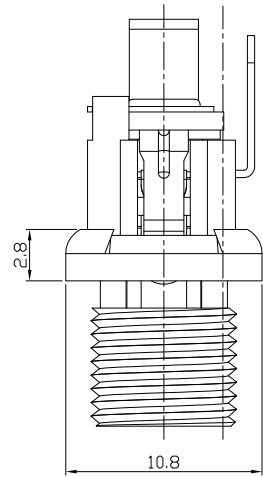




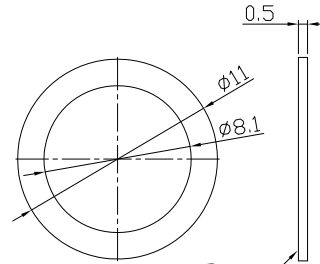
RoHS
Compliant
2002/95/EC

| REV. | ECN. NO. | APPD. |
|------|----------|-------|
| | | |
| | | |
| | | |

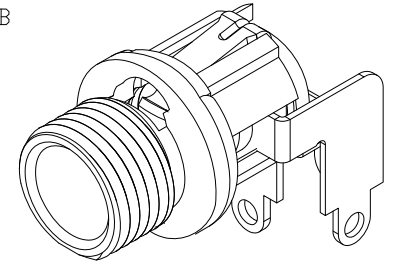
DIMENSIONS



Nut



Washer



MODEL CODE:

DCB0-0125M- A □ PB BK S 0 4

(1) (2) (3)(4) (5) (6) (7)(8) (9)

(1):Series type:DIP DC POWER JACK.

(2):Series No.

(3):Schematic option: A , B

(4):Center pin diameter:

H=∅2.0 , J=∅2.5

(5):Material of housing:

PB=PBT (Standard)

(6):Housing color:

BK=Black

(7):Terminal plating

S=Silver(Ag)

(8):Special option:

0=Mate nut

D=No nut

B=Mate nuts to be assembled.

(9):Packing mode:

4=Bag packing

SPECIFICATION:

1.Rating : DC 30V 3A;

2.Contact resistance: ≤30mΩ;

After test:≤50mΩ

3.Insulation resistance: ≥100MΩ (DC500V);

After test:≥50MΩ

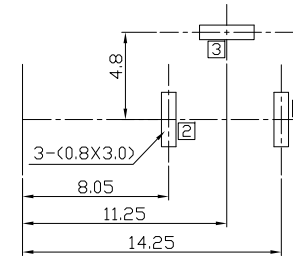
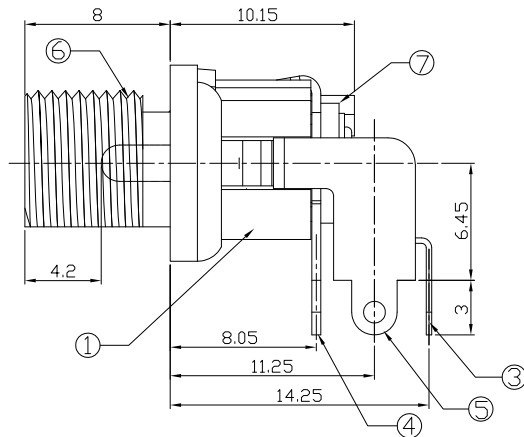
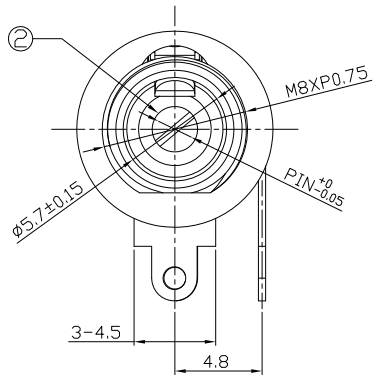
4.Withstand voltage: 500VAC ;

5.Insertion and extraction force: 3-30N;

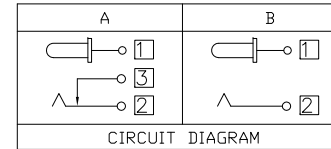
6.life test: 5,000 cycles;

7.Operation temperature range:-20°C~70°C;

8.Preservative temperature range:-40°C~85°C;



RECOMMENDED P.C.B. LAYOUT
UNSPECIFIED TOLERANCE:±0.05
(COPPER-SIDED VIEW)



DC MATE PLUG

| Model No. | H | J |
|------------|------|------|
| CENTER PIN | ∅2.0 | ∅2.5 |

○: ITEM NO. □: TERMINAL NO.

| NO. | PARTS | MATERIAL | Q'TY | FINISHING |
|-----|----------------------|-----------------|------|----------------|
| 9 | Washer-2 | Brass | 1 | Nickel plating |
| 8 | Nut | Brass | 1 | Nickel plating |
| 7 | Washer-1 | Bakelite(PF) | 2 | |
| 6 | Bushing | Brass | 1 | CuSn plating |
| 5 | Shunt Terminal 3 | Phosphor Bronze | 1 | Silver plating |
| 4 | Tip Spring 2 | Phosphor Bronze | 1 | Silver plating |
| 3 | Center pin contact 1 | Brass | 1 | Silver plating |
| 2 | Center pin 1 | Brass | 1 | CuSn plating |
| 1 | Housing | PBT UL94V-0 | 1 | Black |

THESE DRAWINGS AND SPECIFICATIONS ARE THE PROPERTY OF ACCURATE INNOTECH INC AND SHALL NOT BE REPRODUCED, COPIED OR USED IN ANY MANNER WITHOUT THE PRIOR WRITTEN CONSENT OF ACCURATE INNOTECH INC.

| | | | | | | |
|------------|---------|----------|---|-------|------|----------|
| TOLERANCE | ANGLES | UNITS | <p>雅安科技有限公司 ACCURATE INNOTECH INC.</p> <p>TITLE: DIP DC POWER JACK</p> <p>PART NO.: DCB0-0125M</p> <p>DR: Ricky 2019/05/03</p> <p>DWG NO.: AB0-0125M</p> <p>CHKD: Ricky 2019/05/03</p> <p>APPD:</p> | | | |
| .X ±0.38 | X ±5° | mm | | | | |
| .XX ±0.30 | .X ±3° | MAT'L | | | | |
| .XXX ±0.15 | .XX ±2° | SEE NOTE | | | | |
| FINISH | | | SCALE | SHEET | REV. | CUSTOMER |
| SEE NOTE | | | 1:1 | 1/1 | A | DRAWING |
| Q'TY | | | | | | |