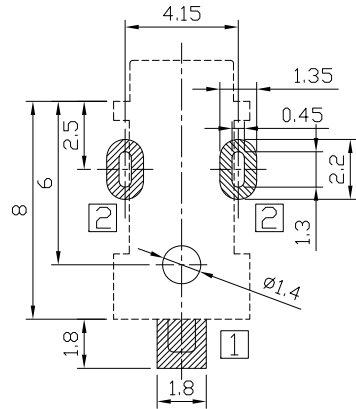
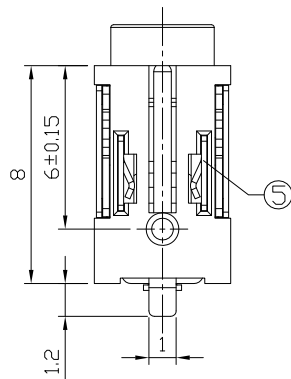
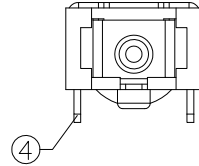
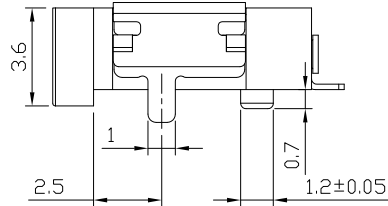
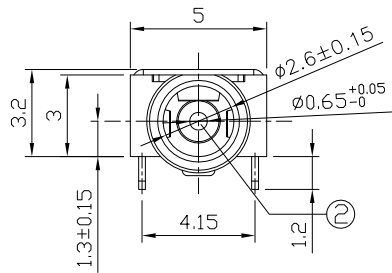
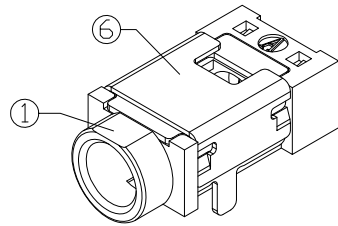
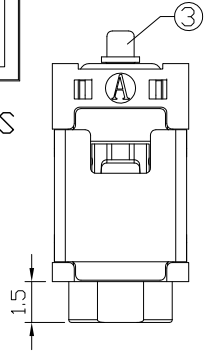




RoHS
Compliant
2002/95/EC

REV.	ECN.	NO.	APPD.

DIMENSIONS



P.C.B Layout
(Top view)

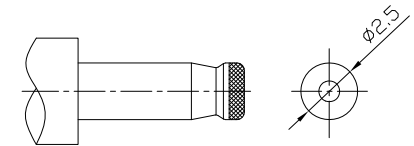
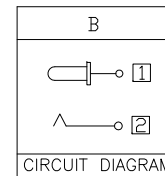
MODEL CODE:

DCB0-01280- B A LC BK S 0 1

- (1):Series type:SMD DC POWER JACK.
- (2):Series No.
- (3):Schematic option: B
- (4):Center pin diameter:
A=Ø0.65
- (5):Material of housing:
LC=LCP(Standard)
- (6):Housing color:
BK=Black
- (7):Terminal plating:
S=Silver(Ag)
- (8):Special option:
0=No special option
- (9):Packing mode:
1=Reel packing

SPECIFICATION

- 1.Rating : DC 6V 2A;
- 2.Contact resistance: ≤30mΩ;
- 3.Insulation resistance: ≥100MΩ (DC500V);
- 4.Withstand voltage: 500VAC ;
- 5.Insertion and extraction force: 3-30N;
- 6.life test: 5,000 cycles;
- 7.Operaton temperature range:-20℃~70℃
- 8.Preservative temperature range:-40℃~85℃



DC MATE PLUG

○: ITEM NO. □: TERMINAL NO.

NO.	PARTS	MATERIAL	Q'TY	FINISHING	TOLERANCE	ANGLES	UNITS
⑥	Shell	Phospor bronze t=0.25	1	Silver plating	±0.3	±2°	mm
⑤	Spring	Stainless steel t=0.2	2				MAT'L
④	Tip spring	Phospor bronze t=0.25	1	Silver plating			SEE NOTE
③	Center pin terminal	Brass t=0.2	1	Silver plating			FINISH
②	Center pin	Brass	1	Silver plating			SEE NOTE
①	Housing	LCP	1				Q'TY

THESE DRAWINGS AND SPECIFICATIONS ARE THE PROPERTY OF ACCURATE INNOTECH INC AND SHALL NOT BE REPRODUCED, COPIED OR USED IN ANY MANNER WITHOUT THE PRIOR WRITTEN CONSENT OF ACCURATE INNOTECH INC.

雅安科技有限公司 ACCURATE INNOTECH INC.			
TITLE: SMD DC POWER JACK		PART NO.: DCB0-01280	
DR: Ricky 2018/06/26		DWG NO.: AB0-01280	
CHKD: Ricky 2018/06/26		SCALE	SHEET
APPD:		1:1	1/1
		REV.	CUSTOMER DRAWING
		A	