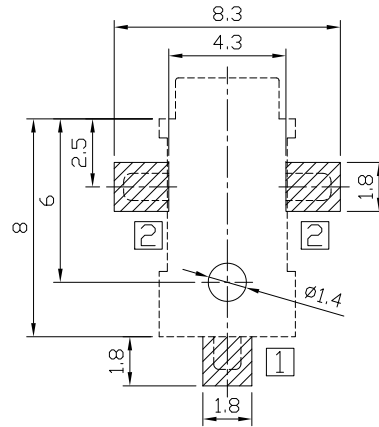
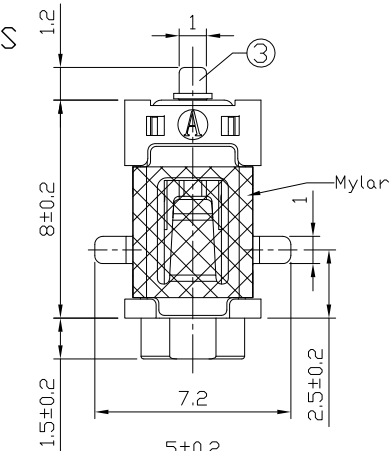




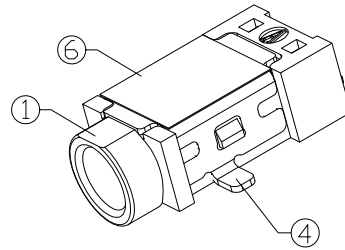
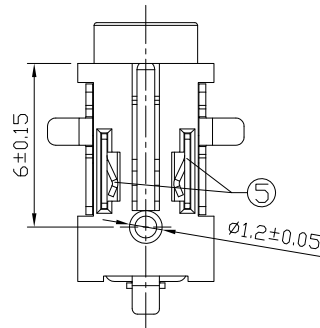
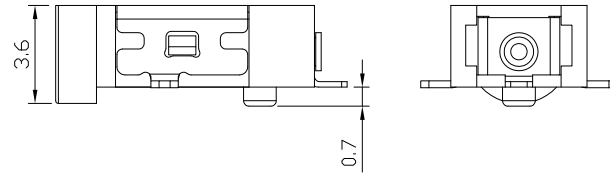
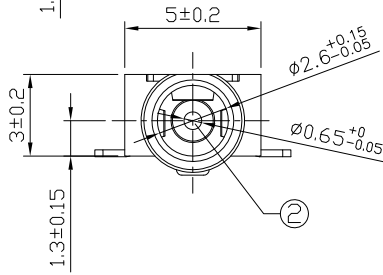
**RoHS  
Compliant**  
2002/95/EC

| REV. | ECN. | NO. | APPD. |
|------|------|-----|-------|
|      |      |     |       |
|      |      |     |       |
|      |      |     |       |

**DIMENSIONS**



RECOMMENDED P.C.B. LAYOUT  
UNSPECIFIED TOLERANCE: ±0.05  
(TOP VIEW)



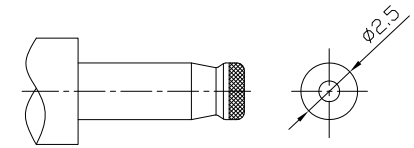
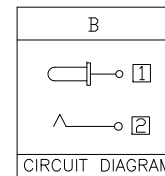
**MODEL CODE:**

DCB0-0128A- B A LC BK S 0 1  
(1) (2) (3)(4) (5) (6)(7)(8) (9)

- (1):Series type:SMD DC POWER JACK.
- (2):Series No.
- (3):Schematic option: B
- (4):Center pin diameter:  
A=Ø0.65
- (5):Material of housing:  
LC=LCP(Standard)
- (6):Housing color:  
BK=Black(Standard)
- (7):Terminal plating:  
S=Silver(Ag)(Standard)
- (8):Special option:  
0=No special option  
M=With Mylar
- (9):Packing mode:  
1=Reel packing

**Specification:**

- 1.Rating : DC 6V 2A.
- 2.Contact resistance: ≤50mΩ  
After test:≤100mΩ
- 3.Insulation resistance: ≥100MΩ (500VDC).  
After test:≥50MΩ
- 4.Withstand voltage: 500VAC.
- 5.Insertion and extraction force: 3N~30N.
- 6.life test: 5000cycles min.
- 7.Operaton temperature range:-20°C~70°C
- 8.Preservative temperature range:-40°C~85°C



DC MATE PLUG

○: ITEM NO. □: TERMINAL NO.

| NO. | PARTS               | MATERIAL               | Q'TY | FINISHING      | TOLERANCE | ANGLES | UNITS mm |
|-----|---------------------|------------------------|------|----------------|-----------|--------|----------|
| ⑥   | Mylar               | Polyimide 0.05t        | 1    |                |           |        |          |
| ⑤   | Spring              | Stainless steel t=0.2  | 2    |                | ±0.3      | ±2°    | MAT'L    |
| ④   | Tip spring          | Phosphor bronze t=0.25 | 1    | Silver plating |           |        | SEE NOTE |
| ③   | Center pin terminal | Brass t=0.2            | 1    | Silver plating |           |        | FINISH   |
| ②   | Center pin          | Brass                  | 1    | Silver plating |           |        | SEE NOTE |
| ①   | Housing             | LCP UL 94V-0           | 1    | Black          |           |        | Q'TY     |

THESE DRAWINGS AND SPECIFICATIONS ARE THE PROPERTY OF ACCURATE INNOTECH INC AND SHALL NOT BE REPRODUCED, COPIED OR USED IN ANY MANNER WITHOUT THE PRIOR WRITTEN CONSENT OF ACCURATE INNOTECH INC.

|  |  |                         |                  |
|--|--|-------------------------|------------------|
| <b>雅安科技有限公司</b><br><b>ACCURATE INNOTECH INC.</b> |  |                         |                  |
| TITLE:<br>SMD DC POWER JACK                      |  | PART NO.:<br>DCB0-0128A |                  |
| DR: <i>Ricky</i> 2018/06/26                      |  | DWG NO.:<br>AB0-0128A   |                  |
| CHKD: <i>Ricky</i> 2018/06/26                    |  | SCALE                   | SHEET            |
| APPD:  |  | 1:1                     | 1/1              |
|  |  | REV.                    | CUSTOMER DRAWING |
|  |  | A                       |                  |