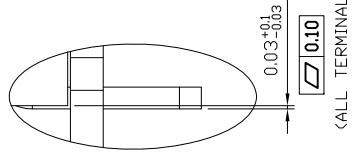




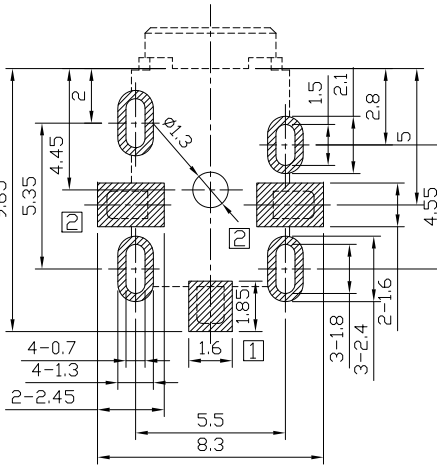
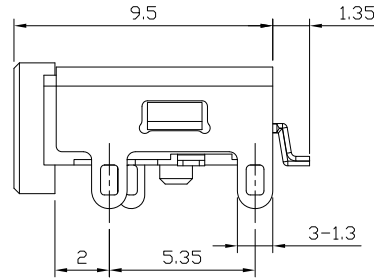
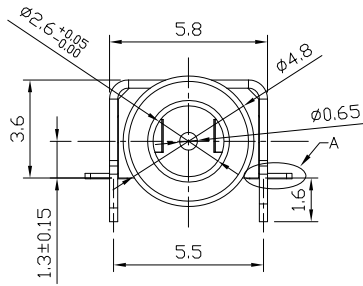
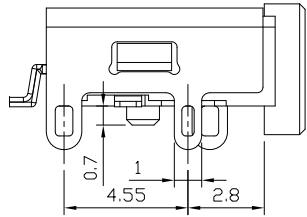
RoHS  
Compliant  
2002/95/EC  
Process  
Capable

REV.	ECN.	NO.	APPD.

DIMENSIONS



VIEW A  
SCALE 4:1



P.C.B Layout  
(Top view)

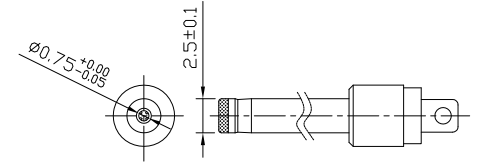
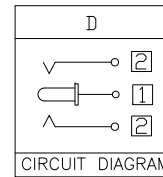
MODEL CODE:

DCB0-01310- D A LC BK S 0 1

- (1):Series type:SMD DC POWER JACK.
- (2):Series No.
- (3):Schematic option: D
- (4):Center pin diameter:  
A=Ø0.65
- (5):Material of housing:  
LC=LCP(Standard)
- (6):Housing color:  
BK=Black
- (7):Terminal plating:  
S=Silver(Ag)
- (8):Special option:  
0=No special option
- (9):Packing mode:  
1=Reel packing

SPECIFICATION

- 1.Rating : DC 12V 2A;
- 2.Contact resistance: ≤30mΩ;
- 3.Insulation resistance: ≥100MΩ (DC250V);
- 4.Withstand voltage: 500VAC ;
- 5.Insertion and extraction force: 3-30N;
- 6.life test: 5,000 cycles.
- 7.Operaton temperature range:-20℃~70℃
- 8.Preservative temperature range:-40℃~85℃



DC MATE PLUG

○: ITEM NO. □: TERMINAL NO.

NO.	PARTS	MATERIAL	Q'TY	FINISHING	TOLERANCE	ANGLES	UNITS mm	雅安科技有限公司 ACCURATE INNOTECH INC.			
⑤	Shell	Brass t=0.3	1	Nickel plating	±0.3	±2'	MAT'L	TITLE: SMD DC POWER JACK		PART NO.: DCB0-01310	
④	Tip spring II	Phosphor bronze t=0.2	1	Silver plating			SEE NOTE	DR: Ricky 2018/06/26		DWG NO.: AB0-01310	
③	Tip spring I	Phosphor bronze t=0.2	1	Silver plating			SEE NOTE	CHKD: Ricky 2018/06/26		SCALE SHEET REV. CUSTOMER 1:1 1/1 A DRAWING	
②	Center pin	Brass	1	Silver plating			Q'TY	APPD:			
①	Housing	LCP UL94V-0	1								

THESE DRAWINGS AND SPECIFICATIONS ARE THE PROPERTY OF ACCURATE INNOTECH INC AND SHALL NOT BE REPRODUCED, COPIED OR USED IN ANY MANNER WITHOUT THE PRIOR WRITTEN CONSENT OF ACCURATE INNOTECH INC.